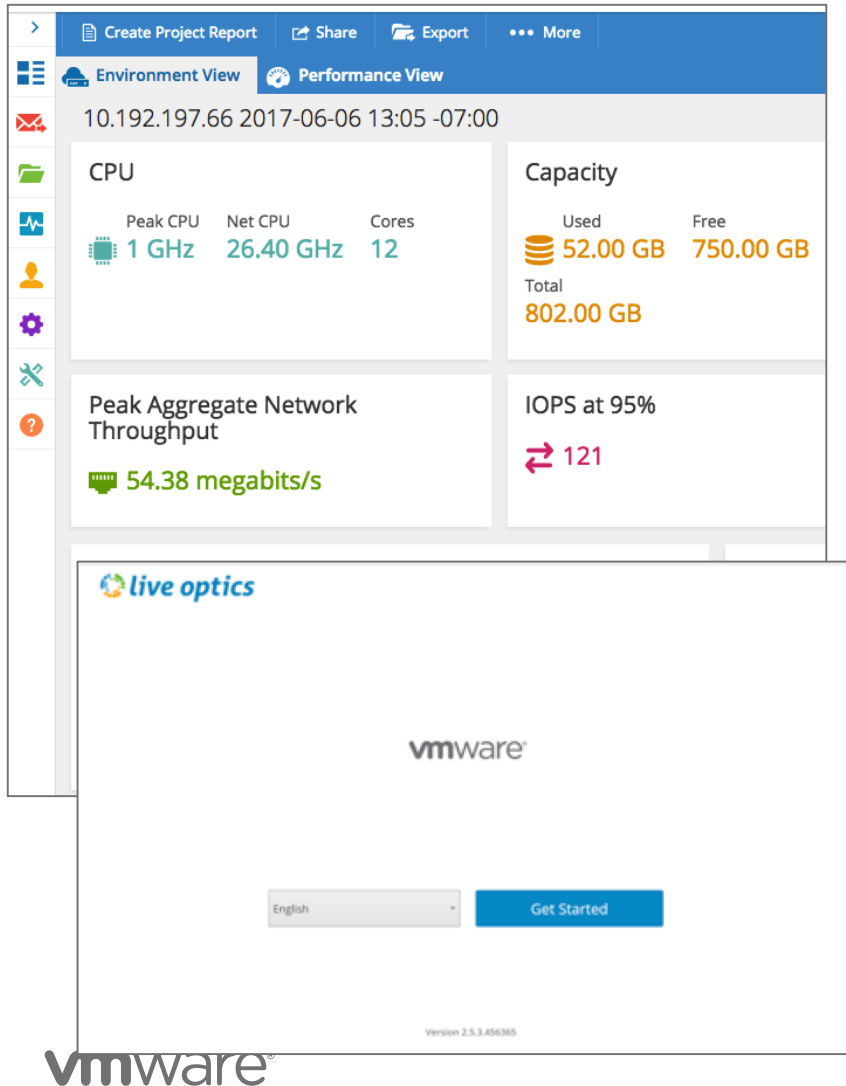


Introducing New VMware HCI Assessment

Introducing New VMware HCI Assessment



1. **VMware HCI Assessment** is powered by industry leading **Live Optics** (formerly DPACK), a tool widely adopted among the SE community and in use across all GEOs and Verticals
2. **Data Zoning:** Data of all users of the VMware HCI Assessment will be restricted and limited to VMware ONLY and can therefore be run on ANY OEM platform
3. **Quick, Simple & Free** - Get results in 24-48 hours
4. **Graphically Presents Metrics for HCI (compute + storage)**
5. **Works on vSphere, Hyper-V and Physical Environments:** Opens up new markets as it allows assessment of non-ESXi environments
6. **Ability to Integrate with vSAN Sizer (Future)**

How it Works



1. Invite your customers
2. Automate the sales “Discovery”
Live Optics Profiling Software
3. Let your customers collect “self service” data proactively

Live Optics Analytics Portal Analyze, Visualize & Collaborate

Easily understand complex or unknown requirements of your customer’s project.

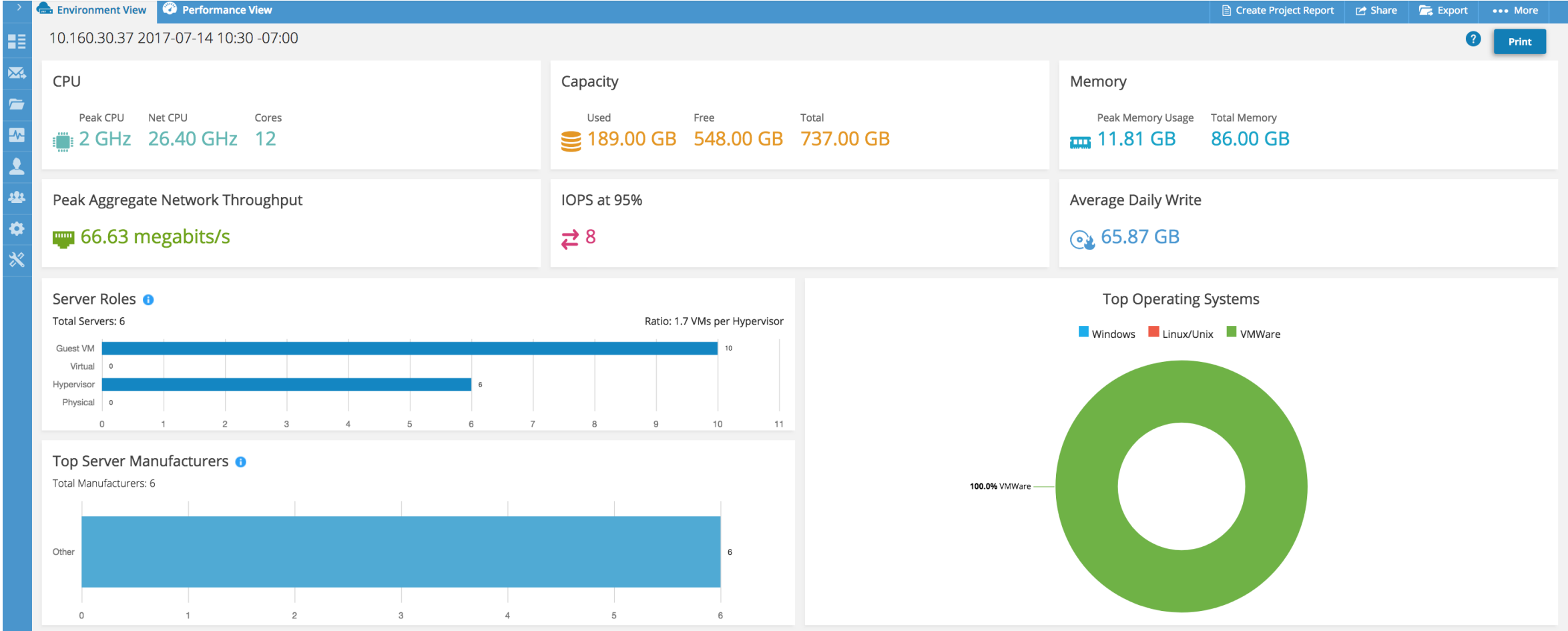
- Hardware
- Software
- Performance
- Capacity

Export Data to PPT, decision making tools, or *share* with others involved in creating the solution.

- PPT
- XLS
- API
- ROI/TCO Calculators
- Sizing Tools
- Publish for public view

Sample Output – Environment View

To Translate Live Optics output into the vSAN Sizer, please refer to [Partner Central](#)



Appendix 1 - Information Collected

- Server Names (can be masked by the user)
- Server Operating System
 - Publisher, Version, and Patch level
- Physical Disk drive name or number
- Logical Drive names (letters) mounted on Physical disks
- Capacity of Physical Disks
- Capacity Used on Physical Disks
- Capacity Free on Physical Disks
- Physical Disk Block Size
- Total Memory
- Total Memory Used
- Total Memory Free
- Hard page faults
- Top Running Processes (non-vm servers only)
 - Process name (executable name)
 - CPU usage
 - Private memory usage
 - Page Faults
 - Disk Read MBs
 - Disk Write MBs
- Server CPU Description
- Server CPU Usage Rates
- Saturated Core Count
- Read IOPS**
- Write IOPS**
- Read KB/sec**
- Write KB/sec**
- Avg. Read Size**
- Avg. Write Size**
- Read Latency**
- Write Latency**
- Queue Depth**
- VMware Virtual Memory Settings
- Number of 10 Gb, 1 Gb, and 100 Mb Ethernet ports
- Link speed of ports
- Network port throughput
- List of installed applications
- VM Info
 - Guest VM name, OS, vCPUs, vMemory, vDisk Capacity Used/Free, running state
- Flag if the server is virtual or physical
- Flag if the server is hosting virtual machines
- ** Tracked per Physical Disk