



Altiris® 6

Deployment Solution™

.....
 REDUCE THE TIME AND COST OF DEPLOYING AND MANAGING IT DEVICES

BENEFITS

- > Single deployment solution for desktops, servers, and notebooks
- > Supports Intel's Wired for Management specifications for PXE, Wake on LAN, and BIS
- > Secures management features from unauthorized personnel
- > Supports Windows PE and Linux pre-boot environments
- > Provides tools for hands-free migration, which increases return on investment
- > Supports heterogeneous operating systems, including Windows and Linux

Altiris® Deployment Solution™ helps reduce the cost of deploying and managing servers, desktops, notebooks, and thin clients from a centralized location in your environment with an easy-to-use, automated solution that offers OS deployment, configuration, PC “personality” migration, and software deployment across hardware platforms and OS types, including Microsoft Windows Vista and Windows Server 2008.

HANDS-OFF DESKTOP AND SERVER DEPLOYMENT

Deployment Solution makes it easy to deploy your desktops and servers. For example, you can build a reference system using Altiris' unattended OS installation wizard. Once your reference system has been built with your standard OS and applications, you can mass-deploy an image of the reference system to your new and existing systems. Because every system is unique, you can assign security IDs (SIDs) and configure user names, IP addresses, and other network settings. In addition to supporting a wide variety of hardware types, Deployment Solution also supports multiple operating systems, including Windows, Linux, and Solaris. Deploying servers, desktops, notebooks, and thin clients has never been easier.

EASY-TO-USE MANAGEMENT CONSOLE

With Deployment Solution, you don't have to leave your desk to manage your systems. Use Deployment Solution's wizards to help you build events to perform common computer management tasks—simply drag an event onto a computer or group of computers, and then run it immediately or schedule it for after-hours. It's that easy. The console includes improved image and event replication; support for adding, modifying, and deleting computers, jobs, and tasks; and support for managing virtual computers. It's also easy to restrict access to the console functions and managed systems with Altiris' role-and-scope-based security, so authorized staff can access and manage appropriate systems. A Web console option is also available for best integration with the Altiris management platform and solutions.

SIMPLIFIED SOFTWARE MANAGEMENT

OS deployment is only part of the battle. Once a computer or server is provisioned, you also need

to deploy drivers and software updates.

Deployment Solution allows you to easily install and configure department-specific software, and migrate user-specific data and settings to new computers. The solution makes it faster and easier than ever to deploy, configure, and upgrade software on managed devices.

MIGRATE DATA AND SETTINGS

Migrating data and settings from an old computer to a new one has always been a frustrating task. Deployment Solution simplifies the migration process by offering industry-leading migration technology that guides you as you capture desktop, network, and application settings, along with user data. The solution then packages the data in a self-extracting file for easy redeployment on a new computer or operating system.

QUICK RESPONSE TO HELP DESK REQUESTS

Frantic help desk calls are an unavoidable part of running a network. Use Deployment Solution to remotely browse, diagnose, and repair problems on systems—without ever leaving your desk. Detailed computer properties, along with remote control and chat, help simplify remote diagnosis of common problems. In addition, if a system crashes, you can quickly restore the device system to an operational state using images and software distribution tasks.

POWERFUL TASK MANAGEMENT

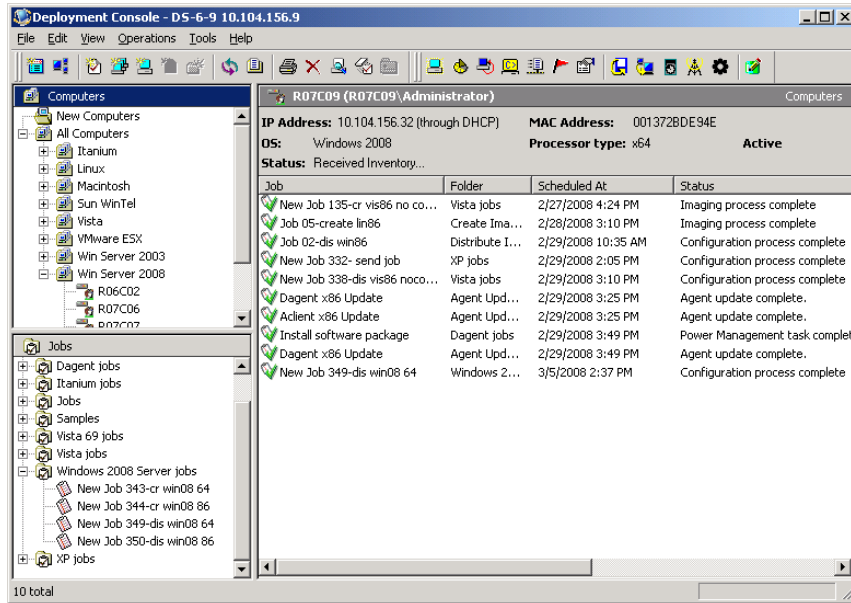
Deployment Solution enables power users to perform advanced automation and customized scripting. Whether it's support for server-side scripting or conditional error handling, Deployment Solution provides unparalleled job and task management.

"We used to go to each end user's station to update software. What used to take four hours and 15 people now requires just a click of the mouse. Now we don't even have to stay up late to do software upgrades."

—TONY BURDICK
Partner
William Blair & Co.
Investment Bank

"Deployment time for new computers has been reduced from about half a day to under one hour with Altiris Deployment Solution."

—PAUL JOSEPH
IT Manager
RSM Bird Cameron
(One of the largest accounting and business advisory firms in Australia)



Deployment Solution 6.9 adds support for Windows Server 2008 to its already comprehensive platform support.



SYSTEM REQUIREMENTS

Deployment Solution Minimum Requirements

- > Processor—Pentium III 800 MHz or faster
- > Memory—1 GB RAM
- > Hard drive—20 GB
- > Operating system—Windows Server 2003 SP1, Windows 2000 Server SP4 or later
- > Database—Microsoft SQL Server 2000 SP3 or SQL Server 2005
- > Browser—Microsoft Internet Explorer 6 SP1 or later

Altiris Agent Minimum Requirements

- > Operating system—Windows 95 or later
- > Available disk space—5 MB disk space for Altiris Agent, plus space to install required software
- > Memory—128 MB RAM; 384 MB RAM minimum if using Windows PE
- > Browser—Microsoft Internet Explorer 6 or later

**TRY DEPLOYMENT
SOLUTION FREE
FOR 30 DAYS!**

Download a free 30-day evaluation version of Deployment Solution at www.altiris.com/eval.