

# Litigation Management creates strong foundation for disaster recovery, virtualization and storage growth with HP LeftHand SANs



Litigation Management, Inc.  
SERIOUS MEDICINE FOR THE DEFENSE

“We concluded that HP LeftHand SANs offer the best mix of cost, performance, versatility and management. The ease of management of the HP LeftHand SANs let us grow from a few terabytes to more than 60 TB of live storage – without an increase in administration costs.”

– Bryan McMullan, Infrastructure Manager, Litigation Management, Inc.

**Industry:** Litigation support services

**Solution:** HP LeftHand SANs

## Objective:

Scalable, reliable storage to support rapid growth of storage demand and critical disaster recovery requirements

## Approach:

HP LeftHand SAN for increased capacity and HP SAN/iQ Software features – including Snapshots and Remote Copy – for disaster recovery

## Business technology improvements:

- Increased storage capacity
- Robust disaster recovery capabilities
- Nearly instantaneous data restore capability
- Storage support for server virtualization strategy

## Business outcomes:

- Support for rapid organization growth
- Highest level of availability of critical litigation data for clients
- Enhanced disaster recovery capability for sensitive litigation data
- Reduced administrative overhead cost

## Rapid growth provides case for new storage strategy

Litigation Management, Inc. (LMI) provides analyses of medical information for the defense of claims or class action lawsuits that center on health, illness or injury. LMI’s medical, legal and healthcare industry professionals distill large volumes of difficult-to-decipher medical records into clear and concise analyses – all within the rigid HIPAA regulations. As a result, LMI’s clients spend time developing strategies, not searching for data.

Rapid growth of the organization created the need for a higher-capacity, more efficient and reliable storage system to hold sensitive information. LMI was using direct attached storage and local storage to support their servers. As the company continued to grow, they purchased the HP LeftHand SAN Solution. “We were growing at such a rapid pace that storage needs were increasing almost faster than we could accommodate with local storage,” says LMI’s Infrastructure Manager Bryan McMullan.

## Adding capacity while simplifying storage management

Initially, LMI purchased 20 TB of storage, which has since grown to 60+ TB – all on HP ProLiant DL320s and DL185 G5 Storage Servers. “With HP LeftHand SANs, now we are utilizing our storage in a way that would have been unheard of a couple of years ago,” says McMullan, “and it requires very little administration on our part.” The HP LeftHand SANs Centralized Management Console required little to no training, and McMullan’s staff mastered it quickly.

“The HP SAN/iQ Software makes our life easier because we have not had to add staff to manage growth,” says McMullan. “The ease of management of the HP LeftHand SANs helped us grow from a few terabytes to more than 60 TB of live storage – without an increase in administration costs. The HP SAN/iQ Software lets us see and manage all the storage from a central point.”

LMI runs all its Microsoft® SQL Servers on HP LeftHand SANs. Coupling these two powerful technologies helped LMI meet their current needs – while providing a secure and stable platform for future growth. “I can’t emphasize enough the great security and stability of SQL on the HP LeftHand SANs,” says McMullan.

## Customer solution at a glance

HP LeftHand SANs and HP SAN/iQ Software

### Primary applications

- Litigation support
- Disaster recovery

### Primary hardware

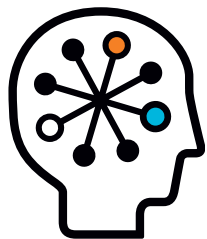
- HP LeftHand SANs on 30 HP ProLiant DL320s Storage Servers and one HP ProLiant DL185 G5 Storage Server

### Primary software

- HP SAN/iQ Software
- Microsoft Windows® Server 2003 and 2008
- Microsoft SQL Server 2000, 2005, and 2008
- VMware Virtual Infrastructure 3.5

### Why HP?

- Combination of cost, performance, versatility and ease of management
- Disaster recovery features and functionality
- Scalable storage solution essential to support server virtualization



### More robust disaster recovery

While raw storage capacity was the initial driver for LMI's SAN implementation, LMI also wanted to implement a robust disaster recovery strategy that would leverage the HP LeftHand SAN Solution's capabilities beyond pure storage. McMullan and his team began experimenting with snapshots and remote copies to other facilities, and immediately began to appreciate the enhanced storage functionality.

LMI has employees across the country and multiple locations – including its headquarters in Cleveland, Ohio, and a disaster recovery site in Pittsburgh, Pennsylvania. Previously, lost data had to be restored from tape, which meant up to a day of downtime. In a business where timing is critical, and sensitive data needs to be available on demand for clients, this was unacceptable.

Now, LMI uses the Remote Copy and Snapshots features of the HP SAN/iQ Software to ensure that data is copied to the disaster recovery site daily – and can be retrieved instantaneously. "In litigation, minutes count," says McMullan. "If you don't have the right information at the right minute, it can wreak havoc on a case that is in deposition or trial."

### Foundation for virtualization

McMullan is a self-proclaimed virtualization evangelist; once LMI's growth issues were addressed, he started working towards more virtualization. "We've already virtualized a significant piece of our computing infrastructure, and now we want to see how much more we can virtualize on HP LeftHand SANs. We have virtualized 50+ servers on VMware; it's a core component of our technology infrastructure. We leverage it every day."

HP storage is an essential part of LMI's virtualization strategy. "With our commitment to leverage virtualization," explains McMullan, "the HP LeftHand SAN Solution is a requirement. While VMware helps save money on server hardware, those savings need to be invested in a robust storage platform. With VMware, you need storage you can count on –

storage that isn't going to go down, and storage that meets performance benchmarks. Storage becomes the critical component that must be managed very well, and HP LeftHand SANs let us do that. In fact, the HP LeftHand SAN Solution is perfect for virtual IT environments"

### Sticking with HP solution

When LMI made the decision to upgrade their storage system, they had already implemented an HP LeftHand SAN. However, they approached their search for a vendor as though they were starting from scratch and evaluated a number of alternatives. "While we had deep experience with our HP LeftHand SAN," says McMullan, "we still wanted to approach the project as a blank slate. So we evaluated many of the players in the iSCSI and FC (Fibre Channel) storage space. When our analysis was complete, we concluded that HP LeftHand SANs offer the best mix of cost, performance, versatility and management."

Good vendor communication is a critical factor for LMI. "For example," says McMullan, "when the HP ProLiant DL320 Storage Servers were coming out, we were briefed in advance. The HP hardware came and worked the way it was supposed to – we never felt like a test bed. It's a comforting feeling knowing that we have a highly reliable vendor."

### About Litigation Management, Inc.

Since 1984, Litigation Management Inc., ([www.medicineforthedefense.com](http://www.medicineforthedefense.com)) has provided comprehensive analyses of medical information for the defense of claims, individual lawsuits, mass torts or class actions where health, illness or injury is an issue. LMI's staff of medical and legal specialists, supported by advanced technologies, distills medical record data, deciphers the records and delivers customized work products and services that help clients achieve favorable results.

## Technology for better business outcomes

For more information, go to [www.hp.com/go/storage](http://www.hp.com/go/storage)

For more HP StorageWorks customer stories, go to [www.hp.com/go/storage/casestudies](http://www.hp.com/go/storage/casestudies)

© Copyright 2009 Hewlett-Packard Development Company, L.P. The information contained herein is subject to change without notice. The only warranties for HP products and services are set forth in the express warranty statements accompanying such products and services. Nothing herein should be construed as constituting an additional warranty. HP shall not be liable for technical or editorial errors or omissions contained herein. This customer's results depended upon its unique business and technology environment, the way it used HP products and services, and other factors. These results may not be typical; your results may vary. Microsoft is an HP supplier as well as an HP customer.

Microsoft and Windows are trademarks of Microsoft Corporation. Other trademarks are the property of their respective owners.

4AA2-5064ENW, April 2009

