



Sennheiser Business Solutions

# ADAPT Headset Solutions

SENNHEISER



## Work your way

Modern workplaces are evolving every day – becoming more mobile, more versatile and more flexible. We created the ADAPT Line of premium audio tools to enable seamless transition between locations, enabling perfect concentration and collaboration, anytime and anywhere.

If you need an audio solution that can adapt quickly to changing and energetic situations, the ADAPT Line is designed and crafted to match your team's needs. Whether in the office, open workspaces, at home or on the go, every model in the series offers best-in-class audio quality and can adapt to any situation.

For professionals who want a headset that can take them beyond business calls, the series offers users excellent versatility in a variety of contemporary designs. From wireless functionalities and Active Noise Cancellation to optimized music experiences, the ADAPT Line gives you the tools to take your business further.



# ADAPT Headset Solutions



**MB 660 Series**  
Wireless Bluetooth®



**MB 360 Series**  
Wireless Bluetooth®



**PRESENCE™ Series**  
Wireless Bluetooth®

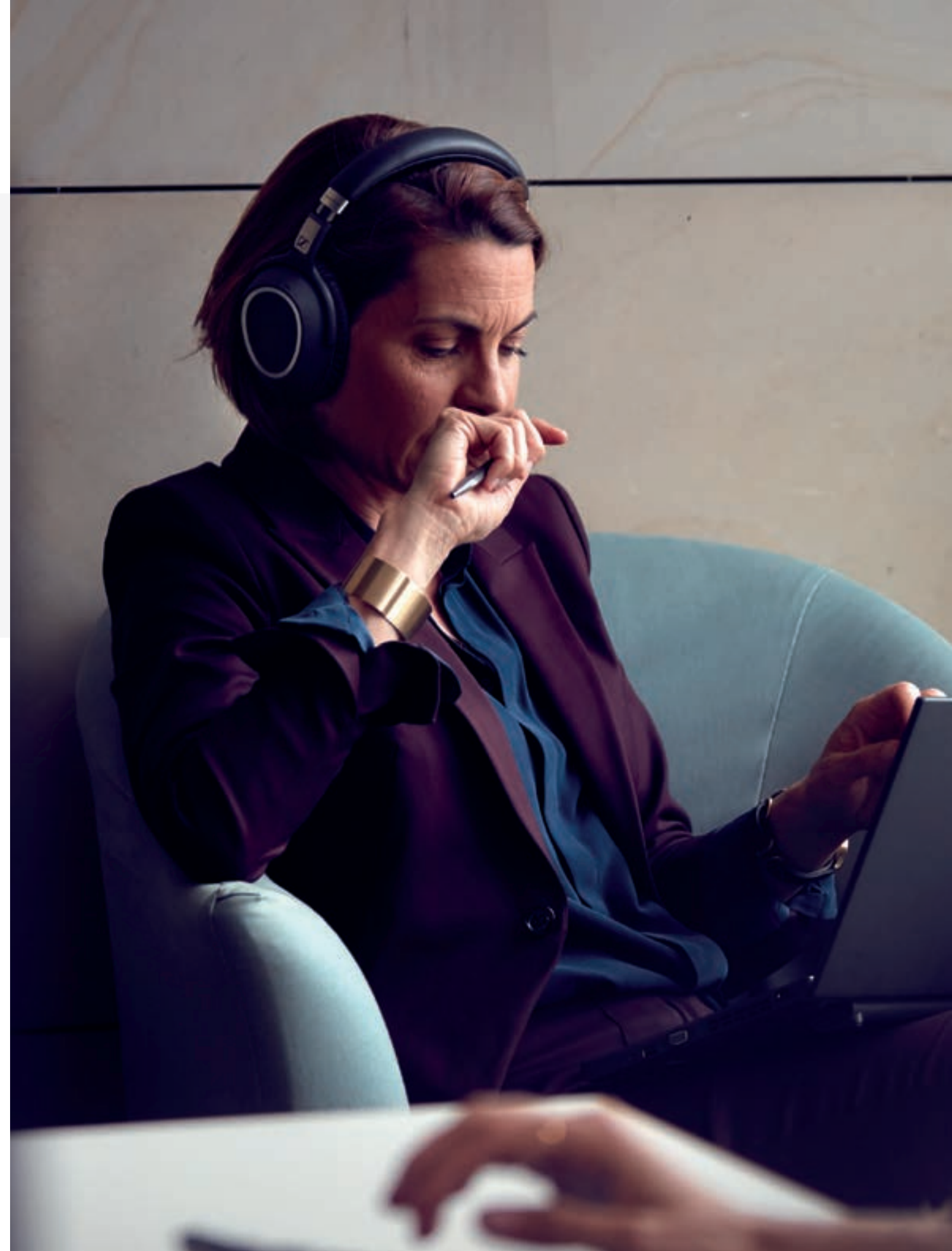


**SC 100 Series** NEW  
Wired headsets

## Take perfect audio anywhere.

Wherever your business takes you, the ADAPT Line is made to match your style, with contemporary ergonomic designs that fit today's flexible professional environment. Anywhere, anytime, it's possible to enhance concentration with headsets that provide truly impressive noise cancellation, enabling your team to stay focused on the task at hand.

In the office or on-the-go, the ADAPT Line gives you a range of best-in-class portable solutions, enabling your team to work flexibly with wireless functionality and hassle-free device compatibility. State-of-the-art voice pickup technology enhances speech and eliminates unwanted background noise, in any environment. Not only that, exceptional microphone clarity delivers an excellent audio experience for both speaker and listener.



# ADAPT Facts

We found that **25%\*** of professionals spend more than half of their day away from their desk. Which to us means: flexibility is not just a priority, it's a necessity.

With on-the-move workers in mind, **40%\*** of whom need to be able talk and walk, this unique series of devices was created to enable seamless transitions between desk, to car, to home and wherever else comes in between.

It's a fact that **58%\*** of these professionals regularly participate in conference calls. That's why the ADAPT Line ensures perfect collaboration, anytime and anywhere.

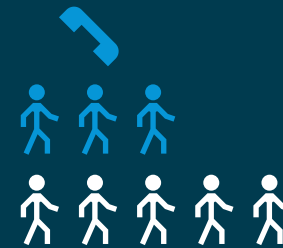
# 25%

Work away from desk



# 40%

Needs to be able to talk and walk



# 58%

Participate in conference calls



\* Sennheiser report: "Work your way 2019. Insights and perspectives on the evolution of work".



## MB 660 Series

We haven't compromised on a single detail with the MB 660 Series. We have designed it to be the ultimate professional business communication tool for maximizing your productivity in even the noisiest environments.

As well as delivering a UC certified communication experience and the renowned Sennheiser high-quality stereo sound for music and multimedia enjoyment, the MB 660 also takes Active Noise Cancellation to the next level. It is the first professional adaptive ANC headset, which constantly monitors the background environment for noise and adjusts the level of noise reduction in your headset. By reducing distracting background noise, you can revitalize your open office, increase concentration, improve well-being and boost productivity. An ideal headset for demanding business communication and a disruption free workspace.

### Regain concentration anytime, anywhere

Adaptive ANC monitors background noise and adjusts the level of noise reduction in the headset to your personal preference

### Experience superior sound to increase focus

Renowned Sennheiser stereo sound and personalized audio profile means you can enjoy high-quality music and focus on working

### Ensure clear, certified business calls

With innovative noise-filtering technologies, combined with optimization for UC and Certified for Skype for Business



### Stay connected to your favorite devices

With multi-point connectivity to two Bluetooth® devices and up to 30\* hours of battery time

### Discover portable user-friendly design

Turn the ear cups to switch on or off, fold flat on-the-go and enjoy full control with a simple swipe of the touch pad

See more at

[www.sennheiser.com/mb660](http://www.sennheiser.com/mb660)



### ADDITIONAL BENEFITS & FEATURES

- **Tap-to-pair** – with the built-in NFC\*\* function. Just tap your phone for instantly pairing
- **Simple swipes and taps** – touch pad for call and media control
- **Convenient charging** – with USB cable with micro-USB connector or by using the headset with a wired connection
- **Multiple connection options** – adapters and cables included for wireless, wired and in-flight connectivity
- **Effective noise damping** – with large pillow-soft leatherette ear pads for all-day wearing
- **Personalized audio settings** – with sound effect modes: Club, Movie, Speech (preset), Director (default)
- **High quality streaming** – CD-quality streaming with aptX®



\* Up to 30 hours when connecting the headset via cable and engaging noise cancellation. Around 20 hours with ANC and Bluetooth® enabled. The exact operating time is influenced by factors such as the audio and background noise volume.

\*\* Device dependent



# CapTune

YOUR MUSIC. YOUR WAY.



#### Call and media controls direct from the touch pad

Answer/end call, reject, hold, mute/unmute, redial. Play/pause music, change track, volume up or down.



#### Sound effect modes and adaptive ANC controls

Create your own audio profile to get the best personalized sound for speech, music and entertainment with sound effect modes. Personalize your own level of noise cancellation.



#### Bluetooth® pairing and control

Instant flight mode (just plug in the audio jack). Bluetooth® on/off. NFC pairing.

## Comparison Overview

### MB 660 Series



MB 660 UC MS

|                                          |        |
|------------------------------------------|--------|
| <b>Art. No.</b>                          | 507093 |
| <b>Wearing style</b>                     |        |
| Double-sided headset                     | •      |
| Headband                                 | •      |
| Over-the-ear                             | •      |
| Large pillow-soft leatherette ear pads   | •      |
| <b>Connectivity</b>                      |        |
| Softphone/PC                             | •      |
| Mobile phone                             | •      |
| Tablet                                   | •      |
| Multi device connectivity*               | •      |
| <b>Microphone</b>                        |        |
| 3 digital noise-cancelling microphones   | •      |
| <b>Features &amp; Technologies</b>       |        |
| Adaptive Active Noise Cancellation (ANC) | •      |
| ActiveGard® Technology                   | •      |
| SpeakFocus™ Technology                   | •      |
| WindSafe™ Technology                     | •      |
| Room Experience™ Technology              | •      |
| Advanced Own-Voice-Detector              | •      |
| TalkThrough                              | •      |
| Multimedia and music listening           | •      |
| Carry case                               | •      |
| <b>Unified Communications</b>            |        |
| Optimized for UC                         | •      |
| Skype for Business Certified             | •      |

\*Connects up to two devices at the same time





# MB 360 Series

Designed for today's style conscious office workers on the move, who prefer to use a single headset for both calls and entertainment – without compromising on business performance or audio quality.



MB 360 UC is a double-sided, Bluetooth® headset with Active Noise Cancellation that reduces background noise to increase work focus. ANC creates a disruption free workspace for maximum concentration in noisy environments and provides a more relaxed commute. An over-the-ear design and ergonomical ear pads add noise damping and long-lasting comfort for the most extended of listening sessions. Combines refined Sennheiser music quality with UC productivity in a sleek design for the flexibility demanded by contemporary office workers.

#### Concentrate in noisy environments

Thanks to Active Noise Cancellation (ANC)

#### Stay comfortable with soft ear pads

Even after hours of wearing

#### Increase productivity

With UC optimization (using the included USB dongle)

#### Looks good

Both inside the office and on-the-go with sleek, minimal look

#### Power your life with music

Add refined Sennheiser sound to your everyday routine

See more at

[www.sennheiser.com/mb360](http://www.sennheiser.com/mb360)

#### ADDITIONAL BENEFITS & FEATURES

- **Reduce distracting noise** – excellent damping from large ear cups
- **Neatly stowable** – due to a robust, foldable headband design
- **Protect your headset** – included storage pouch
- **Flexible connectivity** – options of softphone/PC or mobile device (single-device connectivity)
- **Easy charging** – via USB cable

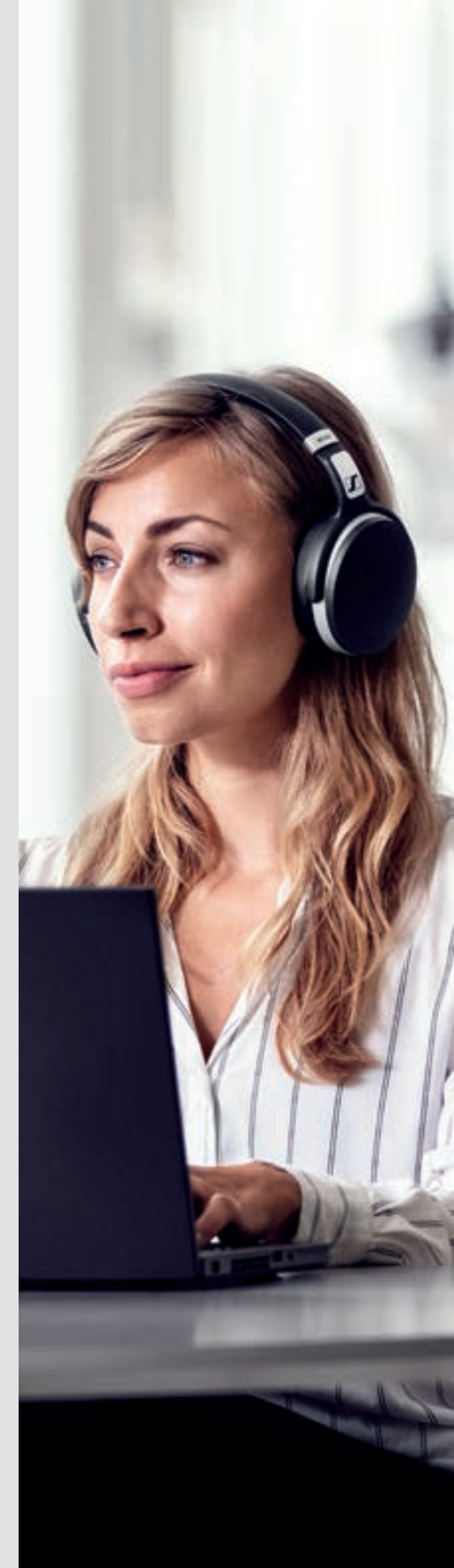
## Comparison Overview

### MB 360 Series



MB 360 UC

|                                    |        |
|------------------------------------|--------|
| <b>Art. No.</b>                    | 508362 |
| <b>Wearing style</b>               |        |
| Double-sided headset               | •      |
| Headband                           | •      |
| Over-the-ear                       | •      |
| Large thick leatherette ear pads   | •      |
| <b>Connectivity</b>                |        |
| Softphone/PC                       | •      |
| Mobile phone                       | •      |
| Tablet                             | •      |
| <b>Microphone</b>                  |        |
| Dual noise-cancelling microphone   | •      |
| <b>Features &amp; Technologies</b> |        |
| Active Noise Cancellation (ANC)    | •      |
| ActiveGard® Technology             | •      |
| Multimedia and music listening     | •      |
| USB dongle                         | •      |
| Storage pouch                      | •      |
| <b>Unified Communications</b>      |        |
| Optimized for UC                   | •      |
| Skype for Business Certified       |        |



# PRESENCE™ Series

With Sennheiser PRESENCE™ you get the best of both worlds: You get the benefit of superb sound and your listener gets to hear you clearly – no matter where you're calling from.

PRESENCE™ intelligently adapts to different environments with its 3-digital noise-cancelling microphones that work seamlessly together with Sennheiser's advanced Own-Voice-Detector, SpeakFocus™ and WindSafe™ technologies to ensure crystal clear audio wherever. From a noisy office, through a windy car-park to your car, PRESENCE™ takes background noise in its stride and adapts seamlessly to give the consistent listening experience that professional communication demands.

### Hear and be hard. Wherever.

Best in class 3-digital noise-cancelling microphones and noise filtering technologies.

### Longest talk time

Up to 10 hours' narrowband and 8 hours' wideband call time between charges.

### Call handling made easy

Intuitive on/off and answer/end function with sliding microphone boom arm.

### Increased comfort

A flexible choice of wearing styles and optional headband.

### Voice controlled

Tap into Siri and Google Assistant and be online at the touch of a button.

See more at

[www.sennheiser.com/presence](http://www.sennheiser.com/presence)



### ADDITIONAL BENEFITS & FEATURES

- **Convenient storage** – carry case for headset, dongle and USB charging cable
- **Multi-connectivity** – seamlessly switch between PC/softphone and mobile calls
- **Increased range** – up to 25 meters depending on device and environment
- **Lightweight iconic design** – looks as good as it sounds

## Comparison Overview

### PRESENCE™ Series



PRESENCE™ Grey UC



PRESENCE™ Grey BUSINESS

| Art. No.                               | 508342 | 508341 |
|----------------------------------------|--------|--------|
| <b>Wearing style</b>                   |        |        |
| Single-sided headset                   | ●      | ●      |
| Ear hook or ear sleeve                 | ●      | ●      |
| Headband                               | [●]    | [●]    |
| <b>Connectivity</b>                    |        |        |
| Softphone/PC                           | ●      |        |
| Mobile phone                           | ●      | ●      |
| Tablet                                 | ●      | ●      |
| Multi device connectivity*             | ●      | ●      |
| <b>Microphone</b>                      |        |        |
| 3 digital noise-cancelling microphones | ●      | ●      |
| <b>Features &amp; Technologies</b>     |        |        |
| Advanced Own-Voice-Detector            | ●      | ●      |
| SpeakFocus™ Technology                 | ●      | ●      |
| WindSafe™ Technology                   | ●      | ●      |
| ActiveGard® Technology                 | ●      | ●      |
| USB dongle                             | ●      | [●]    |
| Carry case                             | ●      |        |
| Charger stand                          | [●]    | [●]    |
| <b>Unified Communications</b>          |        |        |
| Optimized for UC                       | ●      |        |
| Skype for Business Certified           | ●      |        |

[●] Available as optional accessories. PRESENCE™ headband (Art. no. 506476), CH 20 MB headset charger stand ( Art. no. 506039)

\*Connects up to two devices at the same time



# SC 100 Series

The SC 100 headsets make a great impression. From their contemporary sleek styling to great sound for calls and multimedia, they excel in all areas: at your workstation, on the move around the office or on your commute to work, there is a variant tailored to your needs.

With discreet boom arm design, adjustable fit and a choice between acoustic foam or soft leatherette ear pads, the SC 100 headsets are built for flexibility and comfort. Add the productivity benefits of Sennheiser Voice Clarity, a noise-cancelling microphone for optimized speech and Sennheiser HD stereo\* sound, and you have a convenient single solution for all your audio needs. Designed with today's work/life balance in mind, the SC 100 Series makes busy days more effective and listening to music while you work more enjoyable – all in one headset.

### Looks as good in the office as on the daily commute

Sleek contemporary design with bendable boom arm that folds discreetly into the headband

### Great sound for calls and multimedia

Sennheiser HD stereo\* sound for calls or listening to music while working.

### Flexible device connectivity

With options of 3.5 mm jack\*\*, USB-A or USB-C

### Easy transportation or storage

Thanks to an innovative fold-flat ear cup design and carry pouch

### Maximum comfort

With large on-the-ear leatherette or foam ear pads for passive noise damping

See more at [www.sennheiser.com/sc100](http://www.sennheiser.com/sc100)



### ADDITIONAL BENEFITS & FEATURES

- **Optimal speech clarity** – with noise-cancelling microphone to filter out ambient noise and bendable boom arm for accurate microphone positioning
- **Natural listening experience** – with Sennheiser Voice Clarity
- **Perfect fit every time** – with adjustable flexible headband
- **Hearing protection from acoustic shock** with Sennheiser ActiveGard® technology

\* Available on double-sided variants

\*\* Available on SC 1X5 variants

## Comparison Overview SC 100 Series



| Art. No.                           | 508356 | 508355 | 508317 | 508316 | 508319 | 508318 | 508354 | 508353 | 508315 | 508314 |
|------------------------------------|--------|--------|--------|--------|--------|--------|--------|--------|--------|--------|
| <b>Wearing style</b>               |        |        |        |        |        |        |        |        |        |        |
| Single-sided                       |        | •      |        | •      |        | •      |        | •      |        | •      |
| Double-sided                       | •      |        | •      |        | •      |        | •      |        | •      |        |
| Headband                           | •      | •      | •      | •      | •      | •      | •      | •      | •      | •      |
| On-the-ear                         | •      | •      | •      | •      | •      | •      | •      | •      | •      | •      |
| Large leatherette ear pads         | •      | •      | •      | •      | •      | •      |        |        |        |        |
| Large acoustic foam ear pads       |        |        |        |        |        |        | •      | •      | •      | •      |
| <b>Connectivity</b>                |        |        |        |        |        |        |        |        |        |        |
| Softphone/PC via USB               |        |        | •      | •      |        |        |        |        | •      | •      |
| Softphone/PC via USB-C             | •      | •      |        |        |        |        | •      | •      |        |        |
| Mobile phone via 3.5 mm jack       | •      | •      | •      | •      | •      | •      |        |        |        |        |
| Tablet via 3.5 mm jack             | •      | •      | •      | •      | •      | •      |        |        |        |        |
| <b>Microphone</b>                  |        |        |        |        |        |        |        |        |        |        |
| Noise-cancelling microphone        | •      | •      | •      | •      | •      | •      | •      | •      | •      | •      |
| Hideable boom arm                  | •      | •      | •      | •      | •      | •      | •      | •      | •      | •      |
| <b>Features &amp; Technologies</b> |        |        |        |        |        |        |        |        |        |        |
| In-line call control unit          | •      | •      | •      | •      |        |        | •      | •      | •      | •      |
| Optimized for calls & multimedia   | •      | •      | •      | •      | •      | •      | •      | •      | •      | •      |
| ActiveGard® Technology             | •      | •      | •      | •      | •      | •      | •      | •      | •      | •      |
| Carry pouch                        | •      | •      | •      | •      |        |        |        |        |        |        |
| Noise at Work, (EU directive)*     | •      | •      | •      | •      | •      | •      | •      | •      | •      | •      |
| <b>Unified Communications</b>      |        |        |        |        |        |        |        |        |        |        |
| Optimized for UC                   | •      | •      | •      | •      |        |        | •      | •      | •      | •      |
| Skype for Business Certified**     | •      | •      | •      | •      |        |        | •      | •      | •      | •      |

\* In compliance with EU Noise at Work legislation, EU Noise at Work Directive (Directive 2003/10/EC)

\*\* Skype for Business Certification applies when USB/USB-C is connected to PC or Mac

## Comparison Guide ADAPT Solutions

- = Yes
- [●] = Option available with additional accessories

|                                          | MB 660 UC MS | MB 360 UC | PRESENCE™ GREY UC | PRESENCE™ GREY BUSINESS | SC 165 USB-C | SC 135 USB-C | SC 165 USB | SC 135 USB | SC 165 | SC 135 | SC 160 USB-C | SC 130 USB-C | SC 160 USB | SC 130 USB |
|------------------------------------------|--------------|-----------|-------------------|-------------------------|--------------|--------------|------------|------------|--------|--------|--------------|--------------|------------|------------|
| <b>Headset category</b>                  |              |           |                   |                         |              |              |            |            |        |        |              |              |            |            |
| Wireless Bluetooth® headset              | ●            | ●         | ●                 | ●                       |              |              |            |            |        |        |              |              |            |            |
| Wired headset                            |              |           |                   |                         | ●            | ●            | ●          | ●          | ●      | ●      | ●            | ●            | ●          | ●          |
| <b>Connectivity</b>                      |              |           |                   |                         |              |              |            |            |        |        |              |              |            |            |
| via Bluetooth®                           | ●            | ●         | ●                 | ●                       |              |              |            |            |        |        |              |              |            |            |
| via USB                                  |              |           |                   |                         |              |              | ●          | ●          |        |        |              |              | ●          | ●          |
| via USB-C                                |              |           |                   |                         | ●            | ●            |            |            |        |        | ●            | ●            |            |            |
| via 3.5 mm jack                          |              |           |                   |                         | ●            | ●            | ●          | ●          | ●      | ●      |              |              |            |            |
| Multi device connectivity*               | ●            |           | ●                 | ●                       |              |              |            |            |        |        |              |              |            |            |
| Single device connectivity               |              | ●         |                   |                         | ●            | ●            | ●          | ●          | ●      | ●      | ●            | ●            | ●          | ●          |
| <b>Devices</b>                           |              |           |                   |                         |              |              |            |            |        |        |              |              |            |            |
| Softphone/PC                             | ●            | ●         | ●                 |                         | ●            | ●            | ●          | ●          |        |        | ●            | ●            | ●          | ●          |
| Mobile phone                             | ●            | ●         | ●                 | ●                       | ●            | ●            | ●          | ●          | ●      | ●      |              |              |            |            |
| Tablet                                   | ●            | ●         | ●                 | ●                       | ●            | ●            | ●          | ●          | ●      | ●      |              |              |            |            |
| <b>Microphones</b>                       |              |           |                   |                         |              |              |            |            |        |        |              |              |            |            |
| 3 digital noise-cancelling microphones   | ●            |           | ●                 | ●                       |              |              |            |            |        |        |              |              |            |            |
| Dual noise-cancelling microphone         |              | ●         |                   |                         |              |              |            |            |        |        |              |              |            |            |
| Noise-cancelling microphone              |              |           |                   |                         | ●            | ●            | ●          | ●          | ●      | ●      | ●            | ●            | ●          | ●          |
| Hideable boom arm                        |              |           |                   |                         | ●            | ●            | ●          | ●          | ●      | ●      | ●            | ●            | ●          | ●          |
| <b>Features &amp; Technologies</b>       |              |           |                   |                         |              |              |            |            |        |        |              |              |            |            |
| Adaptive Active Noise Cancellation (ANC) | ●            |           |                   |                         |              |              |            |            |        |        |              |              |            |            |
| Active Noise Cancellation (ANC)          |              | ●         |                   |                         |              |              |            |            |        |        |              |              |            |            |
| ActiveGard® Technology                   | ●            | ●         | ●                 | ●                       | ●            | ●            | ●          | ●          | ●      | ●      | ●            | ●            | ●          | ●          |
| SpeakFocus™ Technology                   | ●            |           | ●                 | ●                       |              |              |            |            |        |        |              |              |            |            |
| WindSafe™ Technology                     | ●            |           | ●                 | ●                       |              |              |            |            |        |        |              |              |            |            |
| Room Experience™ Technology              | ●            |           |                   |                         |              |              |            |            |        |        |              |              |            |            |
| Advanced Own-Voice-Detector              | ●            |           | ●                 | ●                       |              |              |            |            |        |        |              |              |            |            |
| TalkThrough                              | ●            |           |                   |                         |              |              |            |            |        |        |              |              |            |            |
| In-line call control unit                |              |           |                   |                         | ●            | ●            | ●          | ●          |        |        | ●            | ●            | ●          | ●          |
| Multimedia and music listening           | ●            | ●         |                   |                         | ●            | ●            | ●          | ●          | ●      | ●      | ●            | ●            | ●          | ●          |
| USB dongle                               | ●            | ●         | ●                 | [●]                     |              |              |            |            |        |        |              |              |            |            |
| Charger stand                            |              |           | [●]               | [●]                     |              |              |            |            |        |        |              |              |            |            |
| Noise at Work, (EC directive)**          |              |           |                   |                         | ●            | ●            | ●          | ●          | ●      | ●      | ●            | ●            | ●          | ●          |
| Software upgrade support                 | ●            | ●         | ●                 | ●                       | ●            | ●            | ●          | ●          | ●      | ●      | ●            | ●            | ●          | ●          |
| <b>Wearing style</b>                     |              |           |                   |                         |              |              |            |            |        |        |              |              |            |            |
| Single-sided headset                     |              |           | ●                 | ●                       | ●            | ●            | ●          | ●          | ●      | ●      | ●            | ●            | ●          | ●          |
| Double-sided headset                     | ●            | ●         |                   |                         | ●            | ●            | ●          | ●          | ●      | ●      | ●            | ●            | ●          | ●          |
| Ear hook or ear sleeve                   |              |           | ●                 | ●                       |              |              |            |            |        |        |              |              |            |            |
| Headband                                 | ●            | ●         | [●]               | [●]                     | ●            | ●            | ●          | ●          | ●      | ●      | ●            | ●            | ●          | ●          |
| Over-the-ear                             | ●            | ●         |                   |                         |              |              |            |            |        |        |              |              |            |            |
| On-the-ear                               |              |           |                   |                         | ●            | ●            | ●          | ●          | ●      | ●      | ●            | ●            | ●          | ●          |
| <b>Unified Communications</b>            |              |           |                   |                         |              |              |            |            |        |        |              |              |            |            |
| Optimized for UC                         | ●            | ●         | ●                 |                         | ●            | ●            | ●          | ●          |        |        | ●            | ●            | ●          | ●          |
| Skype for Business Certified             | ●            |           | ●                 |                         | ●            | ●            | ●          | ●          |        |        | ●            | ●            | ●          | ●          |

\* Connects up to two devices at the same time

\*\* In compliance with EU Noise at Work legislation. EU Noise at Work Directive (Directive 2003/10/EC)

All Sennheiser Communications headsets are covered by a 2-year international warranty for maximum peace of mind.





A man with a beard, wearing a blue suit, is seen from the side, talking to two women. The woman in the center has reddish-brown hair and is wearing a purple blazer over a dark polka-dot shirt. The woman on the right has blonde hair and is wearing a dark blue shirt. They are in a modern office with large windows and wooden accents. A laptop is open on the table in front of them.

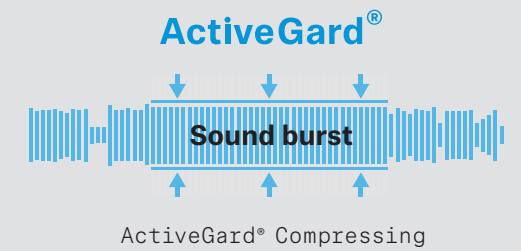
# Our Sound Technologies

Innovation you can hear

# Voice Clarity technology



# ActiveGard® technology



## The natural listening experience

For the best possible communication between caller and listener, Sennheiser Voice Clarity uniquely enhances the most important frequencies and details of the human voice. For the caller, sound is crisper and clearer, allowing them to hear the nuances contained in spoken conversation; for the listener, a noise-cancelling microphone sends the clearest signal to improve speech intelligibility. In combination this results in better, more natural sounding conversations where no important details are lost.



Play sound without Voice Clarity



Play sound with Voice Clarity

## Hearing protection

During the course of a day, headset users may be exposed to seldom, but hazardous incoming noises that can be dangerous to their hearing. Technically referred to as a sound burst, this can potentially cause long-lasting damage to the human ear. To safeguard users, all Sennheiser headsets for contact center and office environments are equipped with innovative ActiveGard® technology.

Please be warned that the sound without ActiveGard® can be extremely high. We recommend the volume should be set low when playing.



Play sound without ActiveGard®



Play sound with ActiveGard®

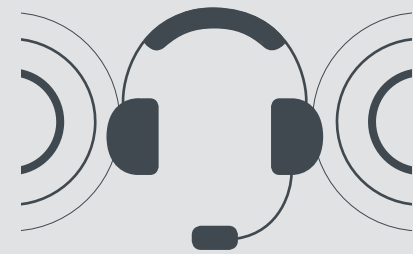
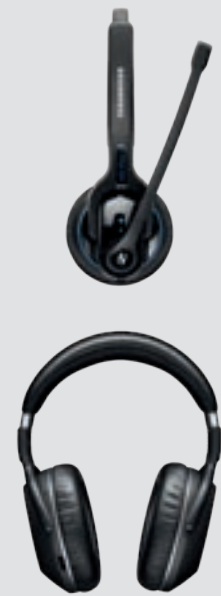


# Room Experience™ technology

A relaxed listening experience

In our ongoing quest for an even better user listening experience, Sennheiser has created a unique new way to experience headset sound on calls. We call it Sennheiser Room Experience™ and it's designed to reduce listener fatigue for all-day users. By externalizing the sound from your head, Room Experience™ gives you the impression that you are having a conversation with a person in the same room. This more realistic sound gives you a more natural and comfortable listening experience with less stress in noisy environments.

This unique feature can be activated and deactivated on the headset (MB 660 and MB Pro 2 headsets) as the user requires. Hear the difference by scanning the QR-codes below\*



Play sound without Room Experience™

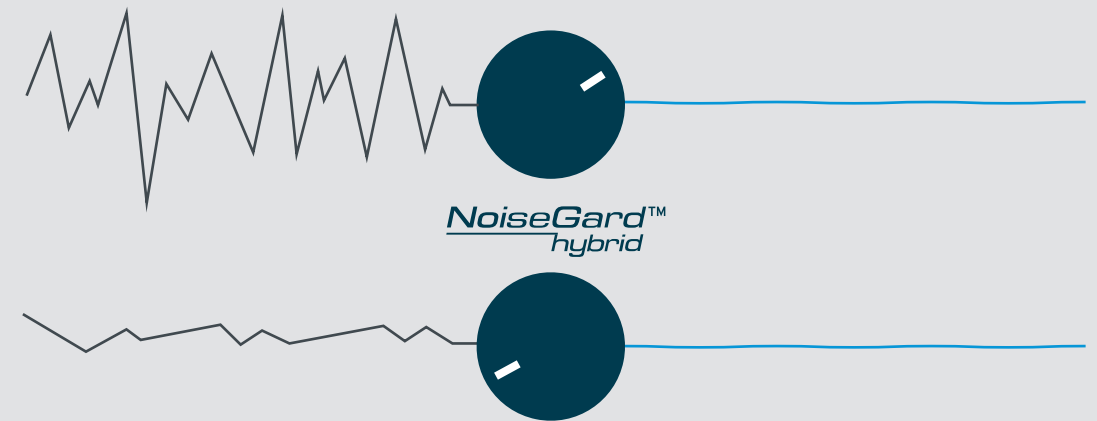


Play sound with Room Experience™

\*Listen to the Room Experience™ sound demo with a double-sided stereo headset.

# NoiseGard™ technology

Sennheiser NoiseGard™ hybrid active noise cancellation technology



Sennheiser has raised the bar on ANC technology with the introduction of MB 660 – the industry's first UC certified adaptive ANC headset. MB 660 leverages the latest, most advanced Sennheiser NoiseGard™ technology to provide today's knowledge workers with an elegant, effective business tool specifically designed to adjust to the challenges of open office environments. Sennheiser's NoiseGard™ hybrid active noise-cancellation technology offers an "adaptive" dimension which constantly monitors your background environment and seamlessly adjusts to ambient noise around you, providing the correct level of suppression where and when it's needed.

This solution is unique from other ANC headsets in that it empowers you to take control of your sound environment, bringing a new dimension

of peace and quiet lacking in other noise-cancellation solutions. With the Sennheiser CapTune sound personalization app, you can even adjust the level for the "adaptiveness" of noise cancellation to suit your individual preference and environment – a smart companion for sound personalization.

Sennheiser's superior headset solutions eliminate the incessant disruptions of today's open workspace and empower employees to reclaim control over their offices, for maximum focus and productivity.



Hear the ANC sound demo at: [www.sennheiser.com/sound-demo-mb-660](http://www.sennheiser.com/sound-demo-mb-660) or scan the QR-code

# SpeakFocus™ technology

The PRESENCE™ and MB 660 Series headsets automatically adapt to environmental differences to deliver the best sound possible with the help of SpeakFocus™ and WindSafe™ technologies.



# WindSafe™ technology



You never know when that important call will come. Be confident that wherever you take it – on the road, on the street or in the check-in queue, your voice can be clearly heard. SpeakFocus™ technology focuses on your voice to deliver a crystal clear sound that enhances speech intelligibility for your listeners.

The unique 3 digital microphone system in the PRESENCE™ and MB 660 headsets focuses on the target sound – your voice – to deliver a calm, steady sound picture, which enhances voice intelligibility for listeners.

SpeakFocus™ technology ensures that your listener receives all the important details of your call to reduce misunderstandings – no matter where you are calling from. The technology zooms in on your voice, works in all sound environments and adapts intelligently whatever the environment.

Play sound without SpeakFocus™



Play sound with SpeakFocus™



Wind noise can make it hard to hear what people are saying on the phone. However, it's the sender that causes the problem not the receiver. Even the best microphones can suffer during breezy conditions, making sound and voices indistinct and difficult to understand. With WindSafe™ technology, you can be sure that your listener won't be troubled by wind noise and that your message gets through, no matter what the weather forecast says.

WindSafe™ technology reduces wind noise to ensure the clearest possible sound is sent to your listener. By choosing the best mix of three microphones and processing the sound, WindSafe™ technology finds the best way to balance and enhance the user's voice when speaking outside in windy conditions.

Play sound without WindSafe™



Play sound with WindSafe™





# Sennheiser HeadSetup™ Pro Manager

## Keep in touch with your business

Save valuable time on unnecessary tasks and make life simpler and smarter for your IT department, your business and your colleagues. By keeping you in touch with your Sennheiser devices, Sennheiser HeadSetup™ Pro Manager puts you in control of three key areas:



### Asset Management

#### Find out who, what, where, when – from wherever

From one location you get full visibility of all Sennheiser headsets and speakerphones deployed in your organization.

Get a perfect overview of who is registered as the device owner, the current user, device ID and FW version. See active and inactive headsets and re-allocate unused headsets elsewhere in the organization - in order to manage your resources effectively and improve productivity.

With the report function, it is possible to extract reports on device usage, device distribution and firmware compliance to get full control of your inventory and gain insights into the company's UC environment.



### Update Management

#### Smart, easy and convenient

A flexible and cost effective way to get the latest firmware updates to all your organization's Sennheiser devices, whenever it's convenient for you and your end-users.

Push new updates to an unlimited number of devices across your organization from one simple dashboard. Schedule your automated updates to cause minimum downtime and disruption for your company's workflow.



### Configuration Management

#### One tool puts you in control

The centralized configuration option allows all settings to be controlled from the IT department, ensuring that headset users experience a simple plug and play solution.

You can centrally push configurations or lock specific specifications on Sennheiser devices to comply with regulatory compliance settings for specific groups or individuals.



## Sennheiser HeadSetup™ Pro Manager for IT administrators

Sennheiser HeadSetup™ Pro Manager has been developed for companies with a need to control their UC environment in a fast and secure way. By installing the client application, Sennheiser HeadSetup™ Pro, on your end-users' PCs, you gain a complete overview of all deployed devices and access to new updates and settings.

For companies with several locations, it's possible to manage, update and control settings for all end-users in the entire organization. For improved security, all communication and data are encrypted and no sensitive data is stored.

The resulting simplification of the asset, update and configuration management gives great savings in both time and money.

## Sennheiser HeadSetup™ Pro for headset users

Sennheiser HeadSetup™ Pro is the client application running in the background on the headset users' PC. The solution ensures that Sennheiser headsets and speakerphones work seamlessly with various leading softphones and give you access to latest firmware updates and personalized settings.

Sennheiser HeadSetup™ Pro is uniquely configured to either work together with a signed-up company account on Sennheiser Sennheiser HeadSetup™ Pro Manager or as a stand-alone application for smaller companies or personal use.

Sennheiser HeadSetup™ Pro is designed to be simple to use, allowing Sennheiser headset and speakerphone users to enhance their experience and productivity simply and quickly.

For more information or to sign up for a free trial, please visit:  
[www.sennheiser.com/headsetup-pro-manager](http://www.sennheiser.com/headsetup-pro-manager)





## Service and Support

We've got you covered

Sennheiser Global Service and Support aims at providing a premium customer experience to all our customers across the world. With a standardized support process across all channels, we can guarantee a uniform, consistent, structured and high quality handling for all support requests, from either end user, resellers, distributors, country partners or subsidiaries, throughout the world.

Visit our Support Portal here:  
[www.sennheiser.com/support-me](http://www.sennheiser.com/support-me)

E-mail:  
[help@senncom.com](mailto:help@senncom.com)

Phone:  
Find your local support phone number and opening hours here:  
[www.sennheiser.com/call-us](http://www.sennheiser.com/call-us)

## Experience Sennheiser

Try our headsets first hand

The Sennheiser professional trial program gives you the opportunity to test and experience our range of headsets and speakerphones before you decide on the best choice for your office, contact center or Unified Communication solution.

[www.sennheiser.com/try](http://www.sennheiser.com/try)





# Glossary

## Sound Quality

**Sennheiser Voice Clarity** uniquely enhances the most important frequencies and details of the human voice. For you, sound is crisper and clearer, allowing you to hear the nuances contained in spoken conversation – and for your listener, a noise-cancelling microphone sends the clearest signal to improve intelligibility. In combination, this results in better, more natural sounding conversations where no important details are lost.

**SpeakFocus™ technology** ensures that your listener receives all the important details of your call to reduce misunderstandings – no matter where you are calling from. The technology zooms in on your voice, works in all sound environments and adapts intelligently whatever the environment – for instance in the car, in the office, at a seminar or at the airport.

**Room Experience™ technology** reduces listener fatigue for all-day users. By externalizing the sound from your head, Room Experience™ gives you the impression that you are having a conversation with a person in the same room. This more realistic sound gives you a more natural and comfortable listening experience and reduces listener fatigue.

**WindSafe™ technology** reduces wind noise to ensure the clearest possible sound is sent to your listener. By choosing the best mix of three microphones and processing the sound, WindSafe™ technology finds the best way to balance and enhance the user's voice when speaking outside in windy conditions.

**NoiseGard™ hybrid adaptive ANC** By constantly monitoring your background environment for noise, Sennheiser's NoiseGard™ hybrid adaptive ANC technology seamlessly adjusts the level of noise reduction in your headset. This unique technology enables you to take control of your sound environment, so you can have a productive, disruption-free workspace.

**TalkThrough** gives you the option of being able to listen to your colleagues or keep an ear open for announcements – without removing your headset.

**Advanced Own-Voice-Detector** Sennheiser's Advanced Own-Voice-Detector continuously monitors the environment to determine whether the user's own voice is present or not. When detected, the state-of-the-art system reacts immediately to provide optimal speech intelligibility while at the same time reducing disturbing background noise.

**Wideband audio technology** operates in the extended frequency range of 150–6800 Hz and offers higher quality speech transmission than narrowband. To be able to use wideband, all components of the communication line must support this standard (PPX, mobile network operator etc.).

**Noise-cancellation technology** is incorporated in our microphones to reduce background noise, filter out disturbing ambient noise and enable crystal clear telephone conversations. On certain models in our range we offer ultra-noise cancelling microphones, which are able to improve voice transmission in particularly noisy environments.

## Hearing Protection

**ActiveGard® hearing protection technology** protects users from the potential danger of acoustic injury from unexpected and sudden sound bursts on the line. ActiveGard® is like a fast-acting intelligent volume control. If an incoming signal rises to a level that is harmful to your hearing, it is instantly reduced to a lower, and more comfortable level. When the sound level returns to normal, the volume returns to the original level.

## Noise at Work Limiter

**Directive 2003/10/EC** The objective of this Directive is to lay down minimum requirements for the protection of workers from risks to their health and safety arising or likely to arise from exposure to noise and in particular the risk to hearing. The Directive defines the physical parameters that serve as risk predictors, such as peak sound pressure, daily noise exposure level and weekly noise exposure level. It sets exposure limit values and exposure action values in respect to the daily and weekly noise exposure level as well as peak sound pressure. The exposure action value is fixed at 80 decibels (lower value) and 85 decibels (upper value). Source: [www.osha.europa.eu/en/legislation/directives/82](http://www.osha.europa.eu/en/legislation/directives/82)

## Unified Communications

**UC Optimized** means that headsets and speakerphones are compatible with major Unified Communications platforms and softphone brands. Unified Communications brings together a company's voice, text and video based communication under one unified solution. The advantages of a Unified Communications solution include enhanced overall efficiency of a business through increased productivity and mobility, resulting in a positive return on investment.

**Skype for Business Certified** means that products are certified for Skype for Business. Headset and speakerphones have been fully tested to ensure compatibility with Skype for Business, Microsoft Teams and Microsoft® Office 365. You can simply answer or end calls, adjust volume, or mute calls through the headset or speakerphone's call control features.

## Wearing style

**Single-sided** headsets are ideal for situations where you need to both hear your caller clearly, and pay attention to what's going on around you.

**Double-sided** headsets delivers calls in quality sound while reducing background noise – ideal for contact centers, where you need to focus solely on your caller.

## Wireless Technologies

**Bluetooth® technology** is a global radio transmission standard, which supports the application of a wide range of wireless electronic devices. The technology connects devices over a distance of up to 100 meters in line of sight, depending on the Bluetooth® class and device.

### About Bluetooth®

|              |                                                                                    |
|--------------|------------------------------------------------------------------------------------|
| Frequency    | 2.4 GHz                                                                            |
| Range        | Typical office environment: Up to 25 m/82 ft*<br>Line of sight: Up to 100 m/328 ft |
| Connectivity | Mobile phone, tablet and/or PC (via dongle)<br>* device dependent                  |

# Choose the right headset

You need your device to work seamlessly with your headset. It's that simple. Sennheiser headsets are designed to cover every possibility.

Check our headset compatibility guide at: [www.sennheiser.com/headsetcompatibility](http://www.sennheiser.com/headsetcompatibility)



## Device/Connectivity



### Softphone/PC

Connection via USB/USB-C cable or USB dongle (Bluetooth®) to Microsoft Windows or Apple Mac OS



### Desk phone

Connection via multiple types of cables



### Mobile phone

Connection via Bluetooth® or 3.5 mm jack cable



### Tablet

Connection via Bluetooth®, 3.5 mm jack cable or USB depending on tablet



# Reimagine the way you work