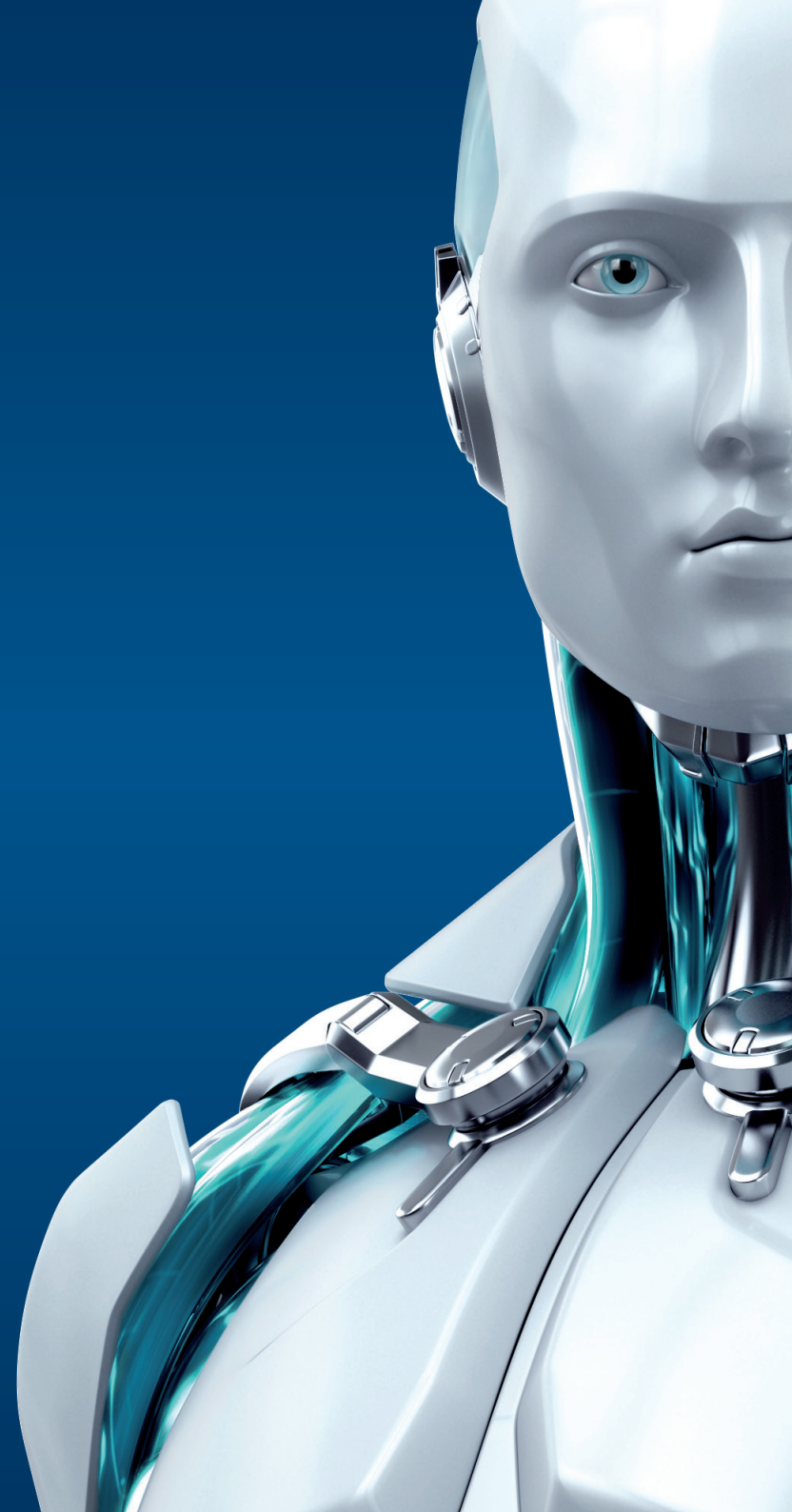




MOBILE DEVICE MANAGEMENT

FOR APPLE iOS

ENJOY SAFER TECHNOLOGY™





MOBILE DEVICE MANAGEMENT

FOR APPLE iOS

Integration of Apple iOS MDM framework in ESET Remote Administrator 6.3 allows to configure security-related settings of iOS device from the same place, as for other ESET Security products, while no app is installed on the iOS device. You can enroll both – iPhones and iPads – and setup a security profile on them that will allow you to adjust their security settings including Anti-Theft, setting for the Exchange, Wi-Fi, and VPN accounts, Passcode, iCloud and others.

Push account settings remotely	Remotely push out account settings to iOS devices in batches – for the Exchange, Wi-Fi, and VPN accounts.
Manage device settings remotely	Significantly increase the security of your company's iOS devices by remotely pushing out security settings and restrictions of Passcode, iCloud, Privacy and others.
Anti-Theft protection	Remotely lock/unlock devices or wipe all the data they hold in case they are lost or stolen.
Remote management	ESET Mobile Device Management for Apple iOS comes integrated within ESET Remote Administrator 6.3+, giving you a single point of overview of network security, including all endpoints, mobiles & tablets (iOS, Andorid) and servers.
Cost effective	No need for dedicated solutions – take advantage of Apple iOS Management Framework and oversee security of all company iOS devices – from a single point with ESET Remote Administrator 6.
Simple licensing	Mix and match your license seats exactly as you need. Migrate seats from one device to another, regardless of the OS. For example, you can move the license seat from ESET Endpoint Security for Android to ESET Mobile Device Management for Apple iOS and vice versa.
Prerequisites	<ul style="list-style-type: none">• ESET Remote Administrator 6.3 and newer• ESET MDM Core (ESET Remote Administrator Mobile Device Connector)• Company Apple iTunes ID• Valid ESET license• iOS devices running on iOS 8+ (iPhone and iPad)