



McAfee NetShield for Netware Servers

Secure your Netware servers

Virus outbreaks disrupt the flow of your e-business, affecting your profitability and your employee productivity. McAfee® NetShield® for Netware safeguards your data and minimizes the threat of virus attacks

NetShield for Netware requires no complicated setup or administration as it detects virus-infected files that are accessed, copied, or written to the server. Infected files are automatically cleaned, quarantined, or deleted.

Proactive Protection From Viruses

NetShield for Netware uses the award-winning McAfee scanning and cleaning engine to detect and clean viruses. Protect your Netware files from viruses, worms, Trojans, and other threats.

Protection From Tomorrow's Threats

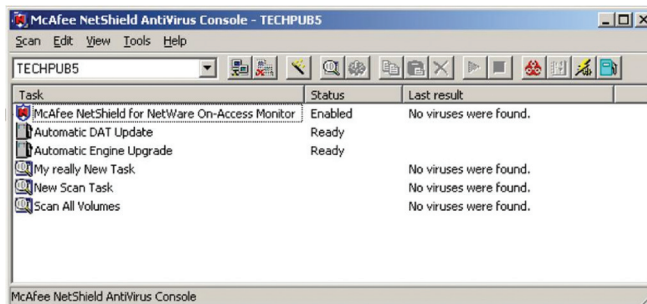
NetShield for Netware uses heuristic analysis and generic detection to protect—in advance—against new and unknown viruses.

Continuous, On-Access Scanning

On-Access scanning protects users in real time when files are accessed, copied, or written to the server.

Manage Your Security

NetShield for Netware works with McAfee ePolicy Orchestrator® (ePO™). ePO keeps protection up to date and monitors security status from a single console. With ePO, remote deployments and security management are easily managed from a central location.



Automatic Updates

Virus security products are only as good as their most recent updates. With NetShield for Netware, automatic updates ensure that your Netware servers are always up to date with the latest McAfee DAT files and engines.

Novell Yes Tested and Approved

NetShield for NetWare is tested, approved, and has earned the Novell Yes logo certification. McAfee is also a strategic Novell partner, which means faster, easier, and more integrated virus defense for customers in Novell environments or mixed NetWare/NT networks. NetShield for Netware supports Novell Directory Services (NDS), allowing administrators to receive automatic notification of virus detection. And NetShield for NetWare also supports NetWare Storage Services (NSS). NetShield for NetWare has been approved for use with the latest Novell technologies.

Trusted Server Updating

NetShield for Netware uses Netware to update virus definition files (DAT files) from a local server without the use of FTP. Your administrator can specify an IPX or IP server as a *trusted server* to store updated DAT files. Each NetShield for Netware server sends a query packet to the trusted server on a scheduled basis. DAT files are retrieved and automatically installed.



Learn More

Visit www.mcafee.com, or call us at 888.847.8766, 24 hours a day, seven days a week.

McAfee NetShield for Netware is part of the McAfee family of business security products and services. McAfee provides a comprehensive portfolio of integrated risk management and mitigation solutions that secure your business advantage.

Professional Services

Along with our partners, McAfee offers a wide variety of services to help you assess, plan, deploy, tune, and manage your security.

Technical Support

Make sure that everything runs smoothly during and after installation with flexible programs from McAfee Technical Support. Our highly skilled and certified security specialists have a wealth of knowledge and resources to meet your security needs.

System Requirements

Note: The following are general system requirements and may vary depending on the nature of your environment.

Platform: Netware 5.1, Support Pack 3 or greater; Netware 6.0; Netware 6.5

Disk space: 4MB

Memory: 4MB RAM