



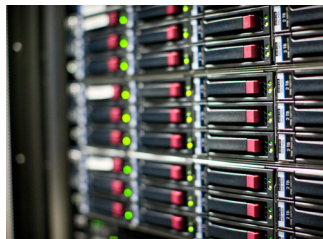
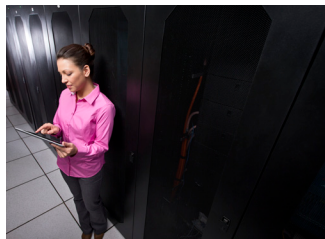
## IRON MOUNTAIN DATA CENTERS NORTHBOROUGH, MASSACHUSETTS

### DEMAND MORE FROM YOUR DATA CENTER PROVIDER

**MORE THAN JUST COLOCATION** Making sure your data center has ample power to support the business is only part of the story. With Iron Mountain Data Centers, your operation can move to a secure, compliant and highly resilient environment that is hardened to withstand extreme environmental conditions and built in accordance with the most stringent regulatory standards.

**MORE THAN JUST A BUILDING** Data center operations are rarely a core competency of most businesses, and maintaining an internal data center means keeping pace with a host of changing requirements. By transferring your data center operations to a facility that is managed using proven procedures and best practices - and supported by a portfolio of compliant services - you can focus on the mission-critical applications and information that drive your business.

**MORE THAN JUST A LANDLORD** Since 1951, organizations have trusted Iron Mountain to safeguard their most vital information. More than 156,000 organizations in 32 countries protect their most important information in our facilities. Now you can rely on the same brand to deliver the security, compliance and robust services you trust for your data center.



## COLOCATION OPTIONS

### WHOLESALE DATA CENTER

Iron Mountain provides dedicated, Secure Suite space available with scalable growth options and metered power.

### RETAIL COLOCATION

If your organization does not require a large, dedicated environment, you can transition your operations to a secure cage or cabinet environment.

## DATA CENTER SERVICES

- Migration services
- Installation and structured cabling services
- IT asset tracking services
- Secure network services
- Compliant network intrusion detection and prevention services
- Offsite Tape Vaulting
- Secure IT Asset Disposition

## DATA CENTER FEATURES

- Each "Data Hall" measures up to 10,000 square feet
- 1.2MW of UPS power
- Concurrently maintainable Tier III certified constructed facility
- 2N powertrain with modular A & B PowerCenters (patent pending)
- N+1 mechanical
- High-density support (up to 20 kW racks without containment)
- 1,100 square feet storage/staging room
- Dual-fiber entrance facilities for highly assured networking

To learn more visit  
[ironmountain.com/datacenters](http://ironmountain.com/datacenters)  
or contact us at  
[datacenters@ironmountain.com](mailto:datacenters@ironmountain.com).

## INNOVATIVE DESIGN

- LEED Gold Certified
- No columns on data center floor to maximize layout flexibility (12-foot clear height)
- 36-inch raised floor
- Overhead cable distribution with bus-line power
- Multiple rack layout options
- Low PUE (1.5 or lower) curve at all load levels

## ULTRA-RELIABILITY STANDARDS

- Meets Miami-Dade County standard (up to 149 mph wind speed)
- High seismic rating

## SPECIFICATIONS

### MECHANICAL

- Four 120-ton packaged air handlers (N+1)
- Outside air economization with integrated synchronization controls
- High-efficiency VFDs

### POWER

- 2,500 kVA transformer
- 2N 2 MW generators
- 3000A main-tie switchgear
- Two 1.2 MW of UPS power (2N)
- Eight 300 kVA PDUs (2N)
- Generator-backed house loads

### TELECOMMUNICATIONS

- Carrier neutral
- Two POP rooms supplied by dual-fiber entrance facilities

### SITE SECURITY

- 24x7x365 Iron Mountain Security Staff
- Digital camera monitoring and recording
- Dual-authentication access control
- Biometrics
- Ballistic sheathing and bulletproof glass for security

### SITE OPERATIONS

- Secure loading dock
- Lobby, break room, restrooms
- Customer offices with generator power



**ABOUT IRON MOUNTAIN.** Iron Mountain Incorporated (NYSE: IRM) provides information management services that help organizations lower the costs, risks and inefficiencies of managing their physical and digital data. Founded in 1951, Iron Mountain manages billions of information assets, including backup and archival data, electronic records, document imaging, business records, secure shredding, and more, for organizations around the world. Visit the company website at [www.ironmountain.com](http://www.ironmountain.com) for more information.

© 2013 Iron Mountain Incorporated. All rights reserved. Iron Mountain and the design of the mountain are registered trademarks of Iron Mountain Incorporated in the U.S. and other countries. All other trademarks are the property of their respective owners.