



NetApp®

Datasheet

OnCommand Workflow Automation

Automate custom processes for virtual and cloud environments



KEY BENEFITS

Create Custom Workflows Quickly and Easily

- Easily set up, provision, migrate, and decommission storage
- Achieve fast, reliable deployments for key applications including VMware®, Oracle®, Microsoft®, SAP®, and Citrix
- Integrate with other IT systems

Adhere to Storage Best Practices

- Enable a consistent method for creating workflow processes
- Provide flexibility to meet numerous stakeholders' needs
- Control the cost of managing complex virtual and cloud environments

The Challenge

Manual processes are insufficient

As organizations continue to virtualize and create private and hybrid cloud environments, IT organizations are turning to integrated automation and management solutions to help them manage their increasingly complex environments. According to IDC, 2012 was the beginning of the second phase of server virtualization, with IT organizations focusing on the soft benefits of automation and portfolio management.¹

Today, many IT organizations perform the majority of their storage management tasks manually. There are many downsides when using manual processes: It is open to human error, provisioning may be delayed until staff is available, best practices may not be followed, and storage may not be optimized. At the same time, cloud-based processes require high levels of automation—not manual processes. Alternatives such as custom software and orchestration solutions may prove to be too difficult for generalists or too expensive to operate and maintain. These alternatives may also lack a comprehensive storage automation component.

How can you meet the automation needs driven by your virtual and cloud environments? You need the right tools

from a partner who understands your business as it evolves from a virtualized to a cloud environment.

The Solution

Workflow automation saves time and money

OnCommand® Workflow Automation meets the demands of today's evolving IT organization, enabling storage administrators to create storage workflows and perform one-click automation. Whether managing a virtualized or a cloud environment, Workflow Automation provides the ability to create simple or complex workflows in just minutes. Now you can integrate storage workflows with existing IT processes and align with NetApp best practices.

Fast and reliable automation

Software engineering skills are not required to use OnCommand Workflow Automation, and Web-based training is available to make sure you start out smoothly. Using Workflow Automation, you view each workflow as a series of steps, from start to finish, completing a process. Your storage architects or administrators can define workflows and follow specific requirements that align with NetApp best practices. You also maintain control over development and maintenance of the automated workflows for consistent and reliable service.

1. IDC, "IDC's Top Enterprise Server Predictions for 2012," January 24, 2012

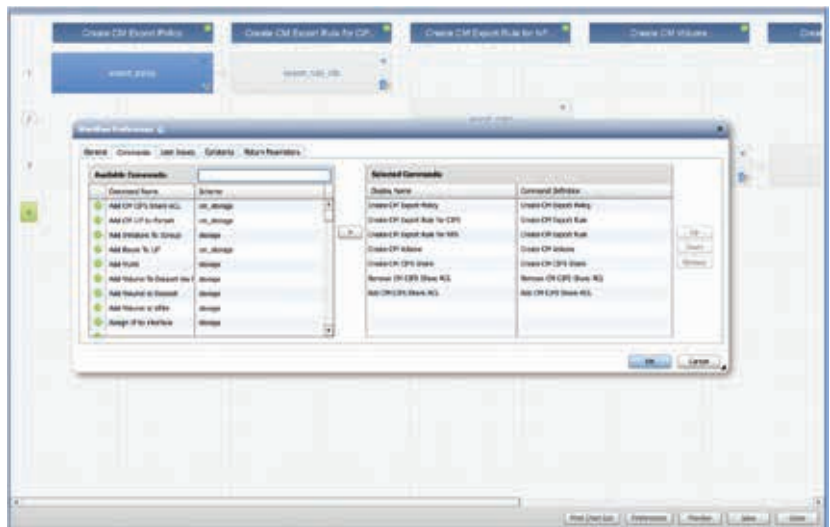


Figure 1) OnCommand Workflow Automation: Build your workflow easily, following a step-by-step design process.

With Workflow Automation, you can create a range of storage workflows to:

- Provision, migrate, or decommission storage for databases or file systems.
- Set up a new virtualization environment, including a storage switch or datastore.
- Set up storage for an application as part of an end-to-end orchestration process.
- Set up the FlexPod® data center platform or virtual desktops, perform storage cloning, or conduct a centralized NetApp® SnapManager® software activation

Take away the guesswork

You start by using the designer interface to construct or modify your workflow. Workflow Automation provides a rich library of predefined building blocks. You can also add another building block to the library or collaborate with NetApp to add a new building block. Then you select from a list of commands to build the workflow steps, identify your execution options, and define your resource selection options. You can build workflows for a virtualized environment or a private, hybrid, or public cloud. There are numerous options that give you ample flexibility for building your workflows.

Once you have defined your workflow, you can test and publish the workflow to authorized users. The workflows are accessed and executed via the Workflow Automation portal. You can schedule them for execution at a later date, or use an orchestration tool to trigger execution using Web services.

Integration for additional value

Workflow Automation integrates with OnCommand Unified Manager to collect data about the environment and with the arrays to send execution commands. This lets you leverage information in numerous OnCommand Unified Manager deployments. Workflow Automation also has many ways to connect to internal systems and collect information to determine resource selection, open tickets, and more. For example, Workflow Automation integrates with VMware vCloud® Director™ and lets you perform vApp cloning with a single click. These capabilities allow the automation process to be executed across environments and data centers.

Ongoing benefits

With Workflow Automation you get peace of mind knowing that you are creating automated workflows according to best practices. It also provides a full history of all your executed workflows and results. You can see who executed

each workflow, and when the workflow was executed. This history can be used for troubleshooting and audit purposes, so when things do not go as planned, you can pinpoint and resolve issues more easily. You benefit by having optimized storage, consistent processes, and operational savings from this streamlined process.

Learn more about Workflow Automation

OnCommand Workflow Automation is part of the OnCommand management software portfolio. Go to www.netapp.com/oncommand to learn more about the management portfolio, including Workflow Automation.

Explore the OnCommand portfolio community, including Workflow Automation, at www.netapp.com/oncommand_community.

About NetApp

NetApp creates innovative storage and data management solutions that deliver outstanding cost efficiency and accelerate business breakthroughs. Discover our passion for helping companies around the world go further, faster at www.netapp.com.

Go further, faster®



www.netapp.com

© 2012 NetApp, Inc. All rights reserved. No portions of this document may be reproduced without prior written consent of NetApp, Inc. Specifications are subject to change without notice. NetApp, the NetApp logo, Go further, faster, FlexPod, OnCommand, and SnapManager are trademarks or registered trademarks of NetApp, Inc. in the United States and/or other countries. VMware and vCloud are registered trademarks and vCloud Director is a trademark of VMware, Inc. Microsoft is a registered trademark of Microsoft Corporation. SAP is a registered trademark of SAP AG. All other brands or products are trademarks or registered trademarks of their respective holders and should be treated as such. DS-3292-1212

Follow us on:

