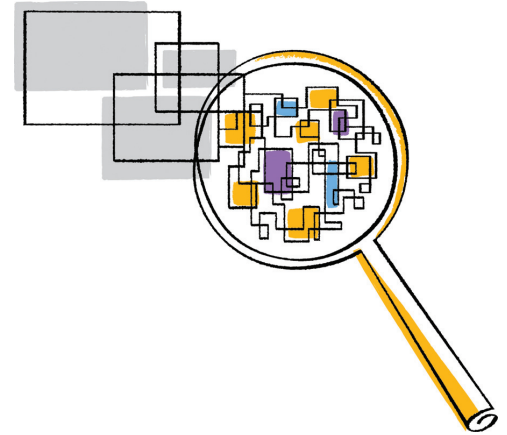




NetApp®



Datasheet

OnCommand Unified Manager 6

Automated monitoring and alerting for clustered Data ONTAP

KEY FEATURES

Improve Availability

Track storage health, identify where availability is at risk, and take corrective action.

Maximize Capacity Utilization

Identify capacity issues before they become critical and take corrective action based on suggested remediation.

Enhance Data Protection

Verify that all data is adequately protected; monitor your SnapMirror® and SnapVault® environments; integrate with SnapProtect™ technology to manage your NetApp® data protection environment.

The Challenge

Having the ability to scale out with clustered storage is the best way to keep pace with rapid storage growth and the IT demands created by modern business practices and round-the-clock global operations. However, managing data at scale in a clustered storage environment introduces new challenges requiring a more comprehensive approach to storage management with greater flexibility and higher levels of integration.

The Solution

NetApp OnCommand® Unified Manager 6 has been completely redesigned to support the unique capabilities of the clustered Data ONTAP® operating system, letting you more easily monitor and alert on the health, availability, capacity, and data protection status of your NetApp clustered storage. A simplified graphical user interface enhances the overall user experience; graphical representations of complex information make it easier to see and understand what's happening.

And Unified Manager 6 also integrates the management of Infinite Volume content repositories and NetApp SnapProtect.

Simple, Powerful Management for Clustered Data ONTAP

Unified Manager 6 lets you discover, monitor, and set alerts on clustered storage running Data ONTAP 8.1.x or later. A new management server provides a foundation for improved availability, scalability, supportability, and security.

Maximize availability

With Unified Manager 6, you can view storage availability and overall storage health by cluster, aggregate, or Storage Virtual Machine (SVM, previously known as a Vserver). You'll be able to quickly understand where availability is at risk and the corrective actions you can take to eliminate potential issues and avoid unplanned downtime.

Get capacity under control

Unified Manager 6 lets you project when you'll run out of capacity and identify the best corrective actions

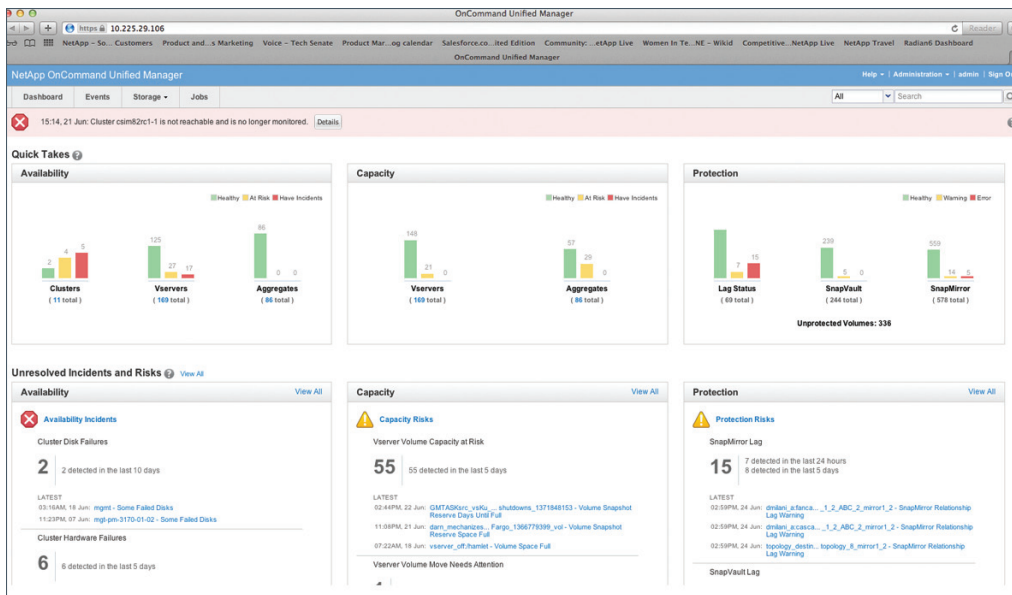


Figure 1) The OnCommand Unified Manager 6 dashboard provides a single, unified view of the clustered storage environment.

to head off issues. You can quickly determine where to provision volumes for new workloads and where to move volumes to minimize the risk of running out of capacity.

Optimize data protection

In a busy storage environment, it can be difficult to be sure that your data is adequately protected. OnCommand Unified Manager 6 lets you immediately see whether data is protected. Health monitoring for SnapMirror, SnapVault, and SnapProtect identifies when data protection relationships are at risk due to capacity or configuration changes.

Advanced Monitoring and Alerting Discovery

Once Unified Manager 6 discovers your NetApp storage clusters, it automatically discovers and recognizes physical objects including cluster nodes, disks, shelves, HA pairs, ports, and Flash Cache™ devices—plus logical objects such as clusters, VSMs, aggregates, volumes, LUNs, qtrees, logical interfaces, Snapshot™ copies, and the junction

paths used to join numerous volumes into a single namespace. From the main dashboard you can easily see availability, capacity, and protection status and drill down to see details on physical or logical objects.

Comprehensive monitoring

Monitoring and alerting are fully dynamic and include graphical representations of topology, trending, and historical information that facilitate root-cause analysis and let you optimize utilization. Full monitoring of your SnapMirror and SnapVault environments, including cascaded and fan-out topologies, helps you keep important data protection operations completing on schedule.

All event, alert, and threshold management capabilities have been improved to make them more flexible. For example, you can easily assign alerts to individual objects or numerous objects. Dynamic inclusion/exclusion of resources in alerts helps reduce the noise created by false positives.

Broad support

Unified Manager 6 supports all SAN and NAS protocols and all NetApp storage efficiency technologies, including thin provisioning, deduplication, and compression. Virtual Storage Tier technologies—Flash Cache and Flash Pool™ intelligent caching—are also supported.

Historical data

Volume move status and history and junction path change history help you keep better track of cluster events and better leverage clustered Data ONTAP features.

Enhanced User Interface

The user interface has been substantially redesigned for Unified Manager 6, providing a consistent look and feel across all functions. Extensive usability testing was conducted to validate the new user interface. The dashboard provides a greatly improved user experience, and includes graphical representations and exception-based views that make it easy to identify issues.

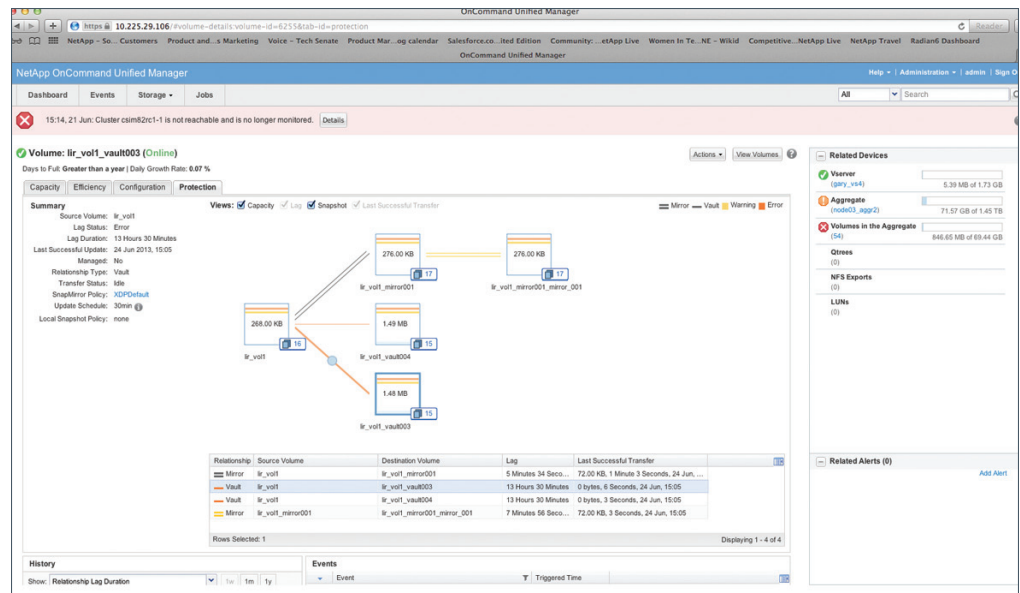


Figure 2) Monitoring SnapVault and SnapMirror with Unified Manager 6. The topology view example illustrates a failed data protection relationship.

New Server Infrastructure

Unified Manager 6 runs as a VMware® virtual appliance. This simplifies installation and management and provides better scalability to accommodate larger object counts as you move more data into clusters. Supportability has been improved with enhanced logging and a new support bundle.

Streamlined Capacity Management

Unified Manager 6 lets you track capacity-related issues via events, simplifying the identification and remediation of capacity issues. Similar to the way a support ticketing system works, individual events can be assigned to specific administrators for resolution.

Contextual and dynamic recommendations for resolving volume capacity events help you quickly mitigate issues. For example, in a Volume Space Full event, suggested remediation might include enable autogrow on the

volume, resize the volume, enable and run deduplication, enable and run compression, and delete old Snapshot copies.

Content Repository Management

Unified Manager 6 includes new features for managing Infinite Volume content repositories. It lets you discover and display content repository VSMs and storage classes, and it includes a Content Repository Policy Editor so you can quickly review and change the data placement policies that apply to particular content repositories.

SnapProtect Integration

NetApp SnapProtect integrates core components of CommVault Simpana with core NetApp technologies. This combination delivers all the benefits you expect from Snapshot copies, SnapMirror, and SnapVault, plus full tape support, cataloging, and more. Unified Manager 6 lets you integrate SnapProtect in a clustered Data ONTAP environment.

OnCommand Workflow Automation Integration

Unified Manager 6 works in conjunction with OnCommand Workflow Automation to automate administrative tasks and integrate with your existing orchestration and data protection processes. OnCommand Workflow Automation lets you define templates that can be implemented as policies so that provisioning tasks are always performed using the same process.

Updated APIs

APIs in Unified Manager 6 have been updated to conform to the Data ONTAP API standard. Unique API features let you create a storage service and provision storage or enable integrated data protection using Workflow Automation.

NetApp Storage
<ul style="list-style-type: none"> • System Manager. Simple device management. • Unified Manager. Storage management at scale. • Workflow Automation. Standardize processes. • Report. Roll-up reporting. • Balance. Optimize performance, predict problems.
For Multi-Vendor Storage
<ul style="list-style-type: none"> • Insight. Capacity management, financial reporting.
For Integration
<ul style="list-style-type: none"> • SnapCreator® framework, SnapDrive®, SnapManager®, SDK/API. Integrated orchestration and data protection.

Figure 3) NetApp OnCommand management and integration product portfolio.

The OnCommand Product Portfolio

The OnCommand management software family is designed to make NetApp storage the best solution for physical, virtual, and cloud environments. It includes products that help you control, automate, analyze, and integrate your storage.

Learn More

To learn more about how NetApp OnCommand management software provides the efficiency you need to keep pace with data growth and

changing business requirements, go to www.netapp.com/oncommand or contact your local NetApp partner or sales representative.

Explore the OnCommand community at www.netapp.com/oncommand_community. From there you can visit the Unified Manager community space—or any of the other product-specific community spaces—to interact with subject-matter experts, access details on getting started, and more.

About NetApp

NetApp creates innovative storage and data management solutions that deliver outstanding cost efficiency and accelerate business breakthroughs. Discover our passion for helping companies around the world go further, faster at www.netapp.com.

Go further, faster®



www.netapp.com

© 2013 NetApp, Inc. All rights reserved. No portions of this document may be reproduced without prior written consent of NetApp, Inc. Specifications are subject to change without notice. NetApp, the NetApp logo, Go further, faster, Data ONTAP, Flash Cache, Flash Pool, OnCommand, Snap Creator, SnapDrive, SnapManager, SnapMirror, SnapProtect, Snapshot, and SnapVault, are trademarks or registered trademarks of NetApp, Inc. in the United States and/or other countries. VMware is a registered trademark of VMware, Inc. All other brands or products are trademarks or registered trademarks of their respective holders and should be treated as such. DS-3498-0613

Follow us on:

