

Recovery Series Purpose-Built Backup Appliances

Today's modern backup and recovery solutions must be as agile and elastic as the IT environment they protect. Organizations face unrelenting data growth, increased server virtualization, and new silos of high performance physical server applications. Meanwhile, the fast pace of business demands aggressive Recovery Point Objectives (RPO), Recovery Time Objectives (RTO) and Service Level Agreements (SLAs). Unitrends Recovery Series appliances are purpose-built to meet these challenges.



Unitrends Recovery Series Appliance Family

Recovery Series Appliance Family

Unitrends Recovery Series Appliances ease the pain of managing data protection, backup, and restoration.

Unitrends helps companies deal with growing data volumes and tight backup windows by providing a unified appliance with storage that simplifies backup and recovery operations.

Available in 14 models from 1 TB to 182 TB of raw storage.

- **Next-generation hardware with tiered flash storage** (starting in model 713S and up) provides improved backup performance, faster restore and recovery process, with greater scalability and flexibility.
- **Best-in-class unification across physical and virtual** servers as well as hundreds of operating systems and applications. Simplified administration enables seamless integration with physical and virtual applications.
- **All-in-one appliance hardware** includes CPU, disk, and networking as well as comprehensive data protection. Features include in-line deduplication, instant recovery (Windows, VMware, Hyper-V), bare metal recovery, archive, and WAN optimized replication with encryption in flight and at rest.
- **Easy-to-use, centralized management** of data protection for remote and branch offices, while lowering capital and operational costs and improving disaster recovery preparedness.

“ The number one benefit of using Unitrends is that I get to sleep at night and not worry about my backups.

- Philip Moya, San Antonio Kidney Disease Center

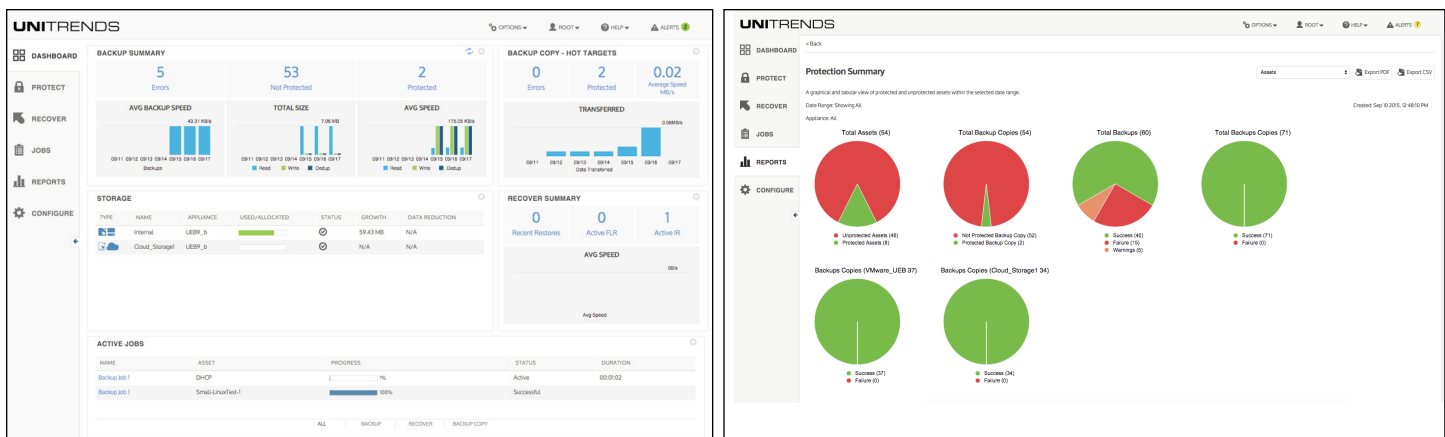
”

Available in 14 All-In-One Integrated Appliance Models

From the remote office to the enterprise, Recovery Series appliances offer from 1 TB to 182 TB of raw storage, 8 GB to 256 GB memory, and 2 to 16 CPU cores, all managed from a single pane of glass.

Comprehensive Data Protection & Recovery

- **Designed to fit any infrastructure**—Physical, virtual, and over 220 of versions of servers, storage, operating systems, hypervisors, and applications.
- **Provides flexible data protection**—Customizable backup strategies, multi-server scheduling, group management, and application aware protection.
- **Protects large scale deployments**—Enhanced storage integration with NDMP NAS protection.
- **Includes local archiving**—D2D2X for long term retention, cloud seeding, and recovery.
- **Incorporates WAN optimized replication**—Combines adaptive deduplication, deduplication acceleration, compression, and encryption for secure byte-level data transmission.
- **Adaptive data deduplication**—Combines global deduplication, inline deduplication, deduplication acceleration and in-place synthetics to speed up backups and optimizes storage capacity and WAN data transfer.
- **New, easy to use RESTful API**—Allows integration of Unitrends backup to additional programs and operational procedures.
- **Radically simple user experience**—New user interface significantly reduces management time by providing a dashboard view for identifying risk, solving problems, and managing storage.



Complete Recovery

- **Cloud-empowered disaster recovery and business continuity**—Backup and recovery in the cloud with Unitrends No Limits Cloud™, Forever Cloud, and Disaster Recovery as a Service (DRaaS), or to 3rd party clouds.
- **Recovery Assurance**—the industry's first automated recovery solution for Windows Physical, VMWare, and Hyper-V virtual environments, dramatically reducing the cost of disaster recovery testing and recovery (optional add-on).
- **Near continuous data protection**—Enable backups as often as every 60 seconds for world class RPO.
- **Unitrends Bridge**—Local instant recovery of physical (P2V) or virtual (V2V) in one click.
- **Unified Bare Metal**—One pass dissimilar bare metal restore.

Unparalleled Customer Support

- **Free hardware for life**—Enroll in our Pledge program for a free replacement appliance after year 3. Available for purchase with a qualifying support contract.
- **Award winning customer support**—98% customer satisfaction rating.

Recovery Series Appliance Family Specifications

	201	602	603	604	713S	714S	814S	823S	824S	933S	936S	943S	944S	946S
Raw Capacity (TB)	1	2	3	4	6	8	12	19	25	37	73	97	122	182
Suggested Backup (TB)	500 GB	1.1	1.6	2.4	3.6	4.8	7.2	11.4	15	22	44	63	80	118
Form Factor	Desk-top	1U Short	1U Short	1U Short	1U	1U	1U	2U	2U	3U	3U	4U	4U	4U
Processor Cores/Threads	2/2	4/4	4/4	4/4	8/8	4/8	4/8	4/8	12/24	12/24	12/24	16/32	16/32	16/32
RAM (GB)	8	8	8	8	16	16	16	32	64	128	256	256	256	256
AES-NI	Ø	✓	✓	✓	✓	✓	✓	✓	✓	✓	✓	✓	✓	✓
IPMI	Ø	Ø	Ø	Ø	Ø	✓	✓	✓	✓	✓	✓	✓	✓	✓
Hot Swap Drives	Ø	Ø	Ø	Ø	OS/Backup	OS/Backup	OS/Backup	OS/Backup	OS/Backup	OS/Backup	OS/Backup	Backup	OS/Backup	OS/Backup
PCI Slots	Ø	Ø	Ø	Ø	Ø	2	2	3	5	5	5	5	5	5
Storage	201	602	603	604	713S	714S	814S	823S	824S	933S	936S	943S	944S	946S
SSD Flash (in GBs)	Ø	Ø	Ø	Ø	128	128	256	256	256	480	480	480	480	480
OS Disk (in TBs)	Ø	Ø	Ø	Ø	Ø	Ø	Ø	2x1	2x1	2x1	2x1	2x1	2x2	2x2
Backup Disk (in TBs)	1x1	2x2	2x3	2x4	4x3	4x4	4x4	8x3	8x4	14x3	16x6	36x3	34x4	34x6
RAID	Ø	1	1	1	10	10	5	1/6	1/6	1/6	1/60	1/60	1/60	1/60
NDMP (EMC, NetApp)	Ø	Ø	Ø	Ø	0	0	0	0	0	0	0	0	0	0
Archiving Controller	201	602	603	604	713S	714S	814S	823S	824S	933S	936S	943S	944S	946S
USB 3.0	✓	✓	✓	✓	Ø	Ø	Ø	Ø	Ø	Ø	Ø	Ø	Ø	Ø
eSATA- 4 Port	Ø	Ø	Ø	Ø	✓	✓	✓	✓	✓	✓	✓	✓	✓	✓
SAS Controller (Disk, Tape)	Ø	Ø	Ø	Ø	Ø	0	0	0	0	0	0	0	0	0
LVD SCSI Controller (Tape)	Ø	Ø	Ø	Ø	Ø	0	0	0	0	0	0	0	0	0
Major Features	201	602	603	604	713S	714S	814S	823S	824S	933S	936S	943S	944S	946S
Adaptive Deduplication™	✓	✓	✓	✓	✓	✓	✓	✓	✓	✓	✓	✓	✓	✓
Heterogeneous – Physical, Virtual, Unified	✓	✓	✓	✓	✓	✓	✓	✓	✓	✓	✓	✓	✓	✓
Cloud Enabled	✓	✓	✓	✓	✓	✓	✓	✓	✓	✓	✓	✓	✓	✓
Replication Target & Cross Replicate	✓	✓	✓	✓	✓	✓	✓	✓	✓	✓	✓	✓	✓	✓
Hot/Cold & Dissimilar Bare Metal	✓	✓	✓	✓	✓	✓	✓	✓	✓	✓	✓	✓	✓	✓
AES-256 Bit Encryption	✓	✓	✓	✓	✓	✓	✓	✓	✓	✓	✓	✓	✓	✓
Instant Recovery (P2V); (V2V); (V2P)	✓	✓	✓	✓	✓	✓	✓	✓	✓	✓	✓	✓	✓	✓
Recovery Assurance for vSphere, Hyper-V, & Windows Physical	0	0	0	0	0	0	0	0	0	0	0	0	0	0

Legend

✓ = Included 0 = Optional Ø = Not available

Recovery Series Appliance Family Specifications

	201	602	603	604	713S	714S	814S	823S	824S	933S	936S	943S	944S	946S
1GB Ethernet Ports	1	1	1	1	1	2	2	2	2	2	2	2	2	2
4x1 GB Ethernet Ports	Ø	Ø	Ø	Ø	Ø	0	0	0	0	0	0	0	0	0
2x10 GB Ethernet	Ø	Ø	Ø	Ø	Ø	0	0	0	0	0	0	0	0	0
1x8 GB Fibre Channel	Ø	Ø	Ø	Ø	Ø	0	0	0	0	0	0	0	0	0
Monitoring & Management	201	602	603	604	713S	714S	814S	823S	824S	933S	936S	943S	944S	946S
Single Pane of Glass	✓	✓	✓	✓	✓	✓	✓	✓	✓	✓	✓	✓	✓	✓
Backup Scheduling	✓	✓	✓	✓	✓	✓	✓	✓	✓	✓	✓	✓	✓	✓
Inclusion/Exclusion Backup	✓	✓	✓	✓	✓	✓	✓	✓	✓	✓	✓	✓	✓	✓
Bandwidth Throttling	✓	✓	✓	✓	✓	✓	✓	✓	✓	✓	✓	✓	✓	✓
Comprehensive Reporting	✓	✓	✓	✓	✓	✓	✓	✓	✓	✓	✓	✓	✓	✓
Alert-Based Monitoring	✓	✓	✓	✓	✓	✓	✓	✓	✓	✓	✓	✓	✓	✓
Platform Characteristics	201	602	603	604	713S	714S	814S	823S	824S	933S	936S	943S	944S	946S
Width (Inches)	8.66	16.80	16.80	16.80	17.20	17.20	17.20	17.20	17.20	17.20	17.20	17.20	17.20	17.20
Height (Inches)	5.12	1.75	1.75	1.75	1.75	1.75	1.75	3.50	3.50	5.20	5.20	7.00	7.00	7.00
Depth (Inches)	13.00	14.00	14.00	14.00	19.80	25.60	25.60	25.50	25.50	25.50	25.50	27.50	27.50	27.50
Unit Weight (Pounds)	14	14	14	14	29	38	38	65	69	90	93	160	160	160
Shipping Weight (Pounds)	16	18	18	18	35	44	44	72	76	97	100	171	171	171
AC Inputs (VAC)	100/ 240	100/ 240	100/ 240	100/ 240	100/ 240	100/ 240	100/ 240	100/ 240	100/ 240	100/ 240	100/ 240	100/ 240	100/ 240	100/ 240
AC Power Consumption (W)	220	200	200	200	350	563	563	740	740	920	920	1400	1280	1280
Redundant Power Supplies	Ø	Ø	Ø	Ø	Ø	Ø	✓	✓	✓	✓	✓	✓	✓	✓
Heat Generated while Operating (BTUs)	90	140	140	140	172	177	177	529	644	871	880	1380	1658	1910
Non-Operating Vibration	350	350	350	350	350	350	350	350	350	350	350	350	350	350
Operating Shock (2ms(Gs))	65	65	65	65	65	65	65	65	65	65	65	65	65	65
Non-Operating Shock (1ms(Gs))	350	350	350	350	350	350	350	350	350	350	350	350	350	350

Legend

✓ = Included 0 = Optional Ø = Not available

Ready to see Recovery Series in action? Attend a [Live Demo](#) and get your questions answered.



About Unitrends

Unitrends delivers award-winning business recovery solutions for any IT environment. The company's portfolio of virtual, physical, and cloud solutions provides adaptive protection for organizations globally. To address the complexities facing today's modern data center, Unitrends delivers end-to-end protection and instant recovery of all virtual and physical assets as well as automated disaster recovery testing built for virtualization. With the industry's lowest total cost of ownership, Unitrends' offerings are backed by a customer support team that consistently achieves a 98 percent satisfaction rating. Unitrends' solutions are also sold through a community of thousands of leading technology partners, service providers, and resellers worldwide.