

Toad for IBM DB2

Simplify and automate DB2 database administration and streamline SQL development and performance

Optimizing SQL prior to deployment can help you prevent costly fixes later. So when it comes to writing applications on DB2, you need a solution that eliminates skills migration challenges and helps produce efficient, high-performance applications.

Toad for IBM DB2 provides you with a proven, intuitive tool that improves productivity and code quality on IBM DB2 Linux, Unix and Windows and DB2 z/OS. And no matter what your IBM DB2 skill level is, you can use this single toolkit for creating and debugging stored procedures, generating SQL and viewing and editing DDL. Toad for IBM DB2 also simplifies script execution and automates basic object management, resulting in shortened development cycles. Skills migration is effortless if you're familiar with Toad on other database platforms. And with Toad's

intuitive, simple-to-use interface, even new Toad users will quickly increase their productivity.

Features

SQL management

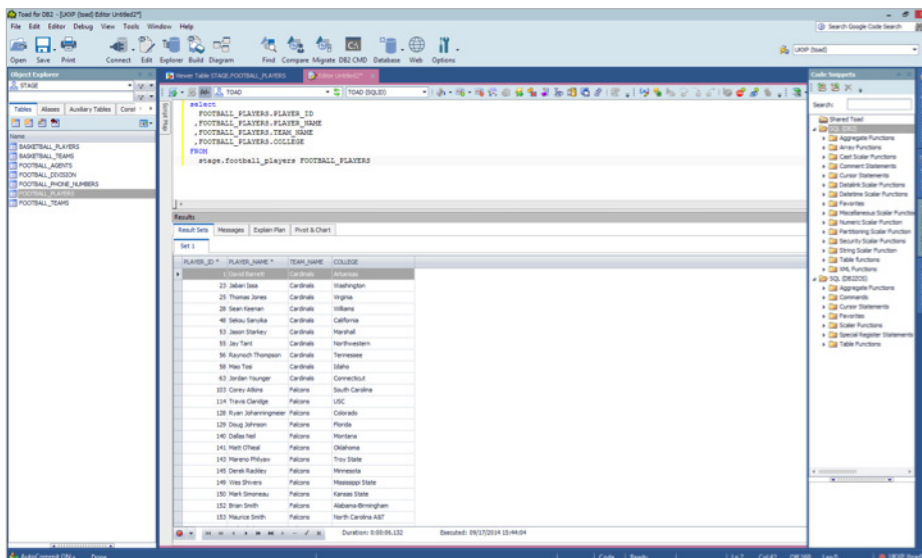
Toad's SQL Editor integrates SQL modeling, so you can visually create SQL queries. Formatting and debugging features provide SQL refinement, while SQL optimization simplifies writing efficient, reliable statements. You can also import data and export query results in a variety of formats, including XML and Excel.

Object management

You can browse, create, clone and alter database objects and permissions via intuitive GUI-based wizards. You can also view advanced object properties and DDL as well as create HTML or PDF schema reports for the objects.

Benefits:

- Reduces the total cost of IBM DB2 ownership
- Provides a common look and feel across database platforms
- Improves SQL quality through automatic optimization
- Enhances data security and reduces the chance of user errors
- Improves productivity via a feature-rich, intuitive graphical user interface
- Integrates seamlessly with our database development lifecycle tools to provide a complete database development solution



SQL editing is fast and easy in Toad for IBM DB2.

System requirements

Supported databases

IBM DB2 for LUW 9.1, 9.5, 9.7, 10.1, 10.5, 10.5.0.5

IBM DB2 for z/OS 9, 10, 11.1

Minimum hardware requirements

1 GHz processor

212 MB of disk space

512 MB of RAM, 1 GB recommended

Operating system

Windows Vista Service Pack 2 (32-bit or 64-bit)

Windows Server 2008 Service Pack 2 (32-bit or 64-bit)

Windows 7 Service Pack 1 (32-bit or 64-bit)

Windows 8 (32-bit and 64-bit)

Windows Server 2012

Additional requirements

Microsoft .NET Framework v4.5 or later

Microsoft Internet Explorer v8.0 or later

Adobe Acrobat Reader v7.0

IBM® DB2® client 9.7.6 through 10.5

Task automation

Toad for DB2 offers several features to help you work more efficiently. Not only does the streamlined workflow help you easily move from one task to another, but you can also automate frequent and repetitive tasks and effortlessly manage projects.

Customizable user interface

Customizable, advanced object filters reduce the time spent navigating through databases by allowing you to show only the objects of interest. There are hundreds of user settings for various display options, such as which windows and object types to show, how SQL is formatted and which data grids are displayed. This allows you to tweak the user interface to suit your workflow. Best of all, these settings are saved, so you don't need to repeat the customization every time you start Toad.

Migration/compare and sync

The migration option allows you to easily move database objects across subsystems or databases. Consistent catalog statistics can also be included in the migration across different environments for effective SQL testing.

The compare-and-sync feature lets you conduct analysis to compare database objects, report on differences, and then synchronize objects across multiple subsystems or databases. This capability applies to reusable global change masks, save/reuse migration projects and statistics migration.

Toad security

As an administrator, you can customize the Toad user interface based on user profiles, so that users have access only to the data they need to work with, thus reducing the chance of manual errors.

Built-in DB2 client and connect

Toad eliminates the need to install DB2 client software and DB2 personal connect.

About Dell Software

Dell Software helps customers unlock greater potential through the power of technology—delivering scalable, affordable and simple-to-use solutions that simplify IT and mitigate risk. This software, when combined with Dell hardware and services, drives unmatched efficiency and productivity to accelerate business results. www.dellsoftware.com.

Dell Software

5 Polaris Way, Aliso Viejo, CA 92656 | www.dell.com
If you are located outside North America, you can find local office information on our Web site.

© 2015 Dell, Inc. ALL RIGHTS RESERVED. Dell, Dell Software, the Dell Software logo and products—as identified in this document—are registered trademarks of Dell, Inc. in the U.S.A. and/or other countries. All other trademarks and registered trademarks are property of their respective owners.
DataSheet-Toad4IBM-US-KS-26696

