



Streamline Access to Complex Data Stores and Manage Them with Ease

The cloud's ability to expand or contract according to service demand is an attractive feature for businesses. And non-relational data stores like Azure Table Services, SimpleDB, Cassandra, and Hadoop have emerged as low-cost solutions to enable the cloud. But the benefits they provide may be offset by the obstacles they present, especially when it comes to non-elastic transactional databases like RAC and SQL Azure.

Programming for these databases is incredibly complex and requires deep expertise. And even after all the effort required for set up, they can be extremely difficult to access.

Get the Data You Need for Faster Results

You deserve an easier way to query NoSQL databases and integrate the data with RDBMSes. Toad® for Cloud Databases dramatically simplifies access and management of non-relational data stored in the cloud. It puts NoSQL databases within reach of RDBMS developers and DBAs—so the critical data your business relies on is back at your fingertips.

Toad for Cloud Databases provides a SQL-based interface that enables querying, data migration and reporting. It allows you to easily browse and edit data, as well as create tables using the SQL language or the familiar Toad graphical interfaces. This Toad solution also allows you to load and export cloud data to a variety of external sources, including RDBMSes.

With Toad for Cloud Databases, you can quickly get to the data you're looking for, so you can get through your work faster and get out of the office on time.

Features

There are two key components of Toad for Cloud Databases: the first is the Toad client, and the second is the Toad data hub.

- **Toad Client** – Contains the intuitive user interface through which remote cloud database access is easily configured and SQL statements are written and executed. It provides all of the standard Toad features and includes:
- **SQL Editor** – for creating, executing, modifying and saving queries as well as viewing and editing data and processing DDL commands.
- **Query Builder** – for constructing the framework for a SQL statement, including selecting tables and views, selecting and joining columns, and adding conditions; it also allows you to query and join data across multiple database platforms.

BENEFITS

- Enables querying, data migration and reporting through the SQL-based interface
- Supports ANSI-standard SQL issued against cloud datasets
- Improves query generation through the query builder
- Allows you to browse data and edit in place
- Creates tables or their logical equivalent
- Provides ability to load and export data to external sources, including RDBMSes
- Supports DML SQL, so you can update, insert and delete statements
- Lets you deploy and manage Amazon EC2 instances with assistance

Supported Platforms

- Amazon SimpleDB
- Microsoft Azure Table Services
- Microsoft SQL Azure
- Apache HBase
- Apache Cassandra
- Apache Hadoop HIVE
- Any ODBC-enabled relational database
- MongoDB

- **Schema Report Generator** – for producing HTML reports of selected databases and objects, including the source code for each object and links that display details for the object when selected.
- **Database Browser** – for displaying and managing all database objects graphically, with single-click access to object details, data, and underlying DDL.
- **Toad Data Hub** – Receives the SQL statements submitted by the user through Toad, translates them into the appropriate API calls to fetch or update data in the designated cloud database, and returns the results in the familiar tabular format of rows and columns. This server is installed with the Toad client and can be run on the local PC or deployed out in the Amazon cloud.

SYSTEM REQUIREMENTS

Platform Memory

1 GHz

512 MB of RAM minimum, 1 GB recommended

Hard Disk Space

550 MB

Operating System

- Windows XP (32-bit)
- Windows Vista (32-bit)
- Windows 7 (32-bit and 64-bit)

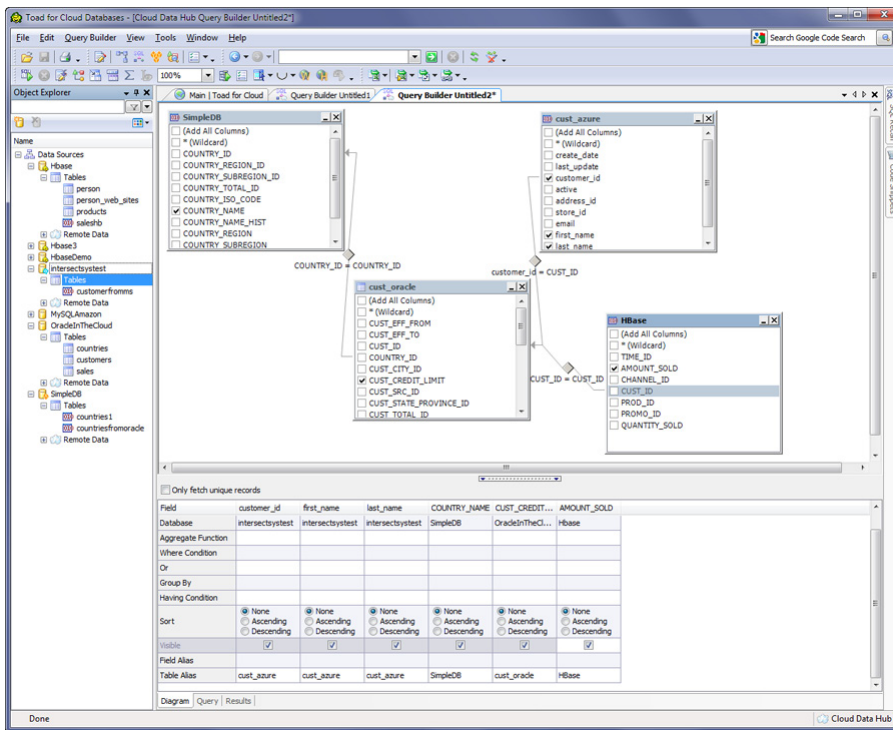
.NET Framework

Microsoft .NET Framework 3.5 (Service Pack 1)

Additional Requirements

Web Browser

Microsoft Internet Explorer 6.0 or later



* Use graphical reporting capabilities to generate business charts and reports from data in the cloud.

About Quest Software, Inc.

Quest Software (Nasdaq: QSFT) simplifies and reduces the cost of managing IT for more than 100,000 customers worldwide. Our innovative solutions make solving the toughest IT management problems easier, enabling customers to save time and money across physical, virtual and cloud environments. For more information about Quest solutions for application management, database management, Windows management, virtualization management and IT management, go to www.quest.com.



5 Polaris Way, Aliso Viejo, CA 92656 | PHONE 800.306.9329 | WEB www.quest.com | EMAIL sales@quest.com

If you are located outside North America, you can find local office information on our Web site.

© 2011 Quest Software, Inc.
ALL RIGHTS RESERVED.

Quest, Quest Software, the Quest Software logo and Toad are registered trademarks of Quest Software, Inc. in the U.S.A. and/or other countries. All other trademarks and registered trademarks are property of their respective owners. DSD-Toad4CloudDB-US-KS-20110613