

Manage Macs with SCCM



Parallels Mac Management for Microsoft SCCM

Extend Mac management beyond native Microsoft® SCCM functionality to discover, enroll, and manage Mac computers the same way you do PCs. Leverage standard reporting, tools, and processes to have full visibility into Mac computers and PCs, all under one pane of glass.

Manage Mac Computers

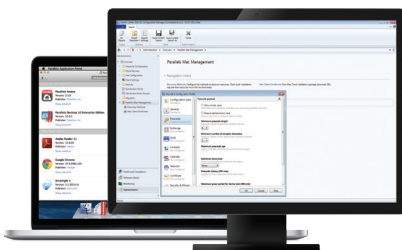
- Automatic and manual discovery and enrollment of Mac computers in SCCM
- Hardware and software inventory
- Deploy software, patches, or scripts
- Enforce compliance via OS X® configuration profiles
- Application portal for Mac users
- Enable FileVault® 2 full disk encryption
- Bare-metal OS X image deployment
- Remote assistance via VNC and SSH
- Compatible with OS X Yosemite

Manage Parallels Desktop

- Deploy Parallels Desktop® for Mac Business Edition and virtual machines
- Manage Parallels Desktop and virtual machine settings

System Requirements

- SCCM 2012 and 2012 R2 with latest service pack and updates
- OS X 10.6.8 or newer



Feature	Parallels Mac Management	SCCM 2012 R2
Discovery and Enrollment		
Network discovery and automatic enrollment	●	
Manual enrollment	●	●
Inventory		
Hardware and software inventory	●	●
Show AppleCare warranty status	●	
Compliance		
Deploy OS X configuration profiles	●	
Easy-to-use OS X configuration profile editor	●	
Push scripts as SCCM configuration items	●	●
Enable FileVault 2 encryption	●	
Escrow and retrieve FileVault 2 personal keys	●	
Software and Patch Deployment		
Deploy software via SCCM package deployment	●	
Deployment software via SCCM application deployment	●	●
Self-service application portal for Mac computers	●	
Silent and interactive deployment modes	●	
OS X images via SCCM		
Deploy OS X images via SCCM	●	
Remote Assistance		
Remote assistance via VNC	●	
Remote assistance via SSH	●	
Configuration		
Works without PKI infrastructure	●	
Easy troubleshooting via Problem Reporting	●	

“System Center Configuration Manager is designed for extensibility, and Parallels Mac Management for Microsoft SCCM was built to help expand and enhance System Center’s management of Macs in enterprise environments. A single team with one set of tools can use Parallels Mac Management and help decrease redundancies and reduce OPEX costs.”

—Andrew Conway, Senior Director of Product Marketing, Microsoft



For more information, go to www.parallels.com/products/mac-management

© 2015 Parallels IP Holdings GmbH. All rights reserved.

