

Foglight for Storage Management

Monitor physical storage for optimal virtualization performance.

Achieving optimal performance for your virtual servers is easy when you have complete visibility into your critical storage subsystems. Foglight for Storage Management (formerly vFoglight Storage) combines information from storage arrays and fabrics with the information available from VMware and Hyper-V to provide unified data analysis from the virtual machine (VM) down to the physical disk spindle.

Foglight for Storage Management delivers the full view of virtualization performance by:

- Uncovering when VM performance issues are originating within storage hardware

- Identifying which VMs will be impacted by storage issues or planned storage hardware maintenance
- Exposing physical storage capacity as a component of VM performance
- Allowing the virtualization administrators and the storage administrators to troubleshoot from a single pane of glass

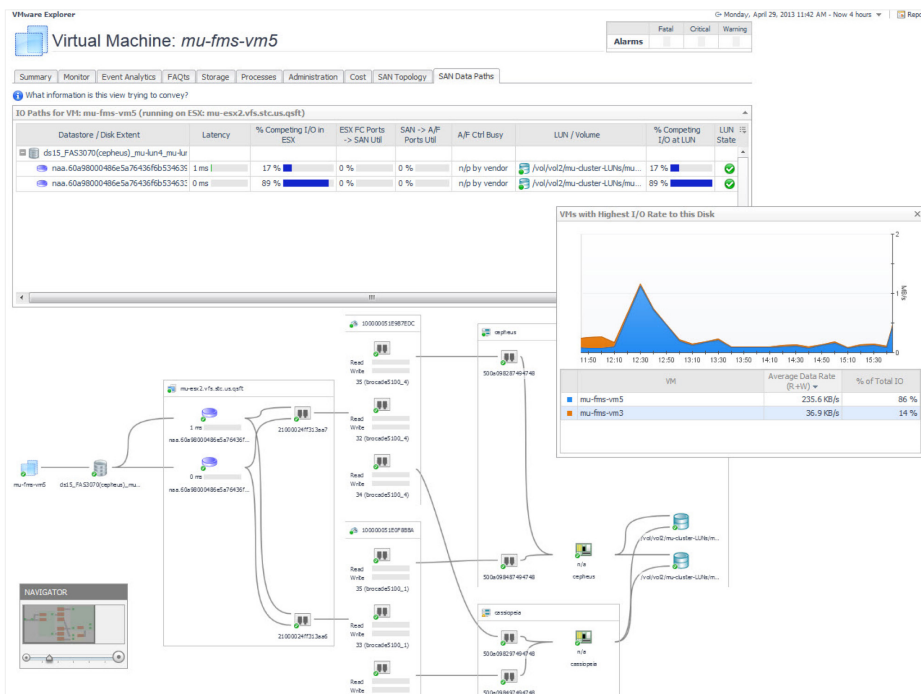
FEATURE HIGHLIGHTS

Uncover storage issues impacting VMs Determine whether VM performance issues are originating in the host, fabric or storage array. Drill down into the specific metrics of each target device for granular detail about current or historical performance issues to pinpoint the root cause of a given degradation. Foglight

Foglight for Storage Management combines information from VMware and Hyper-V to provide unified data analysis from the VM to the physical disk spindle.

BENEFITS:

- Reveals the virtual machine-to-physical disk topology of the physical storage hardware supporting logical datastores
- Identifies and remedies VM performance issues that originate within physical storage with one-click troubleshooting
- Provides granular performance monitoring and alerting for the entire storage datapath
- Monitors the amount of available storage capacity for heterogeneous storage environment from a single pane of glass
- Provides actionable insights for storage optimization to control operational expenditures (OPEX) and capital expenses (CAPEX)



Gain visibility behind your logical datastores and into the physical storage hardware that feeds your virtual environment.

MINIMUM REQUIREMENTS (SMALL ENVIRONMENT)

OPERATING SYSTEM

Windows Server 2008 x64
or higher

SUSE Linux 11 x64 or higher

RHEL Linux 6 x64 or higher

CentOS Linux 7 x64 or higher

Ubuntu Linux 14.04 LTS x64
or higher

HARDWARE PLATFORM

CPU: 2.4GHz CPU(s) with eight
cores total

Storage: 250GB

RAM: 20GB

Network: 100 BaseT
minimum with GBit network
recommended

INTEGRATION

Foglight for Virtualization
Management, Enterprise
Edition

Microsoft Active Directory
Performance Monitoring
Cartridge

Microsoft Exchange
Performance Monitoring
Cartridge

Foglight Application
Performance Monitoring

Foglight for Database
Performance

for Storage Management delivers end-to-end virtual infrastructure monitoring with logical visualization to help identify bottlenecks in the storage topology that are impacting VM performance.

Recognize which VMs are affected by storage hardware devices

By identifying which VMs will be affected by maintenance or technical issues with individual storage components, Foglight for Storage Management allows you to plan ahead and take action to prevent downtime for your VMs. You can also see which components are connected downstream all the way to the physical disk, and assess how much I/O is passing through each piece of hardware. This visibility allows you to alert system administrators when issues, changes or maintenance events in storage will impact application performance.

Visualize how storage capacity is related to VM performance

Proactive scrutiny of physical storage hardware allows for increased uptime by preventing a lack of available storage on overcommitted storage pools and aggregates. To extract the best mix of performance and efficient utilization from thinly provisioned datastores, it is critical that a deep view of the underlying subsystems be included in the overall virtualization strategy. Foglight for Storage Management will also analyze your storage consumption patterns to estimate when available capacity will be depleted so you can proactively plan new disk purchases.

Identify a single version of the truth, via a single pane of glass

Providing a unified and logical end-to-end view of the virtualization infrastructure gives you and other administrators across multiple areas of responsibility the data needed to understand how separate systems impact overall VM performance. Foglight for Storage Management helps identify storage bottlenecks, provides clear reporting related to which VMs will be impacted by storage issues, proves the origin of VM performance issues, and delivers one-click troubleshooting to

identify and remediate those problems. This clear and linear visualization, from the VM to the physical disk, puts an end to the performance monitoring blame game.

How Foglight for Storage Management works

Foglight for Storage Management collects information from the hypervisor (VMware or Hyper-V) and the storage hardware itself. This data is fed into an analytics engine which gains insight across the entire virtual environment to:

- Profile the chain of hardware linking the VM or physical host to disk
- Compare utilization data to allocated VM resources at the datastore level
- Detect bottlenecks residing in any hardware component in the storage infrastructure
- Identify how VMs are contributing to the workload on the storage infrastructure
- Detect datastores and physical storage components that are running out of availability

Foglight infrastructure solutions

Foglight for Storage Management is part of the Foglight infrastructure family of products. Capabilities include monitoring, configuration management, planning, optimization, reporting and chargeback in virtual environments and cloud deployments.

ABOUT QUEST SOFTWARE

Quest helps our customers reduce tedious administration tasks so they can focus on the innovation necessary for their businesses to grow. Quest® solutions are scalable, affordable and simple-to-use, and they deliver unmatched efficiency and productivity. Combined with Quest's invitation to the global community to be a part of its innovation, as well as our firm commitment to ensuring customer satisfaction, Quest will continue to accelerate the delivery of the most comprehensive solutions for Azure cloud management, SaaS, security, workforce mobility and data-driven insight.

Quest

4 Polaris Way, Aliso Viejo, CA 92656 | www.quest.com
If you are located outside North America, you can find local office information on our Web site.

© 2016 Quest Software, Inc. ALL RIGHTS RESERVED. Quest and the Quest logo are trademarks and registered trademarks of Quest Software Inc. For a complete list of Quest marks, visit www.quest.com/legal/trademarks.aspx. All other trademarks and registered trademarks are property of their respective owners.
DataSheet-Foglight4StorageMgmt-US-KS-24037

Quest