

Enterprise Reporter for SQL Server

SQL Server security discovery, reporting and change auditing

Microsoft® SQL Server® administrators today have a broad range of responsibilities, including achieving and maintaining IT compliance and fulfilling requests for information about the security configuration of SQL servers. On a daily basis, they must answer questions like the following:

- What roles, users and logins are set across all SQL databases?
- Who has administrative access to each SQL Server?
- How does the configuration of each SQL Server change over time?

Only one solution identifies the current and historical configuration of SQL Server security to help administrators answer these questions. Enterprise Reporter for SQL Server provides visibility into SQL Server security configuration, including

databases, users and logins, roles and database object permissions. Armed with this information, organizations can perform change audits and security assessments — enabling informed strategic planning and proactive management of the IT infrastructure.

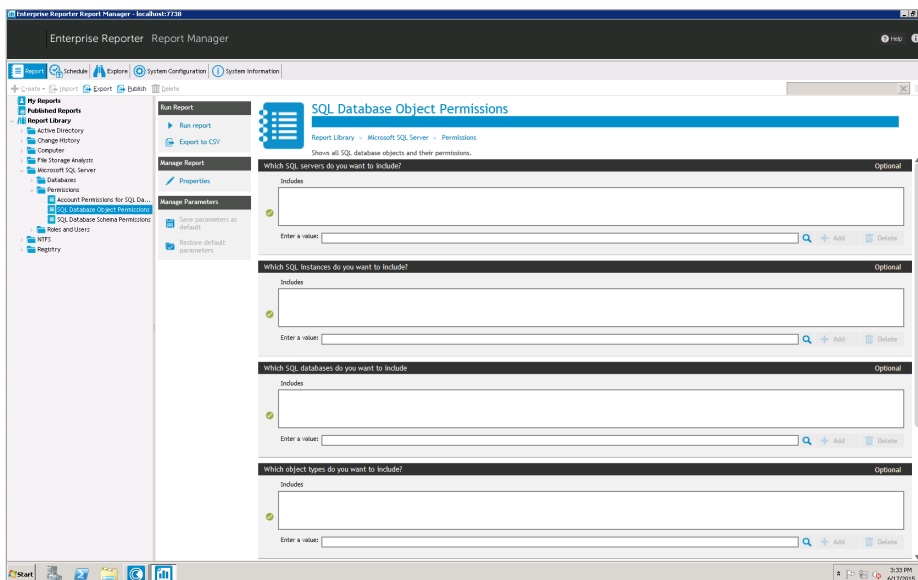
FEATURES

- **Compliance and security visibility** — Gain visibility into configuration of critical SQL servers to comply with security best practices, internal policies and external regulations, and ensure SQL Server database security.
- **Change history** — Capture historical configuration information on database objects and view detailed change history reports. Gain in-depth insight for historical analysis and compliance reporting.

Enterprise Reporter for SQL Server provides automated discovery and reporting on the security configuration of SQL servers for security assessment and change auditing processes.

BENEFITS:

- Delivers automated discovery and reporting on the security configuration of SQL servers for improved SQL Server database security
- Enables effective change review and SQL Server file audit by capturing the historical configuration of SQL servers and providing detailed change history reports
- Collects and reports on permissions to SQL databases, users, roles and logins for comprehensive and effective SQL Server permission reporting
- Is scalable, secure and customizable to support large and complex SQL Server environments with multiple groups of report consumers



Enterprise Reporter for SQL Server reports on database users, groups and permissions to database objects.


SYSTEM REQUIREMENTS

For complete system requirements, please visit quest.com/products/enterprise-reporter-for-sql-server.

- **Permission reporting** — Collect and report on permissions to SQL databases, users, roles and logins for comprehensive SQL Server permission reporting.
- **Scalable data collection** — Scale to SQL Server environments of any size. Schedule collections during off-peak hours to minimize the impact of data collection on network and server performance, and leverage distributed collection architecture for load balancing.
- **Efficient storage** — Reduce database storage requirements and save more change history data by comparing SQL Server discoveries and storing only the changes.
- **Separation of duties (SoD)** — Honor departmental and business function boundaries by letting auditors, help desk and IT managers get exactly the reports they asked for.
- **Customizable reports** — Use predefined reports in multiple formats, including PDF, HTML, MHT, RTF, XLS, XLSX, CSV, text and images. Create customized reports with added attributes and advanced filtering for easy SQL Server ad hoc reporting. Perform efficient, effective data analysis and satisfy the unique informational needs of your organization.
- **Automated reporting workflows** — Automate report generation and delivery for multiple report consumers according to different schedules.
- **Common reporting portal** — Export reports to Knowledge Portal for a unified reporting interface across the entire family of Quest compliance and IT governance solutions.

ABOUT QUEST

Quest helps our customers reduce tedious administration tasks so they can focus on the innovation necessary for their businesses to grow. Quest® solutions are scalable, affordable and simple to use, and they deliver unmatched efficiency and productivity. Combined with Quest's invitation to the global community to be a part of its innovation, as well as our firm commitment to ensuring customer satisfaction, Quest will continue to accelerate the delivery of the most comprehensive solutions for Azure cloud management, SaaS, security, workforce mobility and data-driven insight.

|  SQL Database Users | | | |
|---|-----------|------------|---|
| Shows all SQL database users. If you choose to expand groups, membership of the groups is displayed. | | | |
| SQL Server: TRACEY-PARIS.WORLDWIDE-TRACEY.DEV.HAL.CA.QSFTMSSQLSERVER | | | Last Collected: 17-Jun-2015 03:44 PM |
| Database Name: dbReporter | | | |
| User Name | User Type | Login Name | Login Type |
| dbo | | | |
| guest | None | | |
| INFORMATION_SCHEMA | None | | |
| Reporter_Discovery_Admins | | | |
| Reporter_Exploring_Operators | | | |
| Reporter_Reporting_Admins | | | |
| Reporter_Reporting_Operators | | | |
| sys | None | | |

Enterprise Reporter for SQL Server reports on both local and Active Directory-integrated database logins.

Quest

4 Polaris Way, Aliso Viejo, CA 92656 | www.quest.com
If you are located outside North America, you can find local office information on our Web site.

© 2017 Quest Software, Inc. ALL RIGHTS RESERVED. Quest and the Quest logo are trademarks and registered trademarks of Quest Software Inc. For a complete list of Quest marks, visit www.quest.com/legal/trademarks.aspx. All other trademarks and registered trademarks are property of their respective owners.
DataSheet-EnterpriseReporter4SQLServer-US-KS-25735

