

Enterprise Reporter for Active Directory

Active Directory discovery, reporting and auditing

Microsoft® Active Directory® administrators today have a broad range of responsibilities, including supporting Active Directory migration, achieving and maintaining IT compliance, and fulfilling requests for information about the configuration of Active Directory. On a daily basis, they must answer questions like the following:

- Who can do what in my Active Directory?
- What users, groups and computers exist in Active Directory?
- What user accounts can be safely deleted before migrating to a new domain?
- How does group membership change over time for domain local and global groups?

Only one solution identifies the current and historical configuration of Active Directory to help administrators answer

these questions and ensure Active Directory security. Enterprise Reporter for Active Directory provides visibility of users, groups, organizational units (OUs), permissions and other Active Directory configuration.

Armed with this information, organizations can perform change audits, security assessments, and pre- and post-migration analyses, thereby enabling informed strategic planning and proactive management of the IT infrastructure.

FEATURES

- **Compliance and security visibility** — Gain visibility into configuration of critical IT assets in Active Directory domains. This comprehensive Active Directory reporting enhances compliance with security best practices, internal policies and external regulations, and ensures Active Directory security.

BENEFITS:

- Delivers automated discovery, reporting and auditing on the configuration of Active Directory
- Enhances security and compliance by increasing visibility into Active Directory configuration
- Provides pre-migration analysis to facilitate a smooth domain migration or consolidation project
- Enables effective change review and Active Directory audits by capturing the historical configuration of Active Directory and providing detailed change history reports
- Is scalable, secure and customizable to support large and complex Microsoft® Windows® environments with multiple groups of report consumers

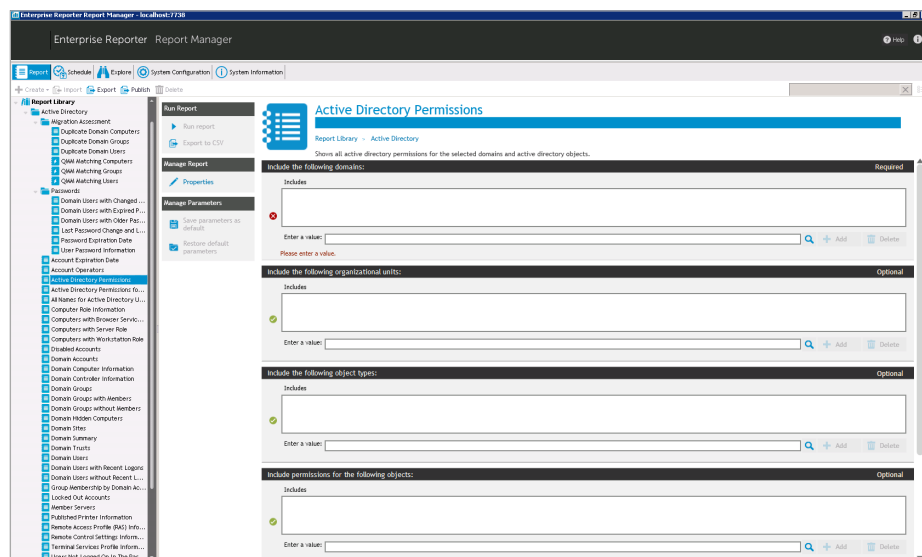


Figure 1: Enterprise Reporter for Active Directory reports on users, groups, group memberships, permissions and other critical objects residing in domains and forests.

SYSTEM REQUIREMENTS

For complete system requirements, please visit quest.com/products/enterprise-reporter-for-active-directory.

- **Pre-migration assessment** — Ensure a smooth domain migration or consolidation project by pinpointing user and group dependencies, matching conflicts and unused accounts before the migration starts.
- **Delegated rights reporting** — Ensure appropriate Active Directory delegation by reporting on who has access to Active Directory domains and OUs, users, groups and computers.
- **Change history** — Capture historical configuration information on users, groups, OUs and permissions, and view detailed change history reports. Gain in-depth insight for historical analysis and compliance reporting.
- **Scalable data collection** — Scale to Active Directory environments of any size and geographic distribution. Schedule collections during off-peak hours to minimize the impact of data collection on network and server performance, and leverage distributed collection architecture for load balancing.
- **Efficient storage** — Reduce database storage requirements and save more change history data by comparing Active Directory domain discoveries and storing only the changes.
- **Automated reporting workflows** — Automate report generation and delivery for multiple report consumers according to different schedules.
- **Separation of duties (SoD)** — Honor departmental and business function boundaries by letting auditors, help desk and IT managers get exactly the reports they asked for, ensuring secure and effective Active Directory audits.
- **Customizable reports** — Use predefined and customizable reports with advanced filtering and multiple formats (including PDF, HTML, MHT, RTF, XLS, XLSX, CSV, text and images) to enable effective data analysis that meets the unique informational needs of your organization.
- **Common reporting portal** — Export reports to Knowledge Portal for a unified reporting interface across the entire family of Quest compliance and IT governance solutions.

ABOUT QUEST

Quest helps our customers reduce tedious administration tasks so they can focus on the innovation necessary for their businesses to grow. Quest® solutions are scalable, affordable and simple to use, and they deliver unmatched efficiency and productivity. Combined with Quest's invitation to the global community to be a part of its innovation, as well as our firm commitment to ensuring customer satisfaction, Quest will continue to accelerate the delivery of the most comprehensive solutions for Azure cloud management, SaaS, security, workforce mobility and data-driven insight.

User	Last Logon Timestamp	Number of Logons	Is Disabled	Is Locked
Domain: worldwide-tracey.dev.hal.ca.qstf Last Collected: 17-Jun-2015 03:33 PM				
Organizational Unit: worldwide-tracey.dev.hal.ca.qstf/RahilOU				
WORLDWIDE-TRACEInayadaur		0	<input type="checkbox"/>	<input type="checkbox"/>
WORLDWIDE-TRACEIpass1	04/17/2012 10:26:52 AM	0	<input type="checkbox"/>	<input type="checkbox"/>
WORLDWIDE-TRACEIpass2		0	<input type="checkbox"/>	<input type="checkbox"/>
WORLDWIDE-TRACEIpass3		0	<input type="checkbox"/>	<input type="checkbox"/>
WORLDWIDE-TRACEIpass4		0	<input type="checkbox"/>	<input type="checkbox"/>
Organizational Unit: worldwide-tracey.dev.hal.ca.qstf/Angela OU				
WORLDWIDE-TRACEI01234567890123456789		0	<input type="checkbox"/>	<input type="checkbox"/>
WORLDWIDE-TRACEIAngela\$		0	<input type="checkbox"/>	<input type="checkbox"/>

Figure 2: Enterprise Reporter for Active Directory can detect stale user accounts that have not recently logged on.

Quest

4 Polaris Way, Aliso Viejo, CA 92656 | www.quest.com
If you are located outside North America, you can find local office information on our Web site.

© 2017 Quest Software, Inc. ALL RIGHTS RESERVED. Quest and the Quest logo are trademarks and registered trademarks of Quest Software Inc. For a complete list of Quest marks, visit www.quest.com/legal/trademarks.aspx. All other trademarks and registered trademarks are property of their respective owners.
DataSheet-EnterpriseReporter4AD-US-KS-25732

Quest