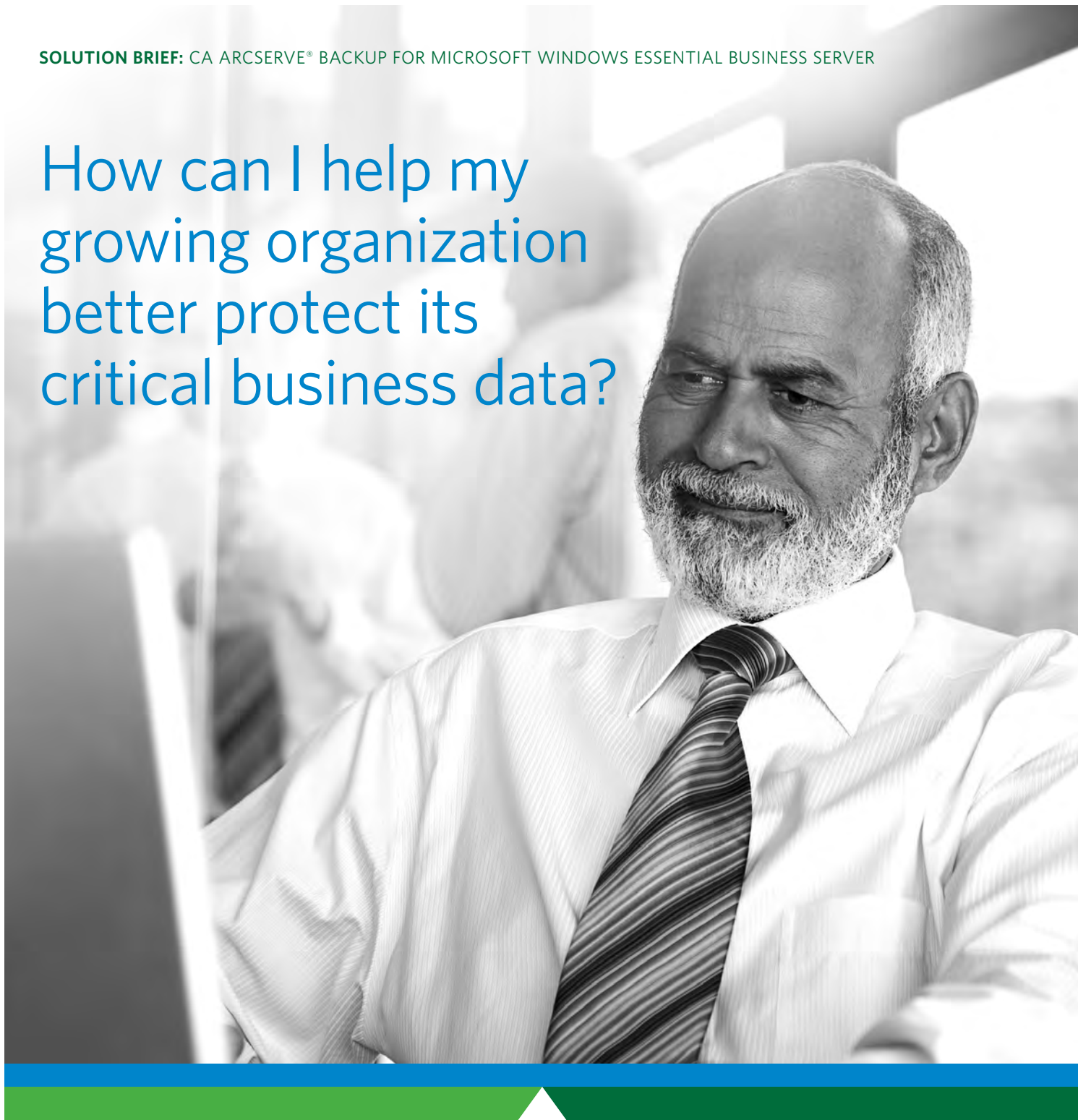


How can I help my  
growing organization  
better protect its  
critical business data?



The background of the slide is composed of several large, overlapping triangles in various shades of green and blue. The top-left corner is a dark green triangle. A medium green triangle extends from the top-right towards the center. A light green triangle is in the bottom-right. A bright blue triangle is in the bottom-left. A small, darker blue triangle is located on the left edge, partially overlapping the medium green triangle.

CA ARCserve® Backup for Microsoft  
Windows Essential Business Server (EBS)  
simplifies the process of providing ongoing  
protection and recoverability for your most  
critical information assets.

# Overview

---

## Challenge

Growing mid-size organizations looking to survive in today's competitive marketplace require the performance and security of a multi-server computing environment to support their changing business needs. However, implementing a solution that is capable of protecting critical business information without driving operating costs out of scope is a goal that many companies struggle to achieve.

## Solution

CA ARCserve® for Windows EBS is specifically designed to meet the unique data protection requirements of the multi-server computing environment. The solution combines data protection for Microsoft Windows Server 2008, Exchange Server and SQL Server with robust disaster recovery (DR) capabilities that simplify ongoing data protection efforts through integration with the Windows EBS Administration Console.

## Benefits

CA ARCserve for Windows EBS not only simplifies your choice for data protection, but it also helps you align functionality and cost. Integration with the Windows EBS Administration Console allows you to better monitor and manage your data protection and DR tasks, without requiring extensive knowledge of the multi-server Windows EBS environment.

---

## The CA Advantage

CA ARCserve for Windows EBS is built on the award-winning technology of CA ARCserve® Backup r12, which delivers some of the most comprehensive data protection functionality available today. Centralized management capabilities and tight integration with the Windows EBS Administration Console allow IT administrators to configure and monitor their entire backup environment from a single interface, helping save both time and resources. Simplified device configuration and intuitive agents and options allow for the effective creation and monitoring of backup and restore tasks, including disaster recovery and business continuity (BC) activities.

Plus, both CA and Microsoft have extensive partner networks that provide the expertise to assist in the procurement and implementation of these technologies.

---

## Next Steps

CA ARCserve for Windows EBS provides comprehensive data protection that helps mid-size organizations running the Windows EBS environment minimize costs and mitigate risk by simplifying the process of protecting a multi-server environment.

To learn more about CA ARCserve for Windows EBS, visit [ca.com/rm](http://ca.com/rm).

For information about local CA resellers, visit [ca.com/contact/rmdm](http://ca.com/contact/rmdm).

## Protecting Growing Data Volumes in an Expanding Environment

Organizations looking to drive business growth are often confronted by an expanding amount of mission-critical data assets that must be protected to ensure the productivity of internal and external workers alike. To this end, Microsoft designed Windows EBS for the express purpose of helping organizations address their data protection challenges by simplifying the implementation of a distributed computing environment. While the performance, reliability and security of Windows EBS makes it a useful tool for expanding operations, organizations must still focus on meeting system and data recovery objectives, which also become increasingly complex as growth accelerates.

But, understanding how to cost effectively protect and recover different types of data becomes very challenging — especially in a Windows EBS environment characterized by multiple servers and applications — each with unique data sets requiring specific protection and recovery methods.

### Protecting Windows EBS Environments

Organizations operating Windows EBS must maintain an environment that contains such mission-critical information assets as:

- Windows Server and data configurations, including the main Windows operating system and all user data
- Microsoft Exchange Server and all enterprise messaging-related items, including emails, tasks, schedules, attachments, contacts and more
- Microsoft SQL Server database and its expanding and evolving library of business data

Moreover, growing organizations need to ensure the availability of these systems and all related data on a daily basis, while providing effective protection for ongoing recoverability for situations such as:

- Reacting to unplanned disruptions, including errors, hardware failures, theft and natural disasters
- Meeting compliance requirements from a variety of regulatory bodies
- Recovering lost data or restoring to a previous state following routine maintenance or planned downtime

## CA ARCserve for Windows EBS: Comprehensive Data Protection

CA ARCserve for Windows EBS is designed specifically for the Windows EBS environment. As such, it simplifies the process of determining what technology is needed to protect your critical business data and information assets. The agents and options within the solution provide intuitive wizards and management interfaces that help you create and manage the jobs that protect your Windows EBS environment, as well as intuitive application-level information for Exchange Server and SQL Server.

### Key Components of CA ARCserve for Windows EBS

CA ARCserve for Windows EBS unites all of the technology needed to effectively protect and recover a Windows EBS environment. This solution leverages proven CA ARCserve Backup technology — the most robust CA ARCserve Backup release yet — to centralize and simplify data protection tasks in a multi-server Windows environment. Improved user interface controls and navigation in the CA ARCserve Backup Central Management Option, combined with agents that present detailed operating system and application information during backup and restore processes, allow these tasks to be easily performed by users with only a basic understanding of Windows, Exchange Server and SQL Server. Additionally, the Disaster Recovery Option leverages capabilities in the Windows 2008 operating system, simplifying the implementation of a DR strategy and providing automated recovery steps that help quickly rebuild an entire server when needed.

CA ARCserve for Windows EBS leverages the following CA ARCserve components:

**CA ARCSERVE BACKUP FILE SERVER** Provides backup file server access to the storage devices protecting local and remote data.

**WINDOWS CLIENT AGENT** Resides on each individual server in the Windows EBS environment to help protect the Windows operating system.

**OPEN FILE AGENT** Resides on each individual server to provide effective protection for frequently accessed files.

**DISASTER RECOVERY OPTION** Allows for the creation of boot and recovery media on the CA ARCserve Backup server and automates each step of the server recovery process.

**EXCHANGE SERVER AGENT** Operates on the Windows EBS Messaging Server and Windows EBS Security Server to allow for recovery of a single email message or entire Exchange Server environment.

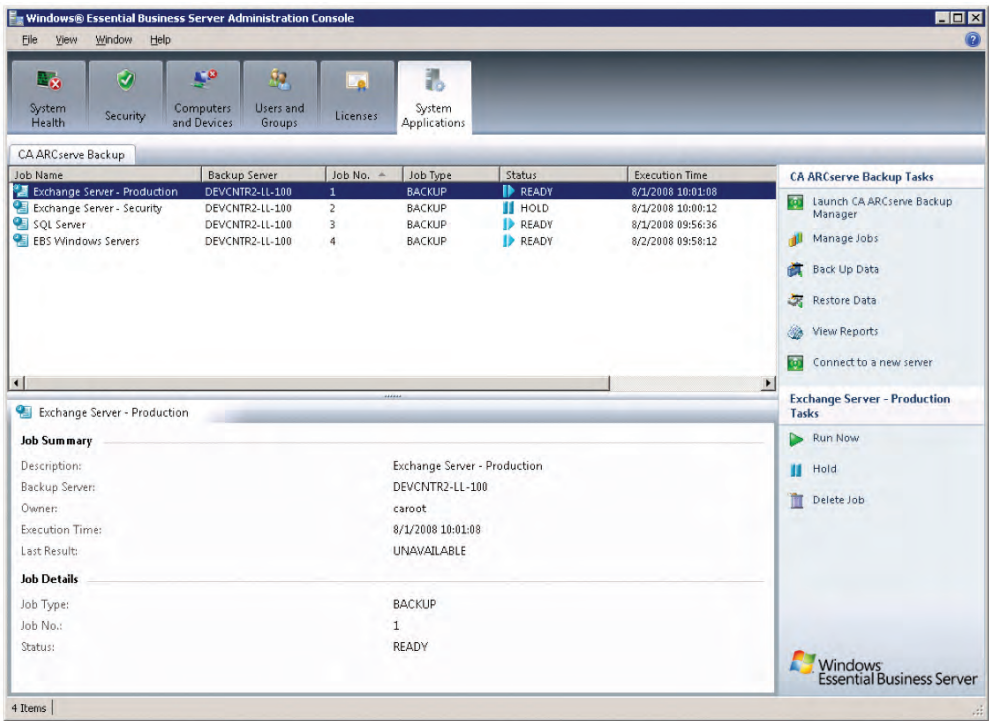
**SQL SERVER AGENT** Operates on the Windows EBS Premium Database server and is easily configured to protect and recover an individual database or the entire SQL Server environment.

This functionality is further complemented by a host of actionable reporting tools that offer detailed status of jobs and resources, as well as information that can be used to identify trends and drive a proactive approach to data protection.

FIGURE A

CA ARCserve for Windows EBS adds a tab to the Windows EBS Administration Console that displays the status of all backup and restore jobs. Additionally, tasks such as backup, restore and reporting are easily initiated from this interface.

WINDOWS ESSENTIAL BUSINESS SERVER ADMINISTRATION CONSOLE



### SECTION 3: BENEFITS

## Integrated Data Protection and Simplified Management Delivers Greater Control

Controlling cost is important to almost any organization. However, when it comes to choosing data protection technology, budget shouldn't be the only factor guiding your decision. Rather, it is important to consider the total cost of your IT spending versus the cost of lost data and then determine the best-fit solution for your needs. To this end, CA ARCserve for Windows EBS offers a single point of contact for addressing your data protection requirements, while helping you maintain a low TCO.

Specifically, CA ARCserve for Windows EBS can help you:

- Maximize the value of your recovery technology
- Improve the management of your Windows EBS environment
- Provide proactive data protection and recoverability

### **Maximize the Value of Your Recovery Technology**

CA ARCserve for Windows EBS integrates all of the components, capabilities and functionality necessary for providing complete data protection and recoverability for your multi-server Windows EBS environment. As a centralized solution, CA ARCserve for Windows EBS helps to ensure the integrity and availability of your most mission-critical data assets from a single source that reduces risks without increasing costs.

### **Improve the Management of Your Windows EBS Environment**

The integration of CA ARCserve with the Windows EBS console allows all backup management processes to be performed from within the Windows EBS Administration console. With a central point from which to stage, track and report on all backup- and recovery-related administrative tasks, CA ARCserve for Windows EBS offers greater visibility in your data protection processes and delivers greater control over your Windows EBS environment.

### **Provide Proactive Data Protection and Recoverability**

CA ARCserve for Windows EBS simplifies the process of determining the proper options and agents needed to effectively install and protect your Windows EBS environment through intuitive wizards that help you easily create and manage backup jobs. And as your organizations grow and data protection challenges evolve, you can leverage these tools to help you keep pace with changing recoverability needs.

---

## **SECTION 4: THE CA ADVANTAGE**

CA has leveraged its partnership with Microsoft to help create a comprehensive backup solution designed to address the specific needs of growing mid-size organizations operating a Windows EBS environment.

CA understands the demands that recovery management can present to emerging companies, and believes that, by simplifying the choice of a data protection solution for Windows EBS, organizations can streamline the process of data protection and free up more time and resources to address core business goals.

In addition, CA and Microsoft have prepared their partners to offer the information and services that can ease the implementation their complementary solutions. Early adopters of these technologies provided valuable feedback that helped both CA and Microsoft develop best practices that ensure the delivered combination of functionality and affordability growing organizations require. Moreover, CA's technical support provides a global network of people, systems and services dedicated to keeping your solution operating at its peak efficiency.

CA delivers enhanced value through additional application and infrastructure support that helps you meet the evolving challenges that emerge as your company grows. Whether you are considering bolstering your recovery capabilities through integration with CA ARCserve Backup, CA XOsoft™ Replication or CA XOsoft™ High Availability, CA's data protection solutions offer efficient implementations and easy manageability.

---

## SECTION 5: NEXT STEPS

Your business data is too important to risk. If, when evaluating your organization's IT needs, you determine that security, performance and recoverability are among your most pressing challenges, consider implementing CA ARCserve for Windows EBS. It will help you ensure that you have the data protection and recovery capabilities in place to secure your business now and in the future.

---

To learn more, and see how CA software solutions enable other organizations to unify and simplify IT management for better business results, visit [ca.com/rm](https://ca.com/rm) or [ca.com/contact/rmdm](https://ca.com/contact/rmdm).



CA (NSD: CA), one of the world's leading independent, enterprise management software companies, unifies and simplifies complex information technology (IT) management across the enterprise for greater business results. With our Enterprise IT Management vision, solutions and expertise, we help customers effectively govern, manage and secure IT.

333281108

---

Learn more about how CA can help you  
transform your business at **ca.com**

