



BLACKBERRY ENTERPRISE PORTFOLIO



WELCOME TO THE END OF MOBILE COMPROMISE

SERIOUS MOBILITY FOR SERIOUS BUSINESS

 **BlackBerry** | **ENTERPRISE**

BLACKBERRY IN THE ENTERPRISE

MOBILITY.
PRODUCTIVITY.
COMMUNICATION.
COLLABORATION.
CROSS-PLATFORM.
IDENTITY.
POSSIBILITIES. SECURED.

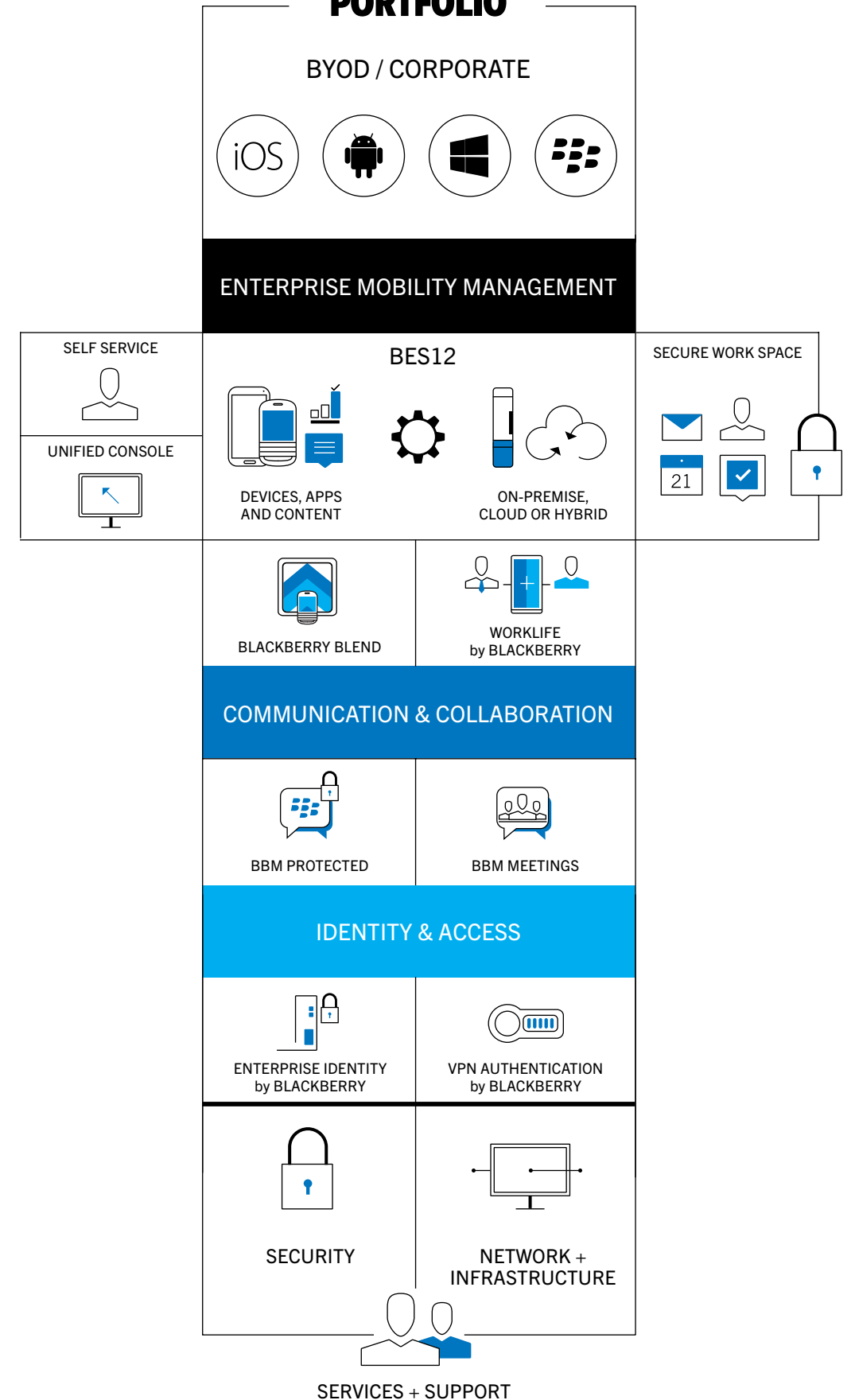
The world is connected in ways we have never before imagined, driving the pace of innovation and business at unprecedented levels. But with this new reality comes new complexities and security risks that threaten the viability and reputation of businesses. That's why, at BlackBerry®, our cross-platform mobility solutions extend far beyond simply managing devices. We are completely redefining business productivity and pushing the boundaries to deliver on the vision of a truly connected and secured global enterprise.



CHANGING THE PARADIGMS OF MOBILITY

The BlackBerry® Enterprise portfolio of cross-platform, mobility-first solutions is designed to enhance productivity, secure critical data, and unify management in a way that only BlackBerry can deliver. This portfolio defines new levels of productivity, sets new standards for secure communication, and enables seamless access to data and applications behind the firewall or in the cloud, across any mobile endpoint. All through an integrated, cross-platform command center built from the bottom up to secure your enterprise.

BLACKBERRY ENTERPRISE PORTFOLIO





ENTERPRISE MOBILITY MANAGEMENT (EMM)

BES12, a cross-platform EMM solution by BlackBerry, is your command and control center for the secured enterprise and is at the core of the BlackBerry® Enterprise Mobility Management solution. It's the only solution you need to manage mobility in your organization across iOS, Android™, Windows® Phone and BlackBerry devices, from permission, policies and protection for individuals and groups, to endpoints, applications, activity and critical data. BES12 can be deployed on-premise, in the cloud or as a hybrid.

Comprehensive EMM

Whether you want to manage a single, hardened, connected endpoint or allow personal device usage, BES12 gives you control over the availability and usage of devices, apps, activities and critical data through flexible deployment models (BYOD/COPE/COBO).

End-to-end security

BlackBerry security is trusted by more leading enterprises and governments around the world than any other provider. BES12 uses encryption, containerization and BlackBerry's secure infrastructure to lock down your critical data on-device and in-transit, while still maintaining the highest levels of user productivity.

Enterprise mobility ecosystem

BES12 is the central nervous system that brings together mobile devices, applications, cloud services, and carrier services to consolidate and manage your business workflows within one of the most secure and extensible mobility ecosystems on the planet.



EMM: SOLUTIONS DESIGNED FOR PRODUCTIVITY

BlackBerry offers the most extensive set of proven EMM solutions designed to connect employees to the data, apps, services and people they need to communicate and be more productive, wherever they are.



BLACKBERRY BLEND

Employees can now experience the power of BlackBerry across device platforms. BlackBerry® Blend securely brings the messaging and content that's on their BlackBerry smartphone and behind the firewall to computers and tablets, increasing productivity and simplifying IT administration.



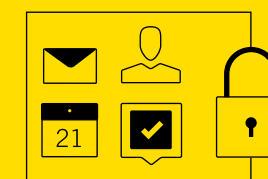
Enterprise app ecosystem

We have a comprehensive portfolio of BlackBerry-approved partner solutions and productivity applications for the mobile enterprise. These best-in-class secured apps extend our software ecosystem, providing you with the solutions you need to extend key data and systems to your mobile workers.



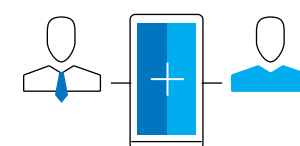
World-class global services and support

All BES12 subscriptions come with industry-leading BlackBerry technical support included to help evolve your EMM strategy and manage your complex and demanding environment. You can further tailor your EMM solution with additional relationship-based and technical services.



SECURE WORK SPACE by BLACKBERRY

Secure Work Space by BlackBerry provides employees with fast and easy access to email, calendar, enterprise browsing and more on iOS and Android devices, all while keeping their personal apps and data separate and secure. End users get the business tools they need to be productive and IT gets security they can count on.



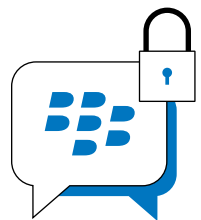
WORKLIFE by BLACKBERRY

With WorkLife by BlackBerry enterprises can easily add a separate corporate phone number to a personal iPhone, Android or BlackBerry smartphone brought in by the employee (BYOD). WorkLife by BlackBerry allows the enterprise to pay for the work line (voice, SMS and data) while allowing employees to keep their personal line for personal use.



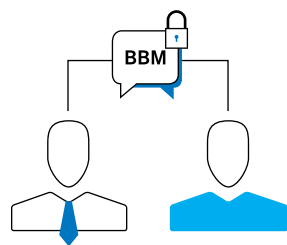
COMMUNICATION AND COLLABORATION

By designing our communication tools with a mobility-first mindset we create new opportunities to boost productivity and connect to the people and things that matter, instantly and securely, from anywhere, without compromise.



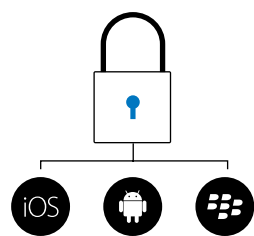
BBM PROTECTED

BBM™ Protected provides an enhanced security model for BBM messages sent between iOS, Android and BlackBerry, bringing regulated industries and highly security conscious organizations the most secure and reliable real-time mobile messaging experience in the industry.



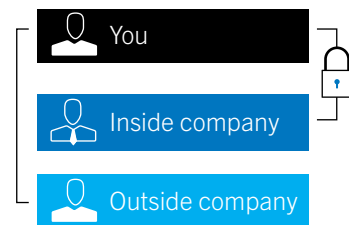
Secure your mobile messaging

Get the speed, reliability and privacy of BBM for faster communication, collaboration and decision making, plus enhanced security over corporate data.



Get end-to-end protection

BBM Protected builds on the proven BlackBerry security model, fully protecting messages across iOS, Android and BlackBerry devices, whether they are on the device or in transit.



Improve employee productivity

Employees use the same BBM app to securely message inside and outside the company.



BBM MEETINGS

BBM Meetings isn't just another collaboration app. It's a whole new way to work smarter and be more productive from any Android, iPhone, BlackBerry® 10 smartphone, Windows PC or Mac.¹



Meet at the touch of a button

Turn any BBM chat, multi-person chat, group chat or BBM Voice call into a live BBM Meeting with the simple touch of a button.



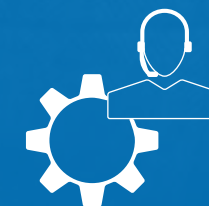
Ring. Answer. Meet.

No more struggling with IDs, passcodes and PINs. When it's time to meet, your phone rings. You answer it, just like a voice call, and you're in the meeting, ready to go.



Present anywhere

BBM Meetings lets any participant show their screen, deliver a presentation, share a document or even annotate – all from their mobile device or desktop.

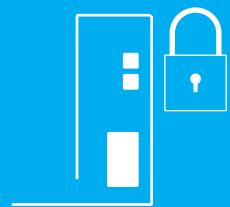


Enjoy better value

BBM Meetings subscriptions come with award-winning BlackBerry Technical Support Services included.

IDENTITY AND ACCESS

Giving employees true mobile freedom, including access to content stored in the cloud, demands a centralized, user-centric approach to identity and access. BlackBerry identity and access solutions simplify access to corporate resources, reduce IT overhead, improve the end-user experience and give IT the tools needed for a controlled, secure environment.



ENTERPRISE IDENTITY by BLACKBERRY

Enterprise Identity by BlackBerry makes it easy for employees to experience the benefits of cloud-based applications using a single set of credentials, while simplifying IT management.

Single point of control for IT

Enterprise Identity by BlackBerry® provides a single point of control and management over your organization's identity and access relationships, across cloud-based apps.

Trust the proven, global infrastructure millions rely on

Enterprise Identity is built on top of a proven identity and access platform that securely manages over 200 million identities and hundreds of millions of identity-based transactions each day.

EMM integration with BES12

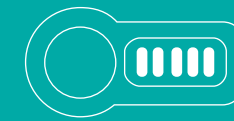
Employees logged into the secured work space of their BES-managed device can access enterprise apps and services, with no additional login required.

One identity. Single sign on.

An employee's identity gives them single sign-on access to cloud based apps, eliminating the need to recall multiple user names and passwords, increasing employee productivity and virtually eliminating password frustration.

Easy to deploy

Enterprise Identity by BlackBerry is standards-based and offers a host of pre-federated services – a cost-effective solution to entitlement and access for all types of users.



VPN AUTHENTICATION by BLACKBERRY

With VPN Authentication by BlackBerry, your iOS, Android or BlackBerry device replaces your expensive OTP hardware solution with Public Key Infrastructure (PKI)-based two-factor security that reduces overall costs. With a touch of your screen, your smartphone allows access to your organization's VPN.

Reduce cost and hassle

VPN Authentication by BlackBerry works with the managed iOS, Android and BlackBerry devices you already have deployed, offering superior value and equivalent or better security. And, by eliminating support required for synchronization problems and PIN resets through the helpdesk, it helps reduce support costs and employee downtime.

Scalable and secure

VPN Authentication by BlackBerry takes a hybrid approach – the security and flexibility of on-premise software combined with modern PKI-based encryption, meeting or improving current authentication. And, you can quickly deploy and securely control VPN access and configuration of user profiles.

Flexible authentication options

Tailor the level of authentication for different user groups. Choose device or Active Directory credentials as the first factor, including when and where they're entered, while one-click acceptance on the smartphone acts as the second factor.

**OUR MOBILE-FIRST
MINDSET ALLOWS
US TO SEE NEW
OPPORTUNITIES. AND
IT ALLOWS COMPANIES
TO BENEFIT IN
WAYS THEY HAVE
YET TO IMAGINE.**

**THIS CAN BE YOUR
MOBILE ENTERPRISE.**

**FOR THOSE WHO
ARE READY, THE
POSSIBILITIES
ARE INFINITE.**





blackberry.com/enterprise

¹ As with all cross-platform software products and services, BlackBerry product and service compatibility are subject to third party hardware and software limitations, requirements and availability. As such, not all BlackBerry products and services will work on all platforms or on all versions within platforms.

Screen images simulated. © 2014 BlackBerry. All rights reserved. BlackBerry®, BBM™ and related trademarks, names and logos are the property of BlackBerry Limited and are registered and/or used in the U.S. and countries around the world. Android and Google Play are trademarks of Google Inc. Apple, the Apple logo and iPhone are trademarks of Apple Inc., registered in the U.S. and other countries. App Store is a service mark of Apple Inc. iOS is a registered trademark of Cisco Systems, Inc. and/or its affiliates in the U.S. and certain other countries. iOS® is used under license by Apple Inc. The Android robot is reproduced or modified from work created and shared by Google and used according to terms described in the Creative Commons 3.0 Attribution License. The iOS is a trademark of Cisco and other countries and used under license by Apple. Windows is a trademark of Microsoft Corporation. None of the above companies sponsor, endorse or have any affiliation with this BlackBerry product.

 **BlackBerry**®