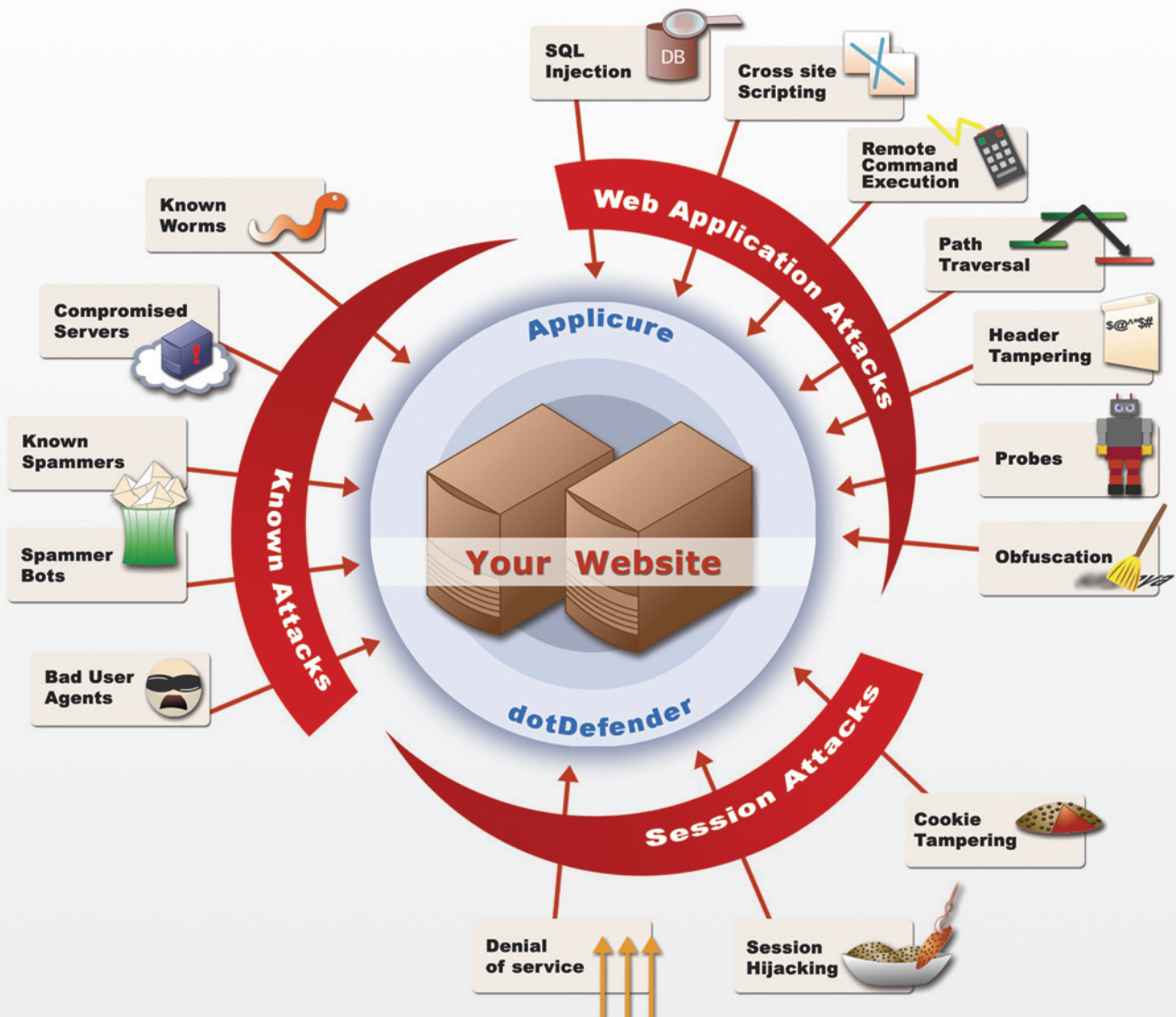




Take a New Look at Application Security

dotDefender™

***How to secure dynamic applications?
How to protect against existing and emerging threats?
How to prevent potentially disastrous insider attacks?***



Websites and intranet applications allow users to access business-critical information and services. To defend these valuable assets, Web applications need advanced protection against hacking and fraud.

Application security protects organizational resources by adding a dedicated security layer to the network security measures (Firewall, IPS/ IDS).

dotDefender™ is a software-based web application firewall installed on Apache, IIS, or Microsoft ISA Server. dotDefender™ provides robust protection against attacks targeting the web application, including SQL Injection, Cross-Site Scripting, Path Traversal, and more.

With dotDefender™ You Can

- Protect websites and intranet applications effectively.
- Secure a variety of platforms using the same product.
- Customize security settings for each website or application.
- Receive automatic security updates against new threats.
- Monitor traffic and view detailed reports about attack attempts.
- Integrate application security with monitoring and management systems.

dotDefender™ Benefits

Effective Security

Strong protection for the critical assets of the organization, either on the website, or in internal applications.

Multi-Platform

Full support for Apache on a variety of Unix/ Linux platforms, IIS and Microsoft ISA servers.

Immediate Protection

Applicure supplies Best Practices security rules, taking effect immediately upon installation. If necessary, flexible customization tools ensure a perfect fit for any environment.

Automatic Update

Applicure provides an automatic update of dotDefender's security rules and signatures, to ensure ongoing protection against emerging threats.

Easy Integration

Rapid installation of the software, central management and simple integration with the organization's monitoring and management systems.

Simple Maintenance

Flexible customization tools, granular protection and live update minimize maintenance effort.

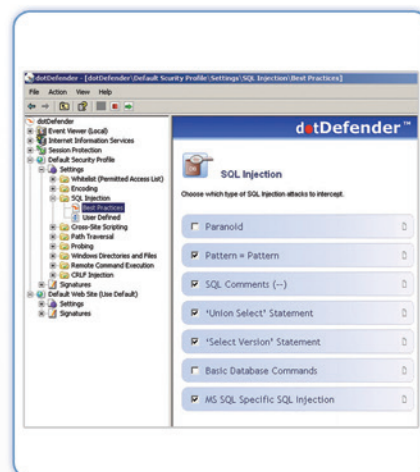
Return on Investment

Effective security, competitive pricing, rapid deployment and simple maintenance make dotDefender the most cost-effective application security product.

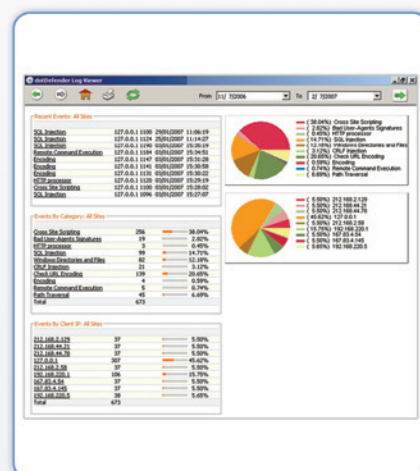
Applicure Technologies Ltd.

Applicure Technologies Ltd creates software-based products for Web application security and database compliance. At Applicure Technologies we believe that security and IT controls have to be cost-effective and efficient so our customers are free to focus on their business goals. The main characteristics of our products are cutting-edge technology, simple roll-out and effortless maintenance – all at an affordable price. IT Week recognized Applicure's achievements and named it one of the Top 100 IT Companies in 2006.

Applicure Technologies, Ltd. 20 Galgaley Haplada Street, POB 12572 Herzeliya Pituach, Israel, 46733
Tel: +972-9-957 9096 Fax: +972-9-957 9098 info@applicure.com www.applicure.com



Flexible protection rules



Statistics about attacks and incidents

