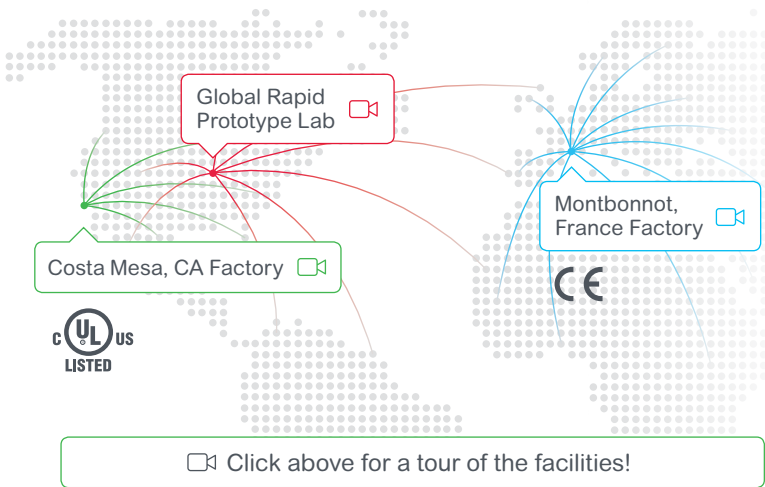




APC Configurable Rack PDUs

Bringing manufacturing closer to home for FASTER lead times with:

- Configure-to-Order style PDU architecture
- Local manufacturing and distribution center in Costa Mesa, California, and Montbonnot, France
 - Serving North America and Europe/International markets
 - Configuring and customizing UL Listed/CE Rack PDUs
- Global Rapid Prototype Lab
 - Rack PDU Design & Technology Center, a dedicated lab in St. Louis, Missouri
 - Component inventory stocked for fast builds
 - Customer samples provided for verification and testing



Factory-Configurable: Pick and Choose Outlets

New architecture takes APC from a standard catalog of hundreds of products to thousands of configurable options! Factory options include outlets, input cord type and length, and color!

Overview

- **Factory-Configurable Family Types:**
Metered by Outlet, Switched, and Switched with Metering by Outlet
- **Voltage:** 200–415V
- **Amp:** 20–60A
- **Outlet capacity:**
Up to 48 outlets – C13s, C19s
- **Mount style:** Vertical

UL LISTED

CE

Input Plug Type

Color

Outlet Modules

Cord Length

Standard Chassis

High-Density Chassis

Pick and choose between 24 or 48 outlets, anywhere you need them!

Contact your Account Representative today for a Configure-to-Order Rack PDU Request!

Factory-configured or new Rack PDU designs to suit unique project requirements

APC™ by Schneider Electric (APC) has sold millions of Rack PDUs. But an off-the-shelf PDU doesn't always fit. Our customization capabilities allow us to help customers truly design their own solution, made just the way they want it.

Our Custom Rack Systems engineering and project management teams and unique factor-configurable PDU architecture streamline customization requests for our customers so they can avoid costly and unsafe field modifications.

Thousands of factory configure-to-order options

Simple factory options, such as input cord modifications, chassis color coding, and outlet layout, limit the need for field modifications and reduce safety issues that can result from modifying power-related products.

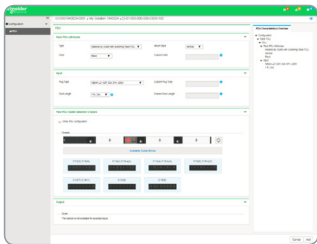
With our new factory-configurable Rack PDU, we provide thousands of options configured-to-order from our factories. Some are ready in as little as 2 weeks with a minimum order of 10!

Completely custom designs

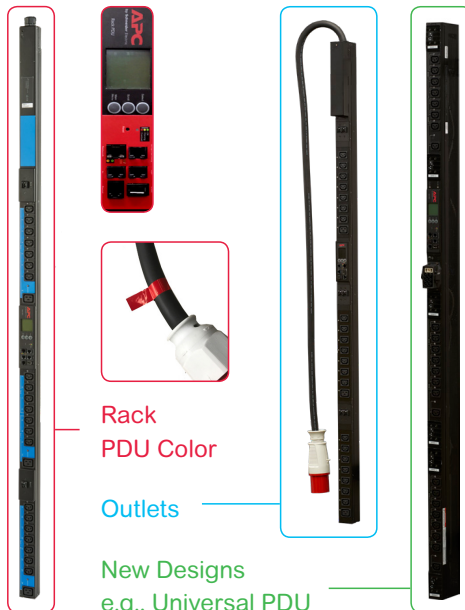
We are also ready to co-engineer a completely new design with you!



Global Rapid Prototype Lab



Schneider Electric
Design Portal - Rack
PDU Configurator



Rack
PDU Color

Outlets

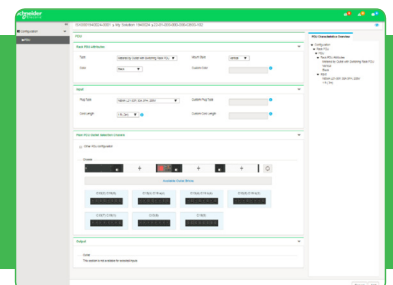
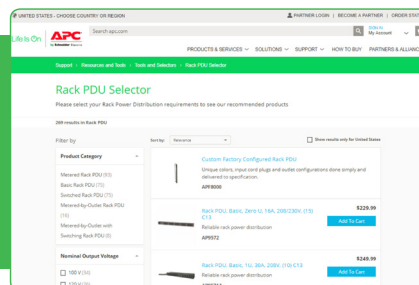
New Designs
e.g., Universal PDU

Addressing unique needs with the service you expect from APC by Schneider Electric:

- Dedicated engineering team to assist from design to delivery
- Competitive pricing model
- Optimized lead times for special orders
- Fast turnaround times for product modifications
- Quick responses to opportunities
- Global manufacturing and supply chain footprint with Schneider Electric

How to Request:

Contact your Account Representative today to design and configure your PDU!



For requests and more details, contact your Account Representative.

Life Is On

