



Email Appliances

Email encryption, data loss prevention and threat protection in a managed appliance

- ▶ Automatically encrypt your sensitive emails without impacting your users
- ▶ Be up and running with effective DLP policies in minutes
- ▶ Keep your inboxes free of spam and threats
- ▶ Choose from hardware or virtual appliances
- ▶ Manage clustered appliances from a single console
- ▶ Set and forget with our managed appliance service
- ▶ Never deal with updates or upgrades again
- ▶ Get support any time
- ▶ Take advantage of our advance replacement warranty if you should need it

Put the money and time you're already spending on anti-spam to an even better use. We give you email encryption, data loss prevention, malware protection and anti-spam in one Email Appliance that's easy to use. And we'll do the remote monitoring to make sure it's always working. You get effective email security that handles your needs whether your traffic is tens, thousands or millions of emails an hour.

What you get

- Protects sensitive data with automatic email encryption
- Reduces the risk of data loss with pre-packaged DLP definitions
- Blocks known and zero-day threats with our proven antivirus engine
- Stops more than 99% of spam—no complex configuration required
- Offers you email encryption, DLP, anti-malware and anti-spam in one license
- Lets you control multiple appliances through a single console
- Guaranteed protection with our remote monitoring of hardware, software, traffic and updates
- Includes automatic upgrades, 24-hour technical support and a three-year, advance replacement hardware warranty

Try it now for free

Register for a free 30-day evaluation at sophos.com.

Sophos Email Appliances

Secure your data—effectively and simply

Sophos Email Appliances make it simple to roll out email encryption and data loss prevention (DLP). You'll have what you need to comply with data protection laws and keep your sensitive data out of the wrong hands:

DLP and encryption policies Deploying and adjusting data protection policies takes only a few clicks. It's fast with our simple interface.

Pre-defined sensitive data types We take the work out of identifying sensitive and personally identifiable information (PII). You get hundreds of pre-packaged data definitions by industry or geography, which our experts provide and maintain.

Automatic data protection Prevent the accidental or malicious loss of sensitive data. Our Email Appliances automatically scan email and attachments for sensitive data and apply policy without the risk of false positives. The bottom line is you don't need to rely on users to protect your data, we make it easy and automatic.

Built in automatic encryption When users need to email sensitive information, SPX Encryption locks the content in password-protected encrypted PDF.

The screenshot shows the configuration interface for a policy rule. At the top, there is a navigation bar with icons for Rule Type, Rule Config, Message Attributes, Select Users, Main Action (selected), Additional Actions, and Rule Description. Below the navigation bar, a message states: "Configure the main action to be taken if a message triggers this policy rule." The "Message actions" section contains a dropdown menu set to "Encrypt the message using SPX" and a description: "The message will be encrypted using SPX." The "Configuration" section includes a "Template" dropdown set to "Sophos Default Template", three checkboxes for "Attach original email to PDF", "Send registration confirmation to sender", and "Always send encryption confirmation to sender" (all are unchecked), and a field "On failure, bounce to" set to "Sender".

Stop malware, spam and more

Our email protection blocks all the threats and stops more than 99% of spam at your mail gateway:

Reputation filtering We eliminate most spam even before our threat detection engine scans incoming email. Our Sender Genotype technology stops spam based on the reputation of the sender, whether the unwanted email comes from a known offender or a new source.

Live protection You also get protection from the latest spam campaigns. Live Anti-Spam uses our cloud service to catch spam in real time and keep it out of people's inboxes.

Proactive threat protection We block new threats at the gateway before they reach your mail servers. With our Behavioral Genotype Protection, you get the best proactive protection from zero-day threats.

Save time with our remotely monitored appliances

While our Email Appliances keep you secure all the time, you won't spend much time on administration:

Remote monitoring We remotely monitor your appliance's vital signs to check that everything is running as it should. If we see something out of the ordinary, we'll alert you before it becomes a problem.

Automated maintenance You'll free up time because we provide automatic updates and automate most routine maintenance tasks.

24-hour technical support Support from our local experts is standard. And your license also includes all automatic updates and upgrades for new software releases.

Get high availability and easy growth

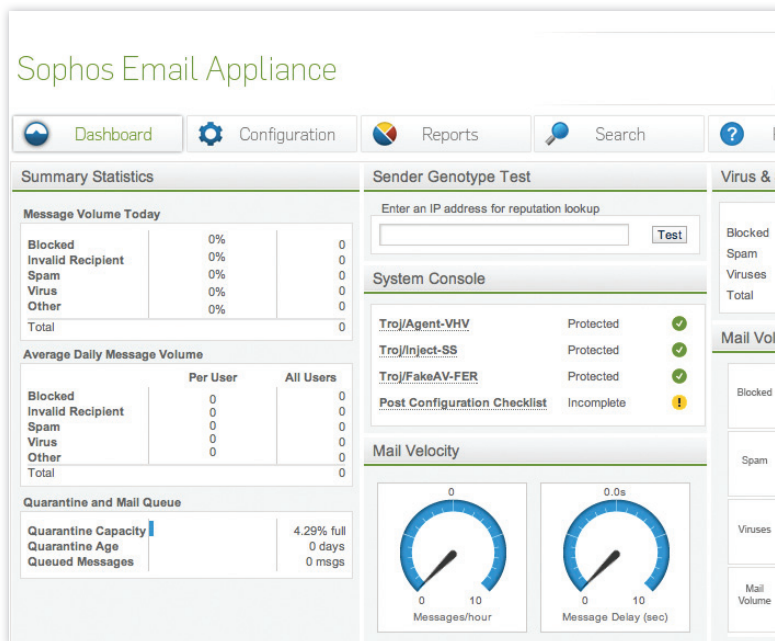
When you want to cluster more than one Email Appliance, you can do it with just one click:

Manage multiple appliances as if they were one Clustering lets you manage many Sophos Email Appliances—hardware, virtual or both—from a single console.

Grow in affordable increments Adding another appliance to your cluster lets you grow easily and affordably.

Hardware or virtual appliances—it doesn't matter. Cluster hardware appliances or virtual appliances in whatever combination best meets your needs.

Web-based management console Our three-clicks-to-anywhere management console gets you to any action you want to perform, fast.





Hardware Profiles	ES100	ES1100	ES5000
Capacity (messages per hour)	95,000	200,000	550,000
Processor	ULV Dual core	Dual core	Quad core
Hard Drive	250 GB SATA	250 GB SATA	160 GB SAS (RAID1) Dual hot-swap
Power Supply	200W 100 - 240V	260W 100 - 240V	Dual hot-swap 920W, 100 - 240V
Dimensions	17.2 x 1.7 x 9.8 in. (427 x 43 x 249 mm)	16.8 x 1.7 x 14.0 in (427 x 43 x 356 mm)	17.0 x 1.7 x 25.6 in (432 x 43 x 650 mm)
Weight	10 lbs/4.5 kg	26 lbs/11.8 kg	45 lbs/20.5 kg

Features

- Live Anti-Spam
- Sender Genotype
- Behavioral Genotype
Anti-malware
- SPX Encryption (optional)
- DLP Engine with pre-packaged intelligence
- Web-based management console and reporting
- System alerting and notification
- 24/7 Support

Installation

1U rack mounted

Regulatory/Safety Certification

UL, CE, FCC, VCCI, C-Tick, TÜV-GS, SABS, RoHS, WEEE

Hardware Warranty

Up to 3-year advance replacement
(software license must be in effect)

Languages Supported

End-user interface and email digest: English, French, German, Italian, Japanese, Spanish, Traditional Chinese, Simplified Chinese and Swedish

Management console: English

Try it now for free

Register for a free 30-day evaluation
at sophos.com.

United Kingdom Sales:
Tel: +44 (0)8447 671131
Email: sales@sophos.com

North American Sales:
Toll Free: 1-866-866-2802
Email: nasales@sophos.com

Boston, USA | Oxford, UK
© Copyright 2011. Sophos Ltd. All rights reserved.
All trademarks are the property of their respective owners.

Sophos Data Sheet 6.11v1.dNA

SOPHOS