

# StruxureWare for Data Centers

## Data Center Infrastructure Management (DCIM) Software



An integrated suite of data center management software applications that enable businesses to prosper by managing their data centers across multiple domains, providing actionable intelligence for an ideal balance of high availability and peak efficiency throughout the entire data center life cycle.

[www.schneider-electric.com/dcim](http://www.schneider-electric.com/dcim)

Life Is On

**Schneider**  
Electric

# Intelligent data center management without the complexity

## The bridge between facilities and IT

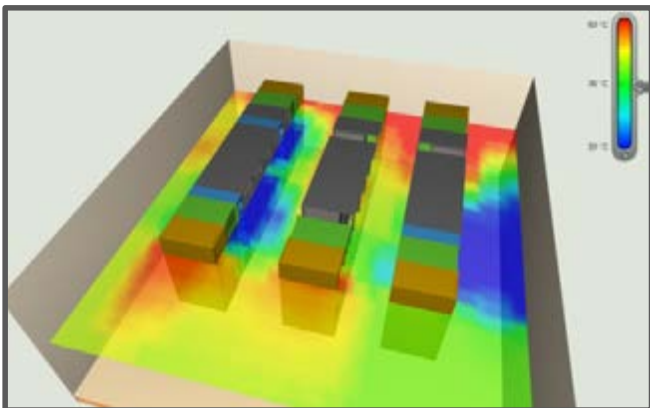
StruxureWare for Data Centers software provides a simple, integrated experience for many users and groups who manage both the facility and IT infrastructure environments, as well as executives who depend on their company's data center to provide business value. Not only does the software suite streamline operational efficiencies, it enables intelligent energy management for real OpEx savings.

StruxureWare for Data Centers software applications are unified across three levels to give the right information to the right users at the right time:

- > **Enterprise level:** C-level executives can drive their corporate and environmental sustainability strategy efficiently, choosing the best scenario that meets their business objective to conserve enterprise-wide resources.
- > **Operations level:** Functional managers can optimize operations, energy, and assets through smart analytical tools and planning capabilities, spanning multiple sites.
- > **Control level:** Experts, on site or remotely, can control process performance and ensure business continuity in real time, while tracking energy consumption

## A closer look at StruxureWare for Data Centers

StruxureWare suites address unique business needs across buildings, industrial plants, and data centers. Each targeted suite delivers seamless integration with third-party offers and legacy systems as well as a scalable platform and consistent user experience.



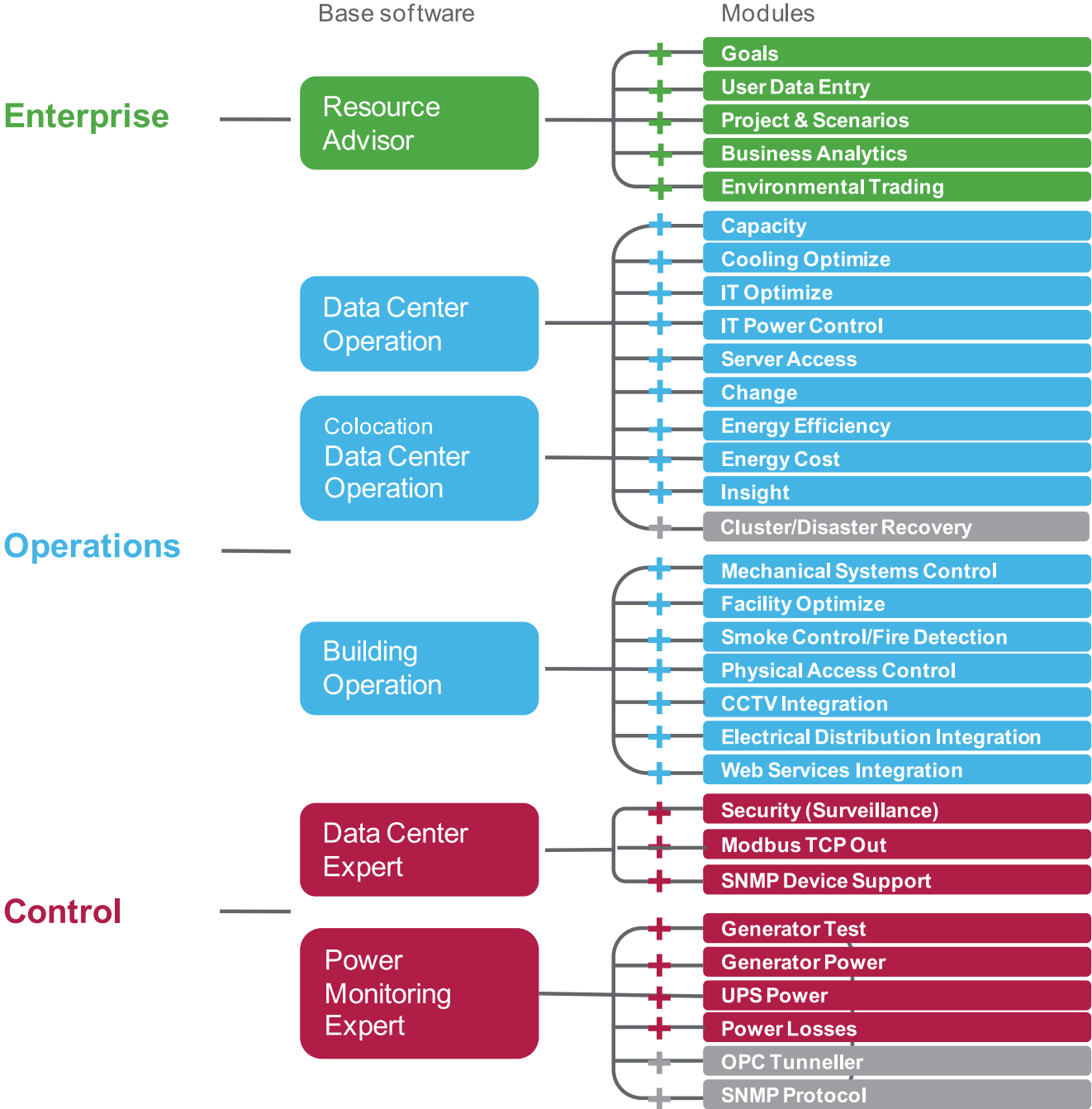
Part of this larger StruxureWare family, StruxureWare for Data Centers software includes applications that deliver the actionable information expert users, facility, and IT teams need to keep the data center operating with an ideal balance of high availability and optimal efficiency. Specifically, it comprises the following applications.

### StruxureWare for Data Centers benefits

- > Adjust the facility's cooling needs when the IT loads change for optimal resource use.
- > Track your carbon and resource use to cut costs.
- > Optimize existing data center physical infrastructure to reduce OpEx and delay future CapEx.
- > Display, monitor, and manage PUE across facilities/IT.
- > Dynamic virtual machine management maximizes application and system availability.
- > Monitor and automate equipment for reduced costs and highest availability.
- > Provide graphical representation of systems for proactive monitoring and management.
- > Instantly calculate recommended IT installation locations for greater agility.
- > Support your business process for space and cage management for multi-tenant facilities.

# StruxureWare for Data Centers Suite

The StruxureWare for Data Centers software architecture is scalable and modular to enable you to tailor the suite to your distinct business needs.





## StruxureWare Resource Advisor

Enterprise energy procurement and sustainability service

### Energy and environmental reporting at your fingertips

This comprehensive Software-as-a-Service (SaaS) platform provides easy access to enterprise-wide energy, carbon, and other resource data, reports, and summaries. Advanced data capture capabilities deliver audit-grade information; customizable dashboards enable at-a-glance performance checks. Manage projects, make decisions, and drive your energy management and sustainability strategies with confidence.

### Audited, verified and accurate data

Resource Advisor combines quality assurance and data capture capabilities into one energy and carbon management solution. Enterprises that depend on audited and verified data that other software or internal spreadsheets can't guarantee will appreciate Resource Advisor's uncompromising approach to data accuracy. Resource Advisor provides secure access to data, reports and summaries to drive your energy and sustainability programs.

### Access your data

Resource Advisor's standard features provide plenty of functionality, but some users require additional customization to meet their specific needs. We work with you to build Resource Advisor to the specifications you prefer. You won't pay for features you won't use, and you'll have the ability to personalize and configure your experience for maximum efficiency.



### Monitor the markets

Schneider Electric's energy analysts model key futures markets and dozens of energy index points across the globe. This analysis and information populates special updates aimed at keeping you well-informed of market opportunity and market risk.

### Know your spend & usage

You and your stakeholders need accurate, timely spend and usage information. Resource Advisor delivers a robust set of tools to help collect, analyze and report on your cost and consumption at the macro or micro level.

### Control your environmental impact

Facing pressure from around the globe to curb emissions and become more efficient by reducing water consumption and waste, companies require accurate and timely environmental reporting. Resource Advisor allows you to establish and track your carbon, water and waste footprints and communicate the results of your reduction efforts to key stakeholders.



## StruxureWare Data Center Operation

A new level of business intelligence for your data center

With its capability of communicating with building, enterprise and network management systems, Data Center Operation optimizes energy and cost efficiencies and aids in short - and long-term planning and provisioning of data center equipment and resources

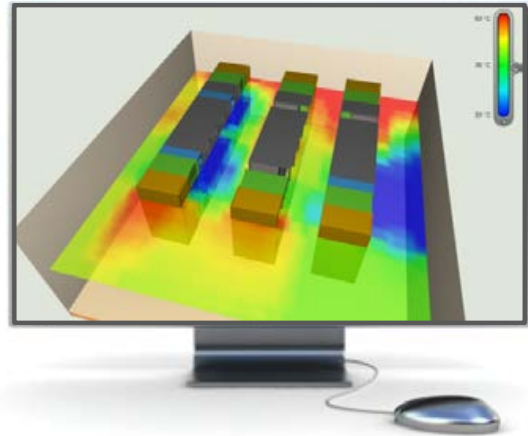
### Make informed data center decisions

With the ability to integrate with both Schneider Electric and third-party equipment throughout the data center physical infrastructure, Data Center Operation bridges the gap between IT and facilities by providing complete visibility for proactive monitoring, streamlined management, and system control down to the server level.

### Supports business planning

This application supports data center business processes and strategic decision-making by allowing stakeholders to manage data center assets, operational costs, and capital costs. It removes historical management silos and helps to create energy awareness across the entire data center physical infrastructure.

This visibility enables informed decision-making from a “building-to-server” perspective, which can be enhanced by product modules and enhancement options to scale to specific user requirements and flexibly meet business needs.



### Analysis, optimization & operations

Data Center Operation enables vendor-agnostic inventory management with real-time device failures and data shown within your data center physical layout, as well as recommendations on how to resolve issues.

- > Extends the lifecycle of the data center through optimization of power, cooling, network and space capacities.
- > Provides dynamic cooling optimization and intelligent control.
- > Reduces IT system energy usage through in-depth optimization of server utilization for increased data center performance
- > Easily track and execute moves, adds, and changes of equipment in the data center through the workflow management tool.
- > Software only server access and power cycling for remote management.
- > Rack-level power capping for an optimized performance of server applications.
- > Intelligent PUE/DCiE analytics at subsystem level.



# StruxureWare Data Center Operation for Colocation

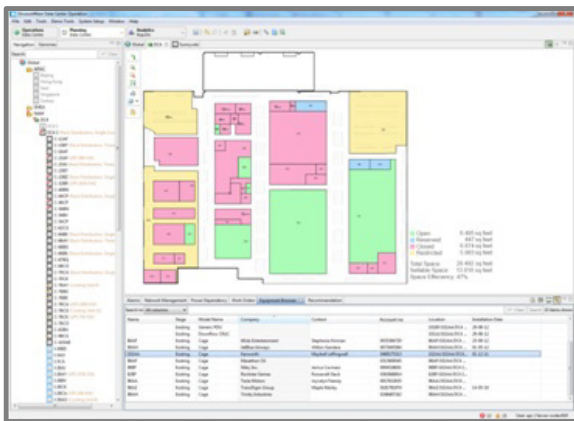
A new level of business intelligence for your data center

## Asset and cage space management for an optimized multi-tenant data center.

Data Center Operation for Colocation enables vendor-agnostic inventory management with real-time device failures and data shown within your data center physical layout, as well as recommendations on how to resolve issues.

### Visualization

Visualize new cages during the pre-sales phase for planning potential new customer cages and supporting the sales process



Data Center Operation for Colocation extends the usage of DCIM tools to the multi-tenant sales process, where it provides instant visualization of space available for selling on to tenants, broken down by used, reserved and available capacity, and identifies how much is required going forward.

This expands the user group of DCIM into the front office of the business - making it a driver for business development.

## Optimizing the multi-tenant data center

Data Center Operation for Colocation transforms the way that multi-tenant providers are doing business by optimizing data center capacities and business processes, which in turn frees up valuable time to focus on developing the business.

> The application provides multi-tenant providers with a real-time status of their current data center capacities, in terms of data center power, cooling & space, and the ability to drill down further and identify any constraints for expansion.

> With cage space management the data center operator can import CAD drawings, apply grid-based naming for floor mount equipment, utilize cage drawing tools and cage power modeling and visualize the solution in 3D.

> Facility maintenance is made easy through a complete audit trail on all facility equipment and cages, the ability to create and track maintenance schedules by equipment and use impact analysis to ensure redundancy is maintained during maintenance.

> The open system integrates tenant billing information into the DCIM system for mapping tenant assets, providing detailed power draw, total energy footprint and access to an instant impact analysis at the tenant level



## StruxureWare Building Operation

A new level of business intelligence for your data center

**Integrated monitoring, control, and management of energy, lighting, fire safety, and HVAC.**

### Save money by converging systems

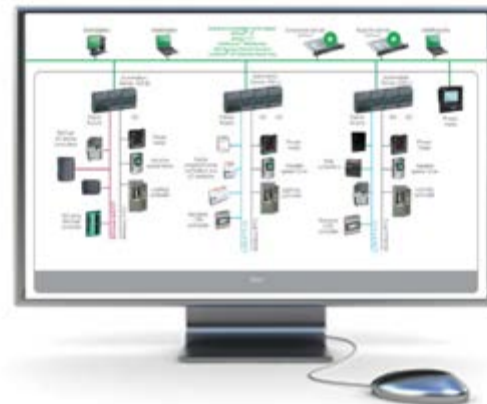
Building Operation will provide intelligent management of your building's systems on one network - across your enterprise. This reduces the need for multiple systems and their associated hardware, software, training, and maintenance costs.

### Protect people, property and investments

Building Operation ensures that your people are comfortable and your buildings are secure. The system immediately responds to any event that falls outside the defined optimum range. Responses include controlling equipment, emailing alarms, or displaying proper procedures to bring the facility back into peak performance. Building Operation is compatible with our existing field devices.

### Making day-to-day operations easy

Building Operation was designed to simplify day to-day operations and provide easy access to system critical information. Alarming, trending, scheduling, and reporting functionality are dramatically easier to use. Your facility managers can focus on optimizing the system, rather than just maintaining it.



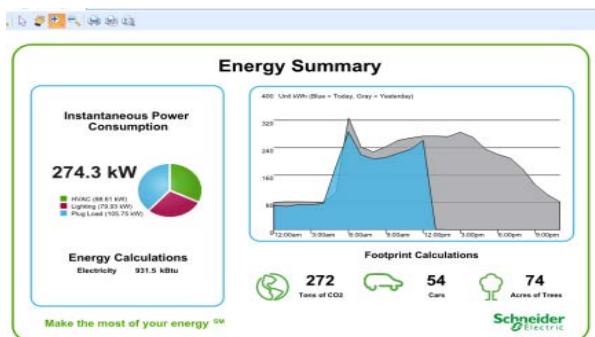
Building Operation software is an integration platform for monitoring, control, and management of energy, lighting, fire safety, security and HVAC. It is a powerful, easy-to-use platform that was engineered to ensure you have the most efficient, safe and effectively managed buildings on the planet.

### Easy to use

Customized workspaces, stunning graphics capability, out-of-the-box functionality and a robust online help community make Building Operation the most user-friendly system on the market. With Building Operation WebStation, you can securely navigate your building management interface, view graphics, reports, trend charts, and manage alarms on-site or from any remote location from a standard web browser.

### Ready for growth

Building Operation unique architecture and modular design ensures that the same robust functionality is available to a single building or a sprawling campus. Building Operation will natively support every major communication standard in building automation and security management, including TCP/IP, LonWorks, BACnet, Modbus and Ethernet. This multi-lingual approach gives you the freedom to connect any equipment and the power to gather and analyze data to maximize operational efficiency.





## StruxureWare Data Center Expert

Centralized monitoring of the physical infrastructure

### Instant fault notification and escalation enable quick resolution of critical infrastructure events.

Whether located in a data center, remote office, or campus environment, Data Center Expert and the Schneider Electric power, cooling, environmental, and security devices combine to provide a comprehensive centralized monitoring solution.

With Data Center Expert power readings, environmental readings and camera images from any site on your network are tied in together into a common management platform. Images and alerts from around the company can be instantly viewed and managed, trends analyzed, and problems averted, providing unparalleled physical threat management.

### Integrated with Power and Building Management

Integrate with Building Operation and Power Monitoring Expert for information on the health of critical support systems in the electrical and mechanical rooms as well as power quality and electrical distribution.

### Web Services API

Ready access to Data Center Expert alerts, data, reports and trending through existing dashboards or create custom portals for financial, operational or other views.

Data Center Expert is easy to use and deploy with a user-friendly interface to monitor, manage and control the hundreds or thousands of devices a company might have from a wide range of manufacturers. These devices include equipment that provides power, cooling, security and environmental monitoring.



### Centralized monitoring & alerts

- > Multi-vendor support for monitoring any networked device from any manufacturer
- > Real-time monitoring and instant fault notification and escalation enable quick resolution of critical infrastructure events.
- > Centralized repository of critical information accessible by multiple users from anywhere on the network.
- > Future trending for bringing new insights into your infrastructure's health, planning and budgeting.
- > Customized alarming and escalation by device, by rack, or by location to the right people at the right time.
- > Open and flexible architecture which expands with changing business needs through additional device licenses, add-on surveillance, operations, and control applications.
- > Full software developer kit (SDK) allows for maximum flexibility through custom integration with other systems.





## StruxureWare Power Monitoring Expert

Advanced power monitoring and power quality analysis

**Specialized and focused power system intelligence for your entire power distribution infrastructure, to help you move beyond business as usual.**

Power Monitoring Expert is a specialized power management system that provides power system intelligence for your entire data center. It enables relevant information sharing and user-to-user collaboration while controlling costs.

With deep insight into the operation of your electrical infrastructure, the system ensures your data center can be operated at the design level of reliability while minimizing energy costs and making the most of your current assets.

Power Monitoring Expert is designed to collect and manage data, helping you optimize your data center's performance. It provides the right combination of data and analysis tools to meet the unique needs of your data center.

### Optimize power loading of equipment

Data center power distribution infrastructure is expensive and maximizing the use of this equipment is critical for minimizing capex. The right information allows facility operations to:

- > Safely maximize the loading of power equipment without compromising reliability.
- > Rebalance phase loading to ensure that the full capacity of the circuit is used.
- > Identify and correct harmonic currents.

### Decrease the duration of unplanned outages

- > Quickly receive critical power system alarms.
- > View the critical alarm history to create an action plan to resolve the issues.



### Decrease the number of unplanned outages

- > Identify and track over-subscribed capacity.
- > Identify redundancy comprised IT branch circuits.
- > Identify power equipment maintenance needs.
- > Perform and document regular power equipment testing.
- > Perform root cause analysis on electrical distribution system events to help reduce the probability of recurrent events.

### Improve the effectiveness of maintenance activities

Ensuring that technicians have accurate information prior to, during, and after a maintenance activity is critical to minimizing technician error. View real-time electrical distribution system data for the complete maintenance cycle.

### Decrease your energy-related OPEX

- > Measure and report on IT branch circuit energy usage for billing purposes.
- > Quantify and track the cost of power losses in the power distribution system.
- > Track power usage effectiveness in real-time and over time.

## Peace-of-mind software services

Schneider Electric™ offers a comprehensive portfolio of services to support and enhance our StruxureWare™ for Data Centers software.

These services are designed to simplify deployment, reduce costs, and address your key concerns and challenges. Our software services provide you with peace of mind that your applications will receive the care they need to operate at optimal levels at all times.

### Software Installation

- Ensures that all software products are installed correctly by a highly skilled field service engineer and are quickly ready for use in your dynamic data center.

### Software Configuration

- Configures the system quickly and precisely to emulate your unique data center, in turn allowing you to make critical decisions that will save you time and money.

### Software Support Contracts

- Ensures you stay up to date with the latest software releases and technical support

### Software Enhancement

- Provides customized dashboards and enhanced reports to meet your business needs.

### Solution Deployment Management

- Provides a single point of contact to oversee the installation, configuration, integration, customization, and enhancement of the DCIM software solution.

### Software Preventive Maintenance

- Grants on-site visits to review, analyze, detect, and prevent system failures while optimizing the use of the DCIM tool.

### Software Integration

- Provides planning, designs, and project management for the integration of StruxureWare for Data Centers software into your existing software or system, providing you with a customized view into your existing applications.

### Software Education

- Offers hands-on training on key features, operational skills, and best practices, enabling you to get the most from your DCIM.



## The Schneider Electric winning recipe for service excellence

### Dedicated Resources

- Worldwide network of certified field service engineers
- Available 24/7
- Allows data center and facilities managers to focus on their day-to-day activities

### Methodology

- Our technical statements of work follow a structured methodology of work procedures that adhere to industry best practices

### Execution

- Deployment management
- Safety is a top priority
- Operation process compliance
- Scheduling

### Tools

- Latest software updates
- Latest firmware updates
- Access to DCIM support
- HW equipment

### Performance

- Fast and efficient service delivery
- Highly trained resources ensure StruxureWare for Data Centers is operating at optimal performance

For more information...

#### Additional resources

##### Visit [white papers.apc.com](http://whitepapers.apc.com)

Read more about the technology and research behind StruxureWare for Data Centers.

> [How Data Center Infrastructure Management Software Improves Planning and Cuts Operational Costs \(#107\)](#).

> [Avoiding Common Pitfalls of Evaluating and Implementing DCIM Solutions \(#170\)](#).

> [Virtualization and Cloud Computing: Optimized Power, Cooling, and Management Maximizes Benefits \(#118\)](#).

> [Guidelines for Specification of Data Center Power Density \(#120\)](#).

> [Allocating Data Center Energy Costs and Carbon to IT Users \(#161\)](#).

> [Estimating a Data Center's Electrical Carbon Footprint \(#66\)](#).

##### View videos

Visit [tv.schneider-electric.com](http://tv.schneider-electric.com) to watch our StruxureWare for Data Centers videos and customer testimonials.

> [www.youtube.com/user/SchneiderCorporate](http://www.youtube.com/user/SchneiderCorporate)

> [tv.schneider-electric.com](http://tv.schneider-electric.com)

##### Read our Blogs

Discussing challenges and trends of DCIM, and inviting you to join in.

> [Blog.schneider-electric.com/datacenter](http://Blog.schneider-electric.com/datacenter)

##### Follow us on Twitter

For updates on all news on StruxureWare for Data Centers.

> [www-twitter.com/StruxureWare\\_DC](http://www-twitter.com/StruxureWare_DC)

##### Need additional information?

Check out our webpages or DCIMsupport for answers to your questions.

> [www.schneider-electric.com/dcim](http://www.schneider-electric.com/dcim)

> [DCIMsupport.apc.com](http://DCIMsupport.apc.com)

Boston ONE Campus  
800 Federal Street  
Andover, MA 01810  
[www.schneider-electric.com](http://www.schneider-electric.com)

Life Is On

**Schneider**  
Electric