

McAfee Asset Manager

Continuous network monitoring for real-time visibility

Increasing volume, pace, and complexity of cyberattacks, highly motivated hackers, and multi-vector tactics mean security management has to move from after-the-fact investigations into real-time situational awareness. The traditional discovery approach of scheduled network scans is a haven for anyone trying to penetrate a company's network. And with the addition of mobile devices and bring-your-own-device (BYOD) programs, organizations are really struggling to maintain visibility and protection of their network. After all, you can't protect what you can't see.

Key Advantages

- Know what you are protecting.
- True device tracking based on media access control (MAC) address.
- Agentless solution providing real-time inventory of all devices and assets on the network.
- Virtual environments mapping.
- Rapid deployment, one-time installation, no agents, and no required infrastructure changes.
- Full integration with McAfee ePolicy Orchestrator (ePO).

Unlike traditional discovery approaches, companies can now uncover hidden devices on their network as well as smart phones, tables, virtual machines, and laptops that come and go between scheduled scans. What you haven't been seeing or detecting will surprise you—and could be jeopardizing regulatory compliance. McAfee® Asset Manager (MAM) software delivers always-on, accurate, and detailed inventory intelligence of all devices attached to a company's network, all in real time.

Know What You Are Protecting

Eliminate the guesswork. McAfee Asset Manager provides total visibility into your network, including managed, unmanaged, physical, and virtual devices. Essential network, device, and user intelligence provides the context needed to eliminate ambiguity and facilitate better decision making based on accurate and in-depth inventory information. Network information is continuously collected in real time to reflect the current state of the network, enabling complete control over the security, management, and compliance status of your enterprise network.

Real-time awareness of all devices on the network

Detect changes to the network and the devices connected to it as they occur. For example, McAfee Asset Manager (MAM) can detect a new device as it is being attached to the network, or match a user ID to the asset it is using as soon as the user authenticates to the network.

End-to-end visibility

McAfee Asset Manager (MAM) is fully integrated with McAfee ePolicy Orchestrator (ePO), the only enterprise-class software to provide unified management of endpoint, network and data

security. This integration allows unmanaged devices to be automatically brought under management utilizing ePO's automated workflows—for example by automatically deploying an agent and associated security controls to a newly discovered unmanaged device.

True device tracking based on a media access control (MAC) address

McAfee Asset Manager (MAM) tracks assets by MAC address, meaning that same asset can be tracked regardless of the IP address or even the underlying operating system itself changing.

Enable user identity discovery

Correlate user identities with specific IP addresses. This enhanced user intelligence improves audit controls, boosts regulatory compliance, and significantly advances incident response by identifying vulnerable or exploited hosts and eliminating manual efforts to track users.

Provide agentless virtualized environments mapping

Discover and track virtualized environments without the use of software-based agents, map between virtual guest devices and the physical system they depend on, and audit the configuration of virtual assets.

Build a comprehensive asset profile

Maintain a comprehensive profile for each device operating on your network. An asset profile may include the following parameters: MAC address, vendor MAC ID, VLAN name and ID, IP address, device type and capability, operating system, patch information, switch and port connections, open network services, user intelligence information (for example, user ID, user name, department, user group, phone number, and email address), installed software and hardware, running processes, switch- and router-related asset information (for example, firmware, software, hardware versions, serial numbers, and physical cards), and more.

Save time with rapid deployment

Generate results in just a few hours. With minimal prerequisites, no physical infrastructure changes, and agentless operation, it is easy and fast to implement and configure McAfee Asset Manager.

Get a fast return on investment

Provide instant, complete, and accurate network, device, and user intelligence, allowing IT professionals to complete tasks both quickly and efficiently.

Request a free trial

Experience the value of McAfee Asset Manager (MAM) to see how your network can be protected, all the time. <http://www.mcafee.com/us/products/asset-manager.aspx>

Learn More

Visit www.mcafee.com, or call us at 1 888 847 8766.

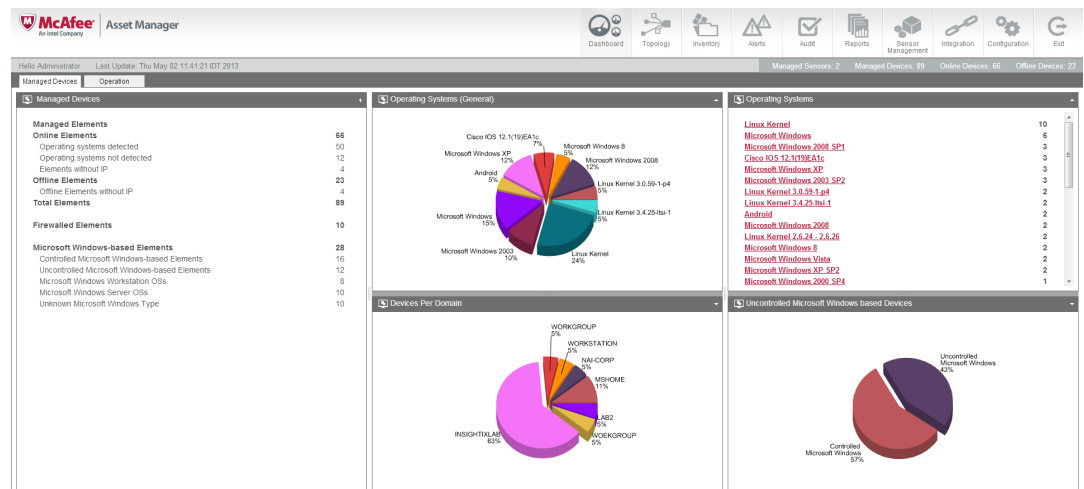


Figure 1. McAfee Asset Manager Console Dashboard.

Site Type	Number of Assets	Minimal CPU Specifications	Minimal RAM Specifications	Minimal Number of Gigabit NICs
Small	Up to 250 (single class C)	Intel Atom (or equivalent)	1 GB	2
Medium	251 to 1000	Intel Celeron (or equivalent)	2 GB	2 to 4 (depending on the number of subnets/VLANs)
Large	1001 to 3000	Intel Xeon with a single CPU and 4 cores (or equivalent)	4 GB	4 (assuming the active interface is connected to a Trunk port)
Extra-Large	More than 3001	Intel Xeon with 2 CPUs and 4 cores each (or equivalent)	4 GB, 8 GB recommended	4 (assuming the active interface is connected to a Trunk port)

Table 1: Minimum hardware configurations for McAfee Asset Manager Sensor deployments.

Deployment Type	Overall Number of Devices	Minimal CPU Specification	Minimal RAM Specification
Small/Medium	Up to 50K	Intel Xeon with a single CPU and 4 cores (or equivalent)	4 GB, 8 GB recommended
Large	50K to 100K	Intel Xeon with 2 CPUs and 4 cores each (or equivalent)	8 GB

Table 2: Minimum hardware configurations for McAfee Asset Manager Console deployments.

