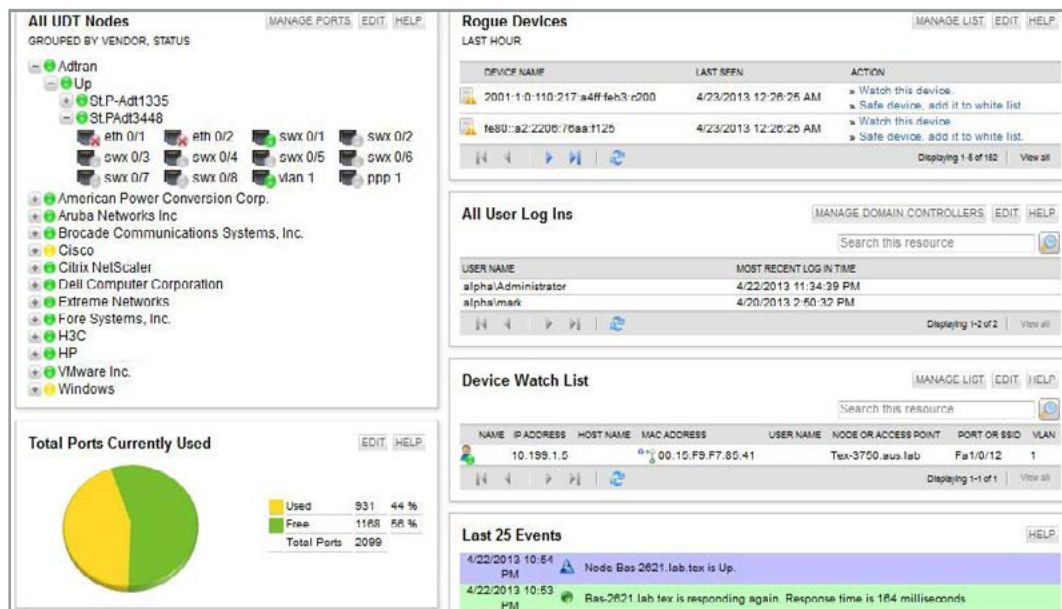


User Device Tracker

AUTOMATED DEVICE TRACKING & SWITCH PORT MANAGEMENT



[DOWNLOAD FREE TRIAL](#)

Fully Functional for 30 Days

SolarWinds User Device Tracker (UDT) delivers automated user and device tracking along with powerful switch port management capabilities so you can stay in control of who and what are connecting to your network.

Quickly find a computer or user, as well as track down lost or rogue devices with a simple search on a user name, IP address, Hostname, or MAC address. And, if the user or device is no longer connected, historical data will show the last known location. You can even perform device whitelisting, as well as create a watch list, and be alerted immediately when a specific user or device connects.

Plus, SolarWinds User Device Tracker lets you take immediate action to shut down a port to mitigate a threat or alleviate a network performance issue. Best of all, you can do it all from an easy-to-use, point-and-click Web interface!

User Device Tracker at a Glance

- Automatically discovers, maps, and monitors switches, ports, and network devices
- Quickly finds devices and retrieves user name, port details, connection history and more
- Enables searching on IP address, user name, hostname or MAC address to track endpoints
- Allows whitelisting and watch lists with automatic alerts and click-of-a-button port shutdown
- Provides detailed switch port usage data, capacity analysis, and built-in reporting

Features

Network Device Tracking

User Device Tracker allows you to quickly find a network device and retrieve the switch name, port, port description, VLAN, virtual routing and forwarding (VRF) data, and more.

Network User Tracking

Easily track the location of a user on the network and retrieve connection information including switch name or access point, port or SSID, connection duration, as well as endpoint connection history.

Map and Monitor Switch Ports

Visually display switches, port status and usage, CPU load, memory used, and more with drill-down configuration details and historical data for in-depth insight.

Network User & Device Watch List

Set up a watch list and be automatically alerted when a specified user or device connects to the network.

Device Whitelisting

Create a whitelist to identify “safe” vs. “rogue” devices and receive an alert when a device not on the whitelist connects.

Automated Switch Port Discovery

Perform automated network discovery with regularly scheduled scans to maintain a real-time, comprehensive list of switches and ports.

Remote Port Shutdown

Shut down a compromised network port directly from the UDT console with the click-of-a-button.

Customizable Network User & Device Reports

Quickly create and automatically distribute user and device reports using customizable, out-of-the-box and community-generated templates.

Intuitive LUCID Web Interface

User Device Tracker simplifies switch port mapping, monitoring, and endpoint tracking with a Web interface that works the way you do and is LUCID (Logical, Usable, Customizable, Interactive, and Drill-down).

Do-It-Yourself Deployment

Download, install, and deploy User Device Tracker in less than an hour, using three simple steps.

System Requirements

HARDWARE	MINIMUM REQUIREMENTS
CPU	Dual processor, 3GHz
Memory	4GB RAM
Hard Drive	20GB free disk space is recommended
SOFTWARE	MINIMUM REQUIREMENTS
OS	Windows® Server 2003, 2008, & 2012 (32-bit or 64-bit) including R2, with IIS installed, running in 32-bit mode
.NET Framework	Version 3.5 SP1 or 4.0
Database	SQL Server® 2005 SP1 Express, Standard, or Enterprise / SQL Server 2008 Express, Standard, or Enterprise, or SQL Server 2008 R2 / SQL Server 2012 Express, Standard, or Enterprise
SNMP Trap Services	Windows operating system management and monitoring tools component
Web Console Browser	Microsoft Internet Explorer® version 6 or higher with Active scripting Firefox® 3.0 or higher (Toolset Integration is not supported on Firefox)

NOTE: The minimum server requirements listed assume default configuration. Significantly increasing the poll rate or statistic collection rate could result in additional load on the server, which may require a larger CPU or additional memory.

Try Before You Buy. Download a Free Trial!

At SolarWinds, we believe you should try our software before you buy. That's why we offer free trials that deliver full product functionality. Simply download and install the software. Then enter a user name, IP address, Hostname, or MAC address, and watch SolarWinds User Device Tracker quickly find the current location of the device. It's just that simple!

 **DOWNLOAD FREE TRIAL**

Fully Functional for 30 Days

About SolarWinds

Founded in 1999, SolarWinds delivers powerful and affordable IT management and monitoring software to over 100,000 customers worldwide – from Global 1000 enterprises to small businesses. Named by Forbes as one of the top 10 fastest growing technology companies, SolarWinds is improving the way IT management software is developed, priced, purchased, delivered, and used. Our IT monitoring and management software is built for SysAdmins and network engineers who need powerful, affordable, and easy-to-use solutions that save time and simply get the job done. Evaluating, buying, deploying, and using enterprise software shouldn't be complex. IT management solutions from SolarWinds are easy to try, buy, deploy and use. That's unexpected simplicity.

Learn More

For product information or to purchase SolarWinds products, visit solarwinds.com, call, or email:

Americas

Phone: 866.530.8100

Fax: 512.857.0125

Email: sales@solarwinds.com

EMEA

Phone: +353 21 5002900

Fax: +353 212 380 232

Email: sales@solarwinds.com

APAC

Tel : +65 6593 7600

Fax : +65 6593 7601

Email: sales@solarwinds.com

3711 South MoPac Expressway | Building Two | Austin, Texas 78746