

## Asset Vision® Registry Data Sheet

### KEY BENEFITS

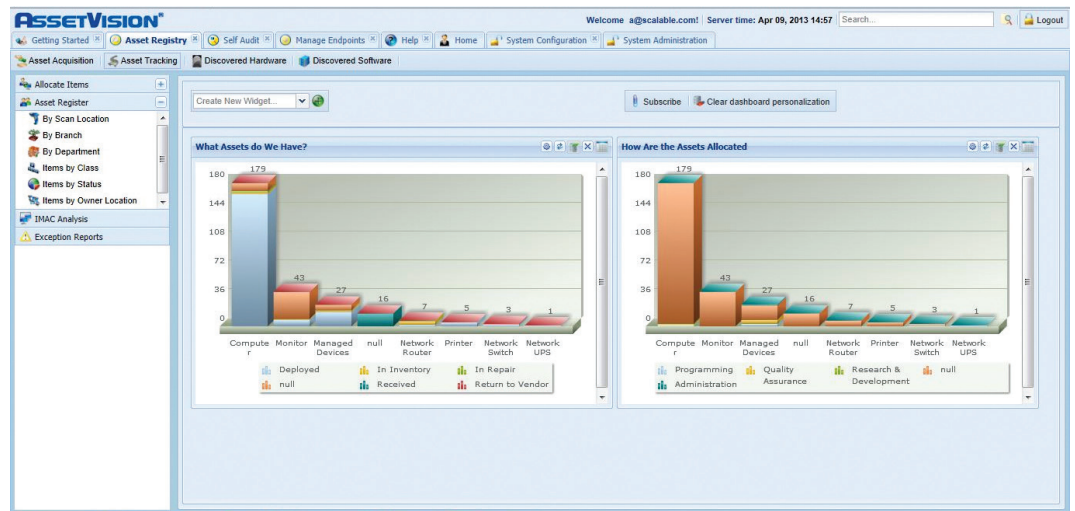
- **Demonstrates value in minutes.** Can be deployed, configured, and running reports in less than 10 minutes.
- **No agents required.** Advanced, innovative discovery techniques enable comprehensive hardware and software data to be gathered without agents, even for devices that never touch the corporate network.
- **Captures off-network devices.** Manual scanning ensures an increasingly mobile workforce—even those workers who never touch the corporate network—remain current in the registry.
- **Normalized and enriched.** Discovered data is enhanced using a comprehensive, Cloud-based and crowdsourced catalog of IT asset data.
- **Highly scalable.** Works across multiple heterogeneous platforms in a single scan, and can successfully operate across large, complex networks without a loss of performance.
- **No infrastructure costs.** Since Asset Vision® Registry is a Cloud-based platform, no infrastructure is required, and a service is always available that is running the latest release.
- **Flexibly priced.** Asset Vision SaaS subscriptions are offered with multi-year options based on a simple pricing model.

## IT Asset Management that delivers like a service, because it *is* a service.

Asset Vision® Registry drives expense out of IT, deploys in minutes, is simple to use, clarifies complexity through powerful visualization tools, and is outcome-driven.

Asset Vision Registry gets to the heart of controlling costs, improving efficiency and supporting your compliance initiatives. It provides comprehensive procurement capture, network discovery for physical and virtual hardware inventory, and software inventory and vulnerability assessment, all through a secure and reliable Cloud infrastructure.

Platform migrations, cost pressures, mergers and acquisitions, defending against software audits, and managing the rapid rise in mobility and BYOD—the IT assets of an organization, and IT itself, have never been in such a state of transformation. Keeping track of who owns what and where is an order of magnitude more difficult than it was just a few years ago. It is past time for IT Asset Management to evolve; Asset Vision was developed to reboot ITAM and meet these challenges.



Asset Vision® Registry provides comprehensive viewing and reporting on all types of inventory and discovered information through an easy-to-use Web interface.

### Redefining IT Asset Management

Traditional ITAM on-premise solutions are difficult to implement, labor-intensive, slow to provide value, poorly integrated, and are enhanced at a glacial pace. The growth of Cloud computing, rich Web-based sources of IT asset data, and the consumerization of IT have raised expectations that IT use tools that are quick to deploy, easy to update and enhance, and are rapidly responsive to change.

Asset Vision® Registry meets these expectations. Its continuous development model, built-in non-invasive discovery, data enrichment algorithms and pre-built integration facilities, come together to deliver reliable, accurate and actionable IT Asset Intelligence with zero infrastructure footprint—*faster than you can imagine*.

## Off-Network Inventory

With internet access, off-network inventory is easily completed through an HTTPS email process. Manual Scan allows an organization to automatically generate an email and send it to one or more users whose machines are not on the organization's network to have them inventoried.

## Normalization Intelligence

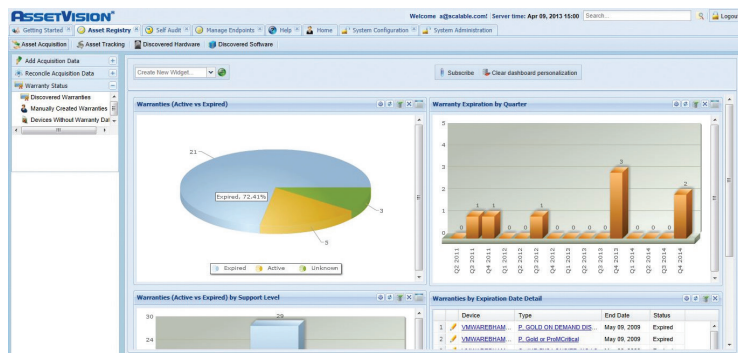
Using mediated and anonymized crowdsourcing techniques in discovery, Asset Vision® Registry injects real meaning into discovered data. Since discovered assets are automatically, correctly, and consistently categorized using an industry-standard taxonomy, Asset Vision Registry users get a significant benefit: freshness and accuracy.

## Dynamic Discovery

User-defined discovery plans allow users to focus on what is required, where and when, even by organizational groupings. As new discovery methods become available, options will be added seamlessly and automatically, via Scalable's agile software development approach.

## Warranty Spider

The Asset Vision Warranty Spider automatically obtains accurate and up-to-date warranty information on desktop and server estates. Warranty information from all major vendors is systematically discovered, cutting hours (and in some cases days) from the time spent reviewing warranty contracts across hundreds of thousands of devices.



Warranty management for desktop and server contracts helps to minimize costs and speed decision making.

*Each service has a varying degree of additional data captured to provide service specific intelligence.*

## About Scalable

Scalable Software, an innovator in IT Asset Management software since 1999, publishes the WinINSTALL suite of products and is the company behind Asset Vision®, a unified Cloud-based ITAM tool. Asset Vision drives expense out of IT, slashing the cost of administering, supporting, and updating traditional on-premise ITAM solutions. Asset Vision's agentless discovery easily populates, reconciles, and normalizes IT assets. Along with its comprehensive Software Asset Management layer, it swiftly enables accurate compliance reporting, reduces waste through application usage analytics, and precisely identifies unused software and features on all types of devices, even in BYOD scenarios. For more information: [www.scalable.com](http://www.scalable.com) or [info@scalable.com](mailto:info@scalable.com).

© 2013 Scalable Software, Inc. All rights reserved. Scalable, the Scalable logo, Asset Vision, WinINSTALL, and Scalable LIVE! are registered trademarks of Scalable Software, Inc. All other marks are the property of their respective owners.

## Powerful Ad-Hoc Modeling and Reporting

Because of the comprehensive data normalization and enrichment functions in Asset Vision Registry, users can create their own data analysis models *without any programming knowledge*. Through an easy-to-use point-and-click interface, reports are created in the user's own customized UI.

## Universal Integration

Asset Vision Registry integrates easily with other IT infrastructure components, such as CMDBs, Service Desks, and Procurement. In addition, purchase information from vendors can be easily imported using pre-defined maps.

## Business Services

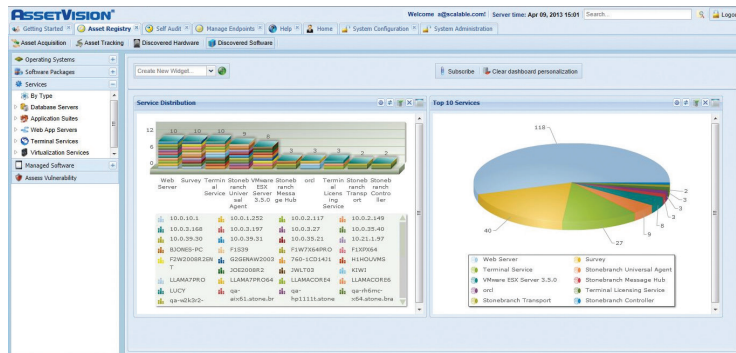
In addition to detection of hardware and software characteristics for each discovered device, Asset Vision Registry can detect the presence of common services on a device-by-device basis. Oracle instances, Terminal Service instances, and VMWare features are just some examples of the services that can be detected.

## Full Procurement Capture

Asset Vision supports a three-way-match best practice by reconciling purchase orders, receiving reports, and invoices. Whether importing Advanced Shipping Notices, importing Purchase Orders from ERP systems, or receiving scan data from the receiving dock, accurate registry data is ensured.

## Vulnerability Analysis

Asset Vision Registry allows users to quickly determine where operational vulnerabilities may exist, and identify those machines that require the most urgent attention. Firewall, antivirus state, and product patch levels are factored into the customizable risk weighting metric, allowing users to quickly focus on high-risk machines.



Microsoft Partner

Gold Independent Software Vendor (ISV)

2013DS00804