

KEY BENEFITS

- **Easy and secure device enrollment.**
- **Mass device deployment.** Secure and efficient distribution of iPads and iPhones.
- **Provides configuration management features.** Passcodes, restrictions on certain applications, Cloud back-up and other access points are supported.
- **Separate corporate apps from BYOD apps.** Support governance and security policies.
- **Protect corporate assets.** Get visibility to potential security breaches.
- **Avoid increased complexity.** Integrates with existing directory systems.
- **Save time.** Automatic deployment of allowed applications.
- **Provides accurate and timely reporting.** Manage cost and compliance through detailed device inventory.
- **Mirrors your corporate structure.** Create, define and manage groups of devices, apps and profiles.
- **Full iOS and OS X device support.** Includes VPP support.
- **No infrastructure costs.** Asset Vision® Manage is Cloud-based, so no infrastructure is required, and a service is always available with the latest release.

Improve workplace mobility and enable client management from the Cloud.

Asset Vision® Manage drives expense out of IT, deploys in minutes, is simple to use, and enables endpoint device management even for out-of-network devices.

With Cloud-based device enrollment, policy-based configuration, and push notifications, Asset Vision Manage supports endpoint device management. Whatever class of endpoint device, whoever owns the devices, wherever and whenever the device is used, IT can manage, configure, support and secure the device—with the agility and lowered TCO of Cloud computing.

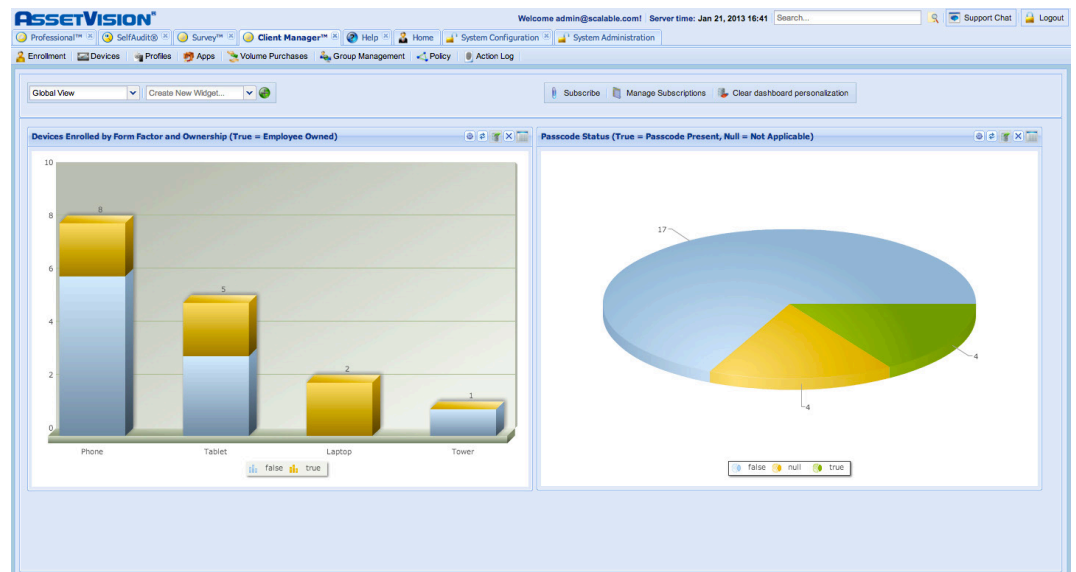
Your workforce considers it normal to use *their* choice of multiple devices, from many locations, at virtually any time in their personal lives; now they expect to do the same on the job. Asset Vision Manage puts you in control without overtly intruding on employees' desire for flexibility and choice. Because it adapts easily, Asset Vision Manage will enable IT to support tomorrow's workforce as well.

Secure from the beginning

With explicit and transparent support for Secure Certificate Exchange Protocol (SCEP), IT professionals who are tasked with managing the upsurge of employees with mobility needs can be assured of a reliable and secure basis for device management.

“53% of information workers have leveraged their own personal devices, installed unsupported software or used unsupported Internet-based services to help them do their jobs.”

- Forrester Research, June 12, 2012



Asset Vision® Manage shows enrolled devices in overview charts, as well as sortable and manageable lists.



Secure Over the Air (OTA) Enrollment

Asset Vision Manage makes device enrollment easy and secure. Device security policies are easily and automatically set based on virtually any device characteristic.

Integrated with Apple Configurator

Enables rapid, mass deployment of iPads and iPhones inside an organization.

Detailed Activity Logging

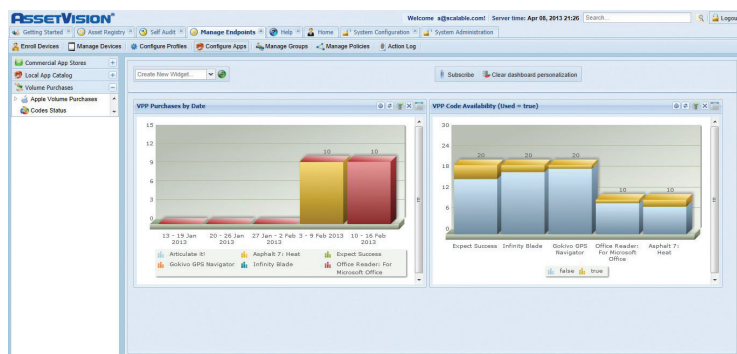
Asset Vision Manage endpoint management facilities' core is a detailed action log listing all activity taken against managed devices.

Automatically and Dynamically Identify Devices in Breach of Policy

Asset Vision Manage continually monitors devices to ensure they are not in breach of policy. If they are, new configurations can be loaded, ensuring access to corporate assets are protected.

Application Deployment and Volume Purchase Program Integration

Asset Vision Manage allows users to build a local library of commercial and custom apps for push or pull deployment. It includes support for the Apple Volume Purchase Program (VPP).



Volume purchases are fully supported.

Create and Manage Device Policies

Develop policies that link groups of apps or configuration profiles with groups of devices. Elect to automatically remediate noncompliant devices to a desired state, or simply warn of noncompliance.

Integrates with Internal Directory Systems

Asset Vision Manage enables organizational structures to be imported and used as the basis for profile and application policy decisions.

Detailed Device Inventory

As part of the enrollment process and periodically thereafter, Asset Vision Manager obtains full device hardware and software characteristics, including installed packages and device configuration.

Define Groups of Devices, Apps, and Profiles

Build dynamic or static groups of devices, apps, or profiles, in order to automate configuration of large numbers of devices. Enables "groups within groups" features to further streamline mass configuration.

Cater to the Needs of Those Who Want Bring Your Own Device (BYOD)

Asset Vision Manage ensures that devices can be selectively wiped. Only corporate email and enterprise applications are controlled, and devices can be returned to pre-enrolled state if an employee leaves.

The screenshot shows the Asset Vision Manage web interface displaying a table of managed devices. The table has columns for 'Last Collected', 'Manufacturer Name', 'Device Name', 'Model Name', 'Model Version', 'Product Name', 'Build Version', 'Operating System', and 'OS Platform'. The table lists several devices, including iPhones and iPads, with their respective details.

Last Collected	Manufacturer Name	Device Name	Model Name	Model Version	Product Name	Build Version	Operating System	OS Platform
Aug 27, 2012 05:28:41	Apple, Inc.	Walmart iPad	iPad	MC001LL	Prod 1.1	9A002	iOS 5.0	iOS
Aug 27, 2012 14:57:37	Apple, Inc.	iPhone	iPhone	MC001LL	iPhone1,1	9A001	iOS 5.0	iOS
Sep 10, 2012 13:37:39	Apple, Inc.	iPad Vero	iPad	MC001LL	Prod 2.2	9A005	iOS 5.0	iOS
Sep 15, 2012 20:20:05	Apple, Inc.	Baby	iPhone	MC001LL	iPhone1,1	9A001	iOS 5.0	iOS
Sep 15, 2012 20:28:25	Apple, Inc.	Mark	iPhone	MC001LL	iPhone1,1	9A001	iOS 5.0	iOS
Sep 30, 2012 17:51:05	Apple, Inc.	Phone	iPhone	MC001LL	iPhone1,1	9A001	iOS 5.0	iOS
Oct 10, 2012 11:05:54	Apple, Inc.	iPhone 5 Connect	iPhone	MC001LL	iPhone1,1	9A001	iOS 5.0	iOS
Oct 04, 2012 02:29:30	Apple, Inc.	Mark's iPhone	iPhone	MC001LL	iPhone1,1	9A001	iOS 5.0	iOS
Oct 05, 2012 01:22:18	Apple, Inc.	Scalable	iPad	MC001LL	Prod 2.2	9A005	iOS 5.0	iOS

Approved applications can be deployed automatically.

About Scalable

Scalable Software, an innovator in IT Asset Management software since 1999, publishes the WinINSTALL suite of products and is the company behind Asset Vision®, a unified Cloud-based ITAM tool. Asset Vision drives expense out of IT, slashing the cost of administering, supporting, and updating traditional on-premise ITAM solutions. Asset Vision's agentless discovery easily populates, reconciles, and normalizes IT assets. Along with its comprehensive Software Asset Management layer, it swiftly enables accurate compliance reporting, reduces waste through application usage analytics, and precisely identifies unused software and features on all types of devices, even in BYOD scenarios. For more information: www.scalable.com or info@scalable.com.

© 2013 Scalable Software, Inc. All rights reserved. Scalable, the Scalable logo, Asset Vision, WinINSTALL, and Scalable LIVE! are registered trademarks of Scalable Software, Inc. All other marks are the property of their respective owners.

2013DS00904



Microsoft Partner

Gold Independent Software Vendor (ISV)