

# Veritas™ Data Insight 5.0

## Actionable intelligence for unstructured data governance

### Overview

The explosion of unstructured data shows no sign of slowing. Analysts predict that the growth of data is 40 percent to 60 percent, but for unstructured data in the enterprise, the growth rate can be up to 80 percent.<sup>1</sup> Despite best efforts and significant investments, organizations lack visibility into ownership and usage of unstructured or dark data. As a result, organizations are struggling to gain control of runaway costs while security and compliance risks are increasing. Gartner estimates that by 2018, 25 percent of organizations will manage all their unstructured data using information governance and storage management policies, up from less than 1 percent today, to improve business value, reduce risk, and lower management cost.<sup>2</sup>

Veritas™ Data Insight helps organizations improve unstructured data governance to reduce costs and risk through actionable intelligence into data ownership, usage, and access controls. The reporting, analytics, and visualization capabilities in Data Insight shine a light on the data by giving organizations an understanding of what data exists, how it is being used, who owns it and has access to it.

### Key benefits

Data Insight offers the following capabilities that improve data governance to reduce costs and risks and achieve compliance:

- **Detailed insights and visibility:** Discover unstructured data and navigate using metadata, age, permissions, usage, and identity context to inform data lifecycle management, compliance, and risk reduction initiatives. Audit all access to data. Review key metrics and create a customizable summary dashboard. Identify and engage data owners to improve data governance.
- **Advanced analysis:** Detect data use policy violations that may indicate anomalous activity or excessive data growth. Analyze collaboration to expose outlier user risk as well as

operational and permissions inconsistencies. Identify and control open shares exposure without impacting information availability. Flexible query interface enables custom reporting, ad-hoc analysis and third party integration through a web-services API.

- **Integrated actions:** Flexible framework to implement custom actions for disposition, migration, and access control efforts including a native connector to Veritas Enterprise Vault™ for archiving and retention management. Drive protection of sensitive data with integration into Symantec™ Data Loss Prevention.

### Increase operations efficiency and reduce costs

Organization can keep up with data growth and become more efficient at data management and reduce overall costs if they had a better understanding of their data and its use. Data Insight helps organizations discover unstructured data and categorize the data by age, type, and owner to guide stale and orphan data cleanup, archiving, and retention efforts. The data ownership and usage capabilities of Data Insight help create consumption reports to promote accountability for efficient data use.

Data Insight further gives visibility into effective permissions including how they were derived to help streamline permissions management.

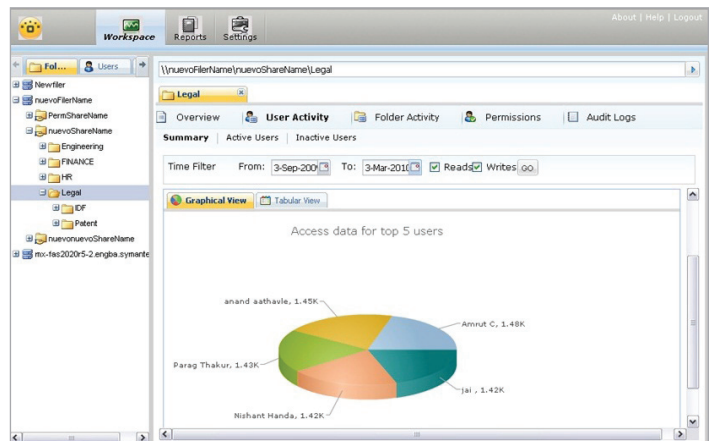


Figure 1. Insight identifies data owners and shows usage patterns.

1. Gartner - IT Market Clock for Storage, 2011, Sept. 6, 2011.

2. Gartner, File Analysis Innovation Delivers an Understanding of Unstructured Dark Data, March 2013.

This solution provides rich visualization of usage patterns such as how data is growing, what data is frequently being used, and who or what process is responsible for the activity. Advanced analytics, such as the interactive ContextMap, can be used to inform data management efforts such as migration, classification, mergers and acquisitions, divestiture, tiering, and capacity planning. The Data Insight query interface enables ad hoc analysis for projects, such as file share remediation, PST clean-up, Microsoft® Active Directory cleanup, chargeback, and other initiatives.

Data Insight enables actionable intelligence by automating the remediation process using Enterprise Vault for archival of data or invoking custom defined actions, such as disposition or migration.

### Protect information from security risks

Protecting unstructured data against loss and misuse is a vital component to a data governance program. With the intuitive web-based interface in Data Insight, organizations understand who is accessing data and how often they are accessing it for security investigations.

The Data Insight data use policy alerts help identify anomalous user activity or irregular activity on sensitive data. Advanced analytics, such as the Social Network Map (Figure 2), enable secure collaboration through outlier user analysis and detection of permissions inconsistencies.

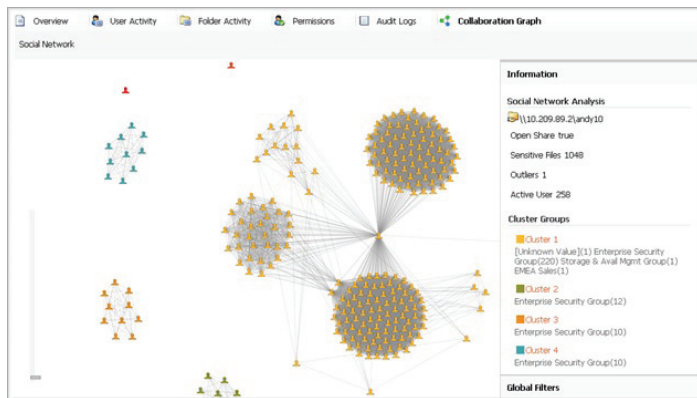


Figure 2. Data Insight's Social Network Map shows collaboration and the business context around data users and their activity.

Data Insight focuses on theft prevention by providing immediate insights into malicious activity and policy violations. User risk analysis aggregates anomalous activity, access patterns, and sensitive content interaction into a single metric. The customizable policies within Data Insight pinpoint which data

is at risk of exposure, such as folders or shares that are open or have overly permissive access rights. It also generates actionable recommendations for tightening permissions and provides change analysis capabilities to lockdown access to business need while controlling open shares exposure without impacting information availability. By having a flexible query interface, Data Insight can enable custom risk analysis and filtering based on data attributes, identity context, access exposure, and activity.

Data Insight integrates with Data Loss Prevention to discover sensitive data, identify data owners, and understand permissions and detailed access history to enable an effective data protection process. Data Loss Prevention can assess which folders are at greatest risk and supports automated user notifications to facilitate data cleanup.

### Achieve compliance

Organizations need to remain compliant on data use and entitlement policies driven by external regulation as well as internal audit.

Data Insight creates a detailed audit trail of who accessed which data and when changes were made to help organizations document confidentiality and integrity of data access for compliance.

Data Insight identifies data owners and custodians that need to be engaged for policy and compliance efforts. Leveraging the data ownership identification and access permissions visibility, Data Insight can automate the process of user access or entitlements review—a requirement for regulatory compliance. Its flexible query interface can be used for business process integration and third party application and workflow support.

Organizations also face challenges complying with data retention guidelines and Data Insight classifies the data based on owners, groups or roles as well as the content as identified by Data Loss Prevention policy and classification. The interactive ContextMap and Data Insight reports help organizations identify data-sets for retention and disposition. Using the flexible remediation framework, organizations can then automatically apply actions using Enterprise Vault archiving or implement custom actions. The combination of Data Insight and Enterprise Vault improves data governance by reducing data management costs, managing retention, and performing targeted discovery of a custodian's data.

## Self-Service portal

Self-service portal enables IT and Risk/Compliance teams to engage business data owners with actionable intelligence to reduce risk of data loss, align access to business need, identify records, and verify ownership.

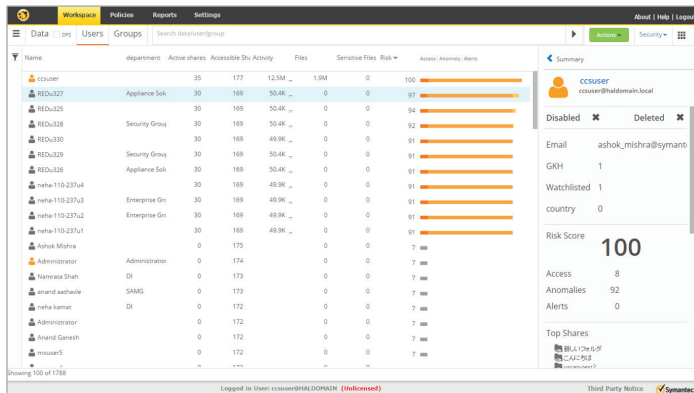


Figure 3. Lists of users with associated risk scores helps recognize potential threats.

## Supported Platforms

- Windows® Server 2003, Enterprise Edition (32-bit) SP2 or higher
- Linux® RHEL 5.5+ (Indexer software only)
- VMware® ESX™ Server 3.5

## Supported data sources

- NetApp DataONTAP® version 7.3.1 or higher
- NetApp Clustered DataONTAP® 8.2 or higher
- EMC Celerra® DART version 5.6.45 or higher
- EMC® Isilon OneFS 7.1 or higher
- Windows® File Server 2003 SP1 or higher, Windows 2008 (64-bit)
- Windows® Server 2012 or higher
- Microsoft SharePoint® 2007, 2010 and 2013
- UNIX® with Symantec™ Storage Foundation 6.0
- Hitachi NAS 12.x
- Box

## More Information

Visit our website

<http://enterprise.symantec.com>

To speak with a Product Specialist in the U.S.

Call toll-free 1 (800) 745 6054

To speak with a Product Specialist outside the U.S.

For specific country offices and contact numbers, please visit our website.

## About Symantec

Symantec Corporation (NASDAQ: SYMC) is an information protection expert that helps people, businesses, and governments seeking the freedom to unlock the opportunities technology brings—anytime, anywhere. Founded in April 1982, Symantec, a Fortune 500 company operating one of the largest global data intelligence networks, has provided leading security, backup, and availability solutions for where vital information is stored, accessed, and shared. The company's more than 20,000 employees reside in more than 50 countries. Ninety-nine percent of Fortune 500 companies are Symantec customers. In fiscal 2014, it recorded revenue of \$6.7 billion. To learn more go to [www.symantec.com](http://www.symantec.com) or connect with Symantec at: [www.go.symantec.com/socialmedia](http://www.go.symantec.com/socialmedia).

## Symantec World Headquarters

350 Ellis St. | Mountain View, CA 94043 USA  
+1 (650) 527 8000 | 1 (800) 721 3934 | [www.symantec.com](http://www.symantec.com)