

## Foglight® for Exchange

Fast detection, diagnosis and resolution of performance issues

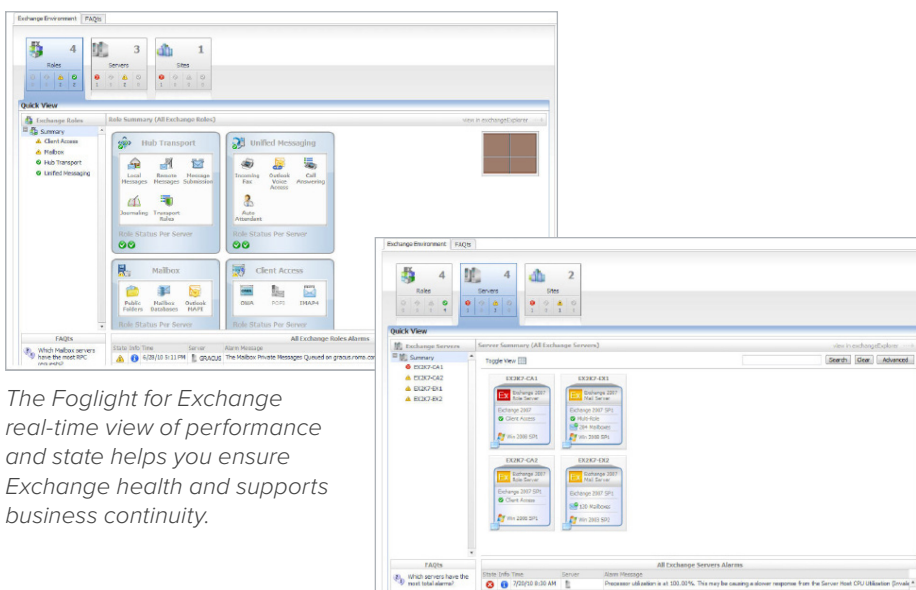
Identifying and understanding the source of performance and availability issues in the Exchange environment is difficult, especially when Exchange resides in a virtual or mixed physical/ virtual environment. Some of the challenges you may encounter include:

- Understanding the relationships and interactions between the application components and the supporting infrastructure
- Detecting, diagnosing and resolving performance and availability problems affecting the Exchange environment
- Communicating state and service quality information to stakeholders without relying on manual, time-consuming and often incomplete processes

Foglight for Exchange provides performance and availability monitoring to help you quickly detect, diagnose and resolve problems affecting the Exchange environment and infrastructure for both virtual and physical environments. It allows you to see the Exchange state and relationships through intuitive graphical displays, including associations to the physical and virtual infrastructure. Out-of-the-box alerts with expert advice also provide valuable insight on the environment which supports fast problem resolution.

### BENEFITS:

- Clear and comprehensive views of Exchange state and relationships, including associations to the physical and virtual infrastructure
- Out-of-the-box alerts and expert advice help you reduce mean-time-to-resolution (MTTR) for incidents
- SLA reports to show you how the Exchange application infrastructure supports the business
- Remote monitoring solution reduces overhead



*The Foglight for Exchange real-time view of performance and state helps you ensure Exchange health and supports business continuity.*

*Foglight for Exchange shows the application's state while drawing attention to problem areas.*

## SYSTEM REQUIREMENTS

### FOGLIGHT MANAGEMENT SERVER

5.5.4.4 or newer, or vFoglight 6.1 (which uses the Foglight Management Server 5.5.4.4)

### OPERATING SYSTEM

The Foglight Agent Manager hosting the Exchange cartridge must be installed on Windows Server 2003sp2 or newer.

Monitored Domain Controllers must be Windows Server 2003 or newer.

### ADDITIONAL SOFTWARE

Microsoft Exchange Server 2007.

Exchange Server 2010 is not supported with this release.

## KEY FEATURES

### Detailed Architectural Representations

Intuitive dashboards draw attention to critical load areas and abnormal flows of data, enabling you to quickly identify problems.

### Dashboard with Logical Views

Dashboard views of Exchange components depict logical representations of each component, or group of components, giving you a view of overall Exchange health and helping you understand relationships between components.

### Perspectives Provide Visibility of Entire Environment

Consolidated views of the whole physical and virtual environment highlight issues and help you to quickly navigate to problem areas.

### Virtualization Awareness

Visual cues identify Exchange components residing on virtual infrastructure, help you troubleshoot issues directly in the virtualization layer.

### Dashboard of Top Consumers

Dashboard views categorize top resource consumers across the entire environment to help you quickly identify load issues for troubleshooting and repair.

### Out-of-the Box Alerts with Expert Advice

Detailed alarms include best practices and incident predictions as well as data on deviations and operational problems to help you speed MTTR.

### Advanced Drill-Down Capabilities

Layers of detail in the dashboard provide answers to frequently asked questions about performance as well as the system environment and capacity, saving you researching time and effort.

### SLA Reporting

SLA performance and availability reports show how the Exchange infrastructure supports the business, giving you an easy way to be accountable to the business.

### Reporting

A unique drag-and-drop graphical report-building tool allows you to easily produce ad hoc and scheduled reports for sharing data with other stakeholders.

### ABOUT QUEST

Quest helps our customers reduce tedious administration tasks so they can focus on the innovation necessary for their businesses to grow. Quest® solutions are scalable, affordable and simple-to-use, and they deliver unmatched efficiency and productivity. Combined with Quest's invitation to the global community to be a part of its innovation, as well as our firm commitment to ensuring customer satisfaction, Quest will continue to accelerate the delivery of the most comprehensive solutions for Azure cloud management, SaaS, security, workforce mobility and data-driven insight.

#### Quest

4 Polaris Way, Aliso Viejo, CA 92656 | [www.quest.com](http://www.quest.com)  
If you are located outside North America, you can find local office information on our Web site.

© 2016 Quest Software, Inc. ALL RIGHTS RESERVED. Quest and the Quest logo are trademarks and registered trademarks of Quest Software Inc. For a complete list of Quest marks, visit [www.quest.com/legal/trademarks.aspx](http://www.quest.com/legal/trademarks.aspx). All other trademarks and registered trademarks are property of their respective owners.  
DataSheet-Foglight4Exchange-US-KS-24074

**Quest**